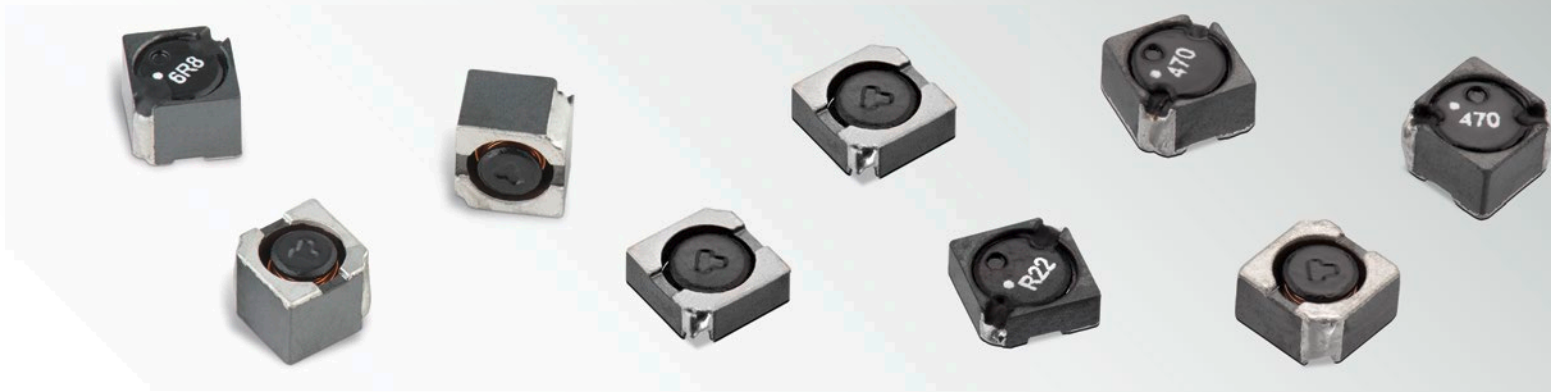




DESIGN KIT

WE-SPC SMD Shielded Power Inductor



SIZE:

4818 / 4828 / 4838

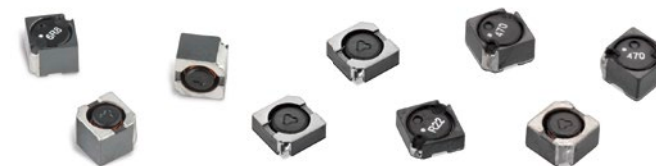
TECHNICAL DATA:

- L: 0.22 ~ 100 μ H
- R_{DC} : 0.014 ~ 1.133 Ω
- I_R : 0.4 ~ 5.3 A
- I_{sat} : 0.68 ~ 13.5 A

Order Code 744 089 4

Version 1.0

WE-SPC SMD Shielded Power Inductor



4818

744 089 410 022

L:	0.22 μH
R _{DC} :	0.015 Ω
I _R :	4.5 A
I _{sat} :	9.5 A

744 089 410 68

L:	6.8 μH
R _{DC} :	0.19 Ω
I _R :	1.1 A
I _{sat} :	2.1 A

744 089 410 068

L:	0.68 μH
R _{DC} :	0.0221 Ω
I _R :	3.4 A
I _{sat} :	6.5 A

744 089 411 00

L:	10 μH
R _{DC} :	0.248 Ω
I _R :	0.9 A
I _{sat} :	1.6 A

744 089 410 10

L:	1.0 μH
R _{DC} :	0.0295 Ω
I _R :	3.0 A
I _{sat} :	5.4 A

744 089 412 20

L:	22 μH
R _{DC} :	0.549 Ω
I _R :	0.65 A
I _{sat} :	1.1 A

744 089 410 22

L:	2.2 μH
R _{DC} :	0.0661 Ω
I _R :	2.1 A
I _{sat} :	3.6 A

744 089 413 30

L:	33 μH
R _{DC} :	1.015 Ω
I _R :	0.45 A
I _{sat} :	0.9 A

744 089 410 35

L:	3.5 μH
R _{DC} :	0.113 Ω
I _R :	1.5 A
I _{sat} :	2.8 A

744 089 414 70

L:	47 μH
R _{DC} :	1.133 Ω
I _R :	0.4 A
I _{sat} :	0.75 A

4828

744 089 420 022

L:	0.22 μH
R _{DC} :	0.0144 Ω
I _R :	5.3 A
I _{sat} :	13.5 A

744 089 420 47

L:	4.7 μH
R _{DC} :	0.103 Ω
I _R :	1.55 A
I _{sat} :	2.9 A

744 089 420 056

L:	0.56 μH
R _{DC} :	0.0184 Ω
I _R :	4.1 A
I _{sat} :	8.3 A

744 089 421 00

L:	10 μH
R _{DC} :	0.148 Ω
I _R :	1.38 A
I _{sat} :	2.1 A

744 089 420 12

L:	1.2 μH
R _{DC} :	0.026 Ω
I _R :	3.2 A
I _{sat} :	5.5 A

744 089 421 50

L:	15 μH
R _{DC} :	0.245 Ω
I _R :	1.1 A
I _{sat} :	1.6 A

744 089 420 22

L:	2.2 μH
R _{DC} :	0.045 Ω
I _R :	2.5 A
I _{sat} :	4.0 A

744 089 422 20

L:	22 μH
R _{DC} :	0.354 Ω
I _R :	0.85 A
I _{sat} :	1.3 A

744 089 420 33

L:	3.3 μH
R _{DC} :	0.057 Ω
I _R :	2.1 A
I _{sat} :	3.5 A

744 089 423 30

L:	33 μH
R _{DC} :	0.5 Ω
I _R :	0.75 A
I _{sat} :	1.1 A

4828

744 089 424 70

L:	47 μH
R _{DC} :	0.608 Ω
I _R :	0.66 A
I _{sat} :	1.0 A

744 089 428 20

L:	82 μH
R _{DC} :	1.11 Ω
I _R :	0.46 A
I _{sat} :	0.68 A

4838

744 089 430 022

L:	0.22 μH
R _{DC} :	0.014 Ω
I _R :	5.0 A
I _{sat} :	13.0 A

744 089 430 056

L:	0.56 μH
R _{DC} :	0.017 Ω
I _R :	3.8 A
I _{sat} :	8.1 A

744 089 430 10

L:	1.0 μH
R _{DC} :	0.022 Ω
I _R :	3.3 A
I _{sat} :	6.5 A

4838

744 089 430 22

L:	2.2 μH
R _{DC} :	0.03 Ω
I _R :	3.0 A
I _{sat} :	4.6 A

744 089 430 33

L:	3.3 μH
R _{DC} :	0.036 Ω
I _R :	2.6 A
I _{sat} :	3.6 A

744 089 430 47

L:	4.7 μH
R _{DC} :	0.052 Ω
I _R :	2.2 A
I _{sat} :	3.2 A

744 089 431 00

L:	10 μH
R _{DC} :	0.094 Ω
I _R :	1.65 A
I _{sat} :	2.1 A

744 089 432 20

L:	22 μH
R _{DC} :	0.213 Ω
I _R :	1.1 A
I _{sat} :	1.4 A

744 089 433 30

L:	33 μH
R _{DC} :	0.259 Ω
I _R :	0.9 A
I _{sat} :	1.2 A

744 089 434 70

L:	47 μH
R _{DC} :	0.351 Ω
I _R :	0.8 A
I _{sat} :	1.05 A

744 089 436 80

L:	68 μH
R _{DC} :	0.7 Ω
I _R :	0.6 A
I _{sat} :	0.85 A

744 089 431 01

L:	100 μH
R _{DC} :	0.85 Ω
I _R :	0.52 A
I _{sat} :	0.77 A

EMC COMPONENTS | **INDUCTORS** | TRANSFORMERS | RF COMPONENTS | CIRCUIT PROTECTION | EMC SHIELDING MATERIAL | LEDs | CONNECTORS | SWITCHES | ASSEMBLY TECHNIQUE | POWER ELEMENTS

Important information: Würth Elektronik's design kits contain reference components. These components correspond with the current product development status on the day of supply. Exchange of the reference components to components with up-to-date product development status is not carried out automatically. No liability is taken for the use of these reference components. Therefore, please request new samples prior to releases for series production and product release.

Please check datasheets on www.we-online.com for specifications. Würth Elektronik eiSos GmbH & Co. KG, EMC & Inductive Solutions. © 2013

www.we-online.com

All products
in stock!

Mouser Electronics

Authorized Distributor

Click to View Pricing, Inventory, Delivery & Lifecycle Information:

[Wurth Elektronik:](#)

[7440894](#)