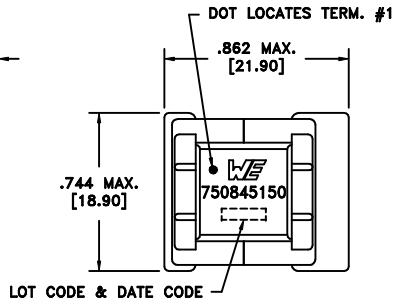
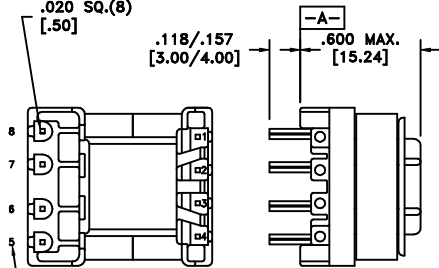


CUSTOMER TERMINAL	RoHS	LEAD(Pb)-FREE
Sn100%	Yes	Yes

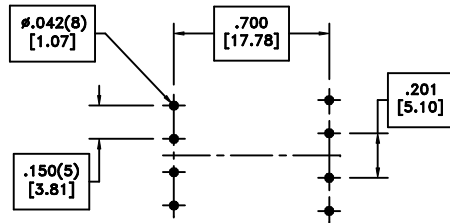
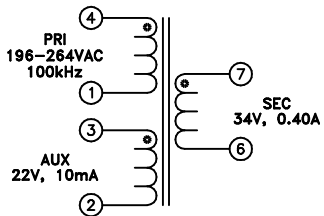
more than you expect



PART MUST INSERT FULLY TO SURFACE A IN RECOMMENDED GRID .020 SQ.(8)



TERM. NO.'s FOR REF. ONLY



RECOMMENDED P.C. PATTERN, COMPONENT SIDE

ELECTRICAL SPECIFICATIONS @ 25°C unless otherwise noted:

PARAMETER	TEST CONDITIONS	VALUE
D.C. RESISTANCE	2-3 @20°C	0.99 ohms max.
D.C. RESISTANCE	4-1 @20°C	8.7 ohms max.
D.C. RESISTANCE	6-7 @20°C	0.18 ohms max.
INDUCTANCE	4-1 100kHz, 100mVAC, Ls	2.70mH ±10%
LEAKAGE INDUCTANCE	4-1 tie(3+2, 7+6), 100kHz, 100mVAC, Ls	30uH max.
DIELECTRIC	1-7 tie(1+2), 3750VAC, 1 second	3000VAC, 1 minute
DIELECTRIC	1-2 1875VAC, 1 second	1500VAC, 1 minute
TURNS RATIO	(4-1):(3-2)	11.4:1, ±2%
TURNS RATIO	(4-1):(7-6)	7.6:1, ±2%

GENERAL SPECIFICATIONS:

OPERATING TEMPERATURE RANGE: -40°C to +125°C including temp rise.

Wire insulation & RoHS status not affected by wire color.
Wire insulation color may vary depending on availability.

REV.	DATE	Packaging Specifications Method: Tray PKG-0735 www.we-online.com/midcom		Tolerances unless otherwise specified: Angles: ±1° Decimals: ±.005 [.13] Fractions: ±1/64 Footprint: ±.001 [.03]	DRAWING TITLE TRANSFORMER	PART NO. 750845150
6A	4/12	SEE REVISION SHEET FOR REVISION LEVEL	CONVENTION PLACEMENT	This drawing is dual dimensioned. Dimensions in brackets are in millimeters.	eiSos p/n: 750845150	compliant RoHS SPECIFICATION SHEET 1 OF 1

Mouser Electronics

Authorized Distributor

Click to View Pricing, Inventory, Delivery & Lifecycle Information:

[Wurth Elektronik:](#)

[750845150](#)