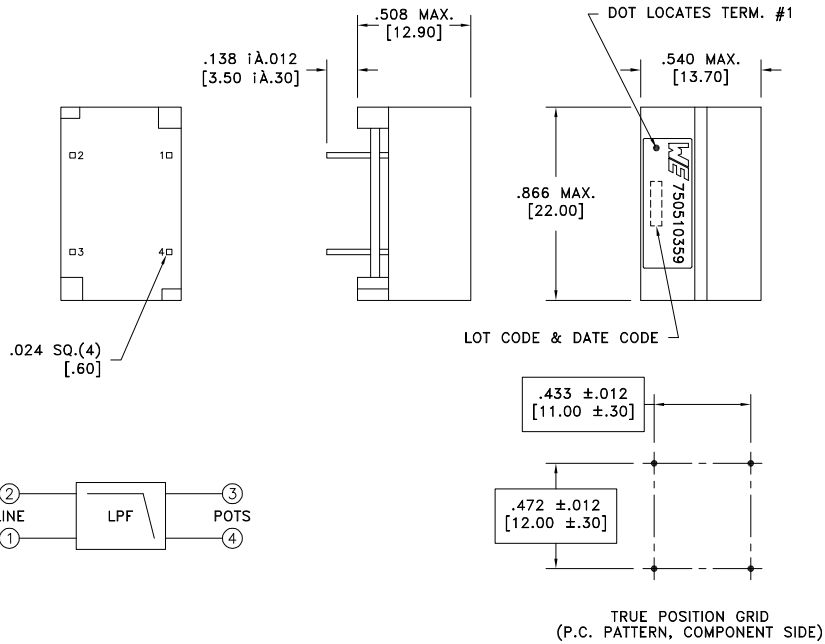


CUSTOMER TERMINAL	RoHS	LEAD(Pb)-FREE
Sn96.5, Ag3%, Cu0.5%	Yes	Yes

more than you expect



6C ELECTRICAL SPECIFICATIONS:

PARAMETER	TEST CONDITIONS	VALUE
D.C. RESISTANCE	@20°C	25 ohms max.
LONGITUDINAL BALANCE	0.2 - 3.0kHz	-58dB max.
FREQUENCY RESPONSE	0.2 - 4.0kHz	±1.5dB
INSERTION LOSS	1004Hz, CO	-0.75dB max.
INSERTION LOSS	1004Hz, CPE	-0.6dB max.
6B RETURN LOSS	200Hz	5dB min.
6B RETURN LOSS	1kHz	8dB min.
6B RETURN LOSS	2.2kHz	5dB min.
LINE IMPEDANCE	0.2 - 4kHz, CO	900 ohms
LINE IMPEDANCE	0.2 - 4kHz, CPE	600 ohms
STOP BAND ATTENUATION	30k - 300kHz	-65dB min.
STOP BAND ATTENUATION	300k - 30MHz	-55dB min.
GROUP DELAY	0.6 - 3.2kHz	200uS max.
GROUP DELAY	3.2 - 4.0kHz	250uS max.
NEAR-END CROSSTALK	1kHz - 30MHz	-65dB max.

GENERAL SPECIFICATIONS:

6C OPERATING TEMPERATURE RANGE: -40°C to +85°C.

LOOP CURRENT: 100mADC

DETAILS SUBJECT TO CHANGE

REV.	DATE	Packaging Specifications Method:		Tolerances unless otherwise specified: Angles: ±1° Fractions: ±1/64 Decimals: ±.005 [.13] Footprint: ±.001 [.03]	DRAWING TITLE	PART NO.	
6C	4/12	www.we-online.com/midcom		This drawing is dual dimensioned. Dimensions in brackets are in millimeters.	DSL MODULE ANSI	750510359	
6B	6/11				eiSos p/n: 750510359	compliant RoHS	SPECIFICATION SHEET 1 OF 1
6A	5/11	SEE REVISION SHEET FOR REVISION LEVEL					

Mouser Electronics

Authorized Distributor

Click to View Pricing, Inventory, Delivery & Lifecycle Information:

[Wurth Elektronik:](#)

[750510359](#)