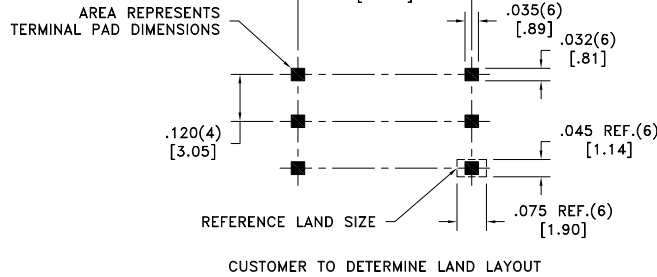
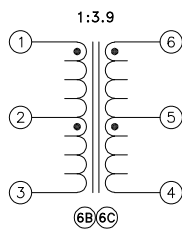
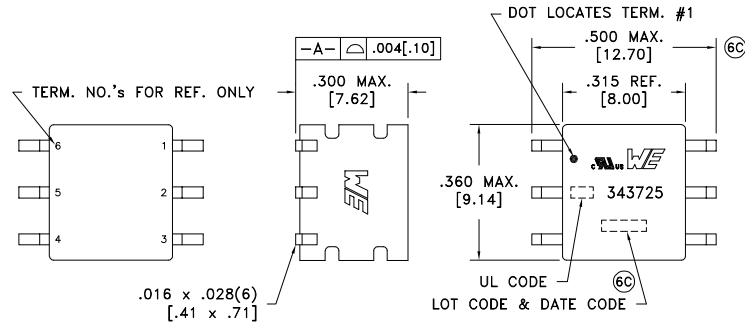


CUSTOMER TERMINAL	RoHS	LEAD(Pb)-FREE
Sn96%, Ag4%	Yes	Yes



ELECTRICAL SPECIFICATIONS @ 25°C unless otherwise noted:

PARAMETER	TEST CONDITIONS	VALUE
D.C. RESISTANCE	1-3 @20°C	0.355 ohms max.
D.C. RESISTANCE	6-4 @20°C	0.87 ohms max.
INDUCTANCE	1-3 100kHz, 10mVAC, Ls	250uH min.
DIELECTRIC	1-6 6250 Vrms, 1 second	5000 Vrms, 1 minute
URNS RATIO	(6-4):(1-3)	3.9:1, ±2%



- ⑥C GENERAL SPECIFICATIONS:  
OPERATING TEMPERATURE RANGE: -40°C to +125°C including temp rise.
- ⑥E⑥C Current Rating: 50mAAC
- ⑥D⑥C Voltage Time: 9VuS
- ⑥C Designed to comply with the following requirements as defined by IEC60601-1(ed); am1:  
- Providing two means of Patient Protection up to working voltage of 250VAC.
- ⑥C 8mm min. creepage & clearance distance between PRI & SEC.
- ⑥C Designed to comply with the following requirements as defined by IEC60950-1, EN60950-1, UL60950-1/CSA60950-1 and AS/NZS60950.1:  
- Reinforced insulation for a primary circuit at a working voltage of 250VAC, Overvoltage Category II, Pollution Degree 2, up to 2km above sea level.
- ⑥C Designed to comply with the following requirements as defined by IEC60664-1,  
- Reinforced insulation for a primary circuit at a working voltage of 400VAC up to 2km above sea level.
- ⑥E Qualified to AEC-Q200.

Wire insulation & RoHS status not affected by wire color.  
Wire insulation color may vary depending on availability.

AGENCY NUMBER	
UL CODE FILE# E205930	SN
UL CODE FILE# E358628	SN

REV.	DATE	Packaging Specifications	CONVENTION PLACEMENT
6E	6/21	Method: Tape & Reel	
6D	8/19	PKG-0948	
6C	6/19	www.we-online.com/midcom	
6B	5/18	SEE REVISION SHEET FOR REVISION LEVEL	

Tolerances unless otherwise specified:  
Angles: ±1°      Decimals: ±.005 [.13]  
Fractions: ±1/64      Footprint: ±.005 [.13]

This drawing is dual dimensioned. Dimensions in brackets are in millimeters.

DRAWING TITLE  
**TRANSFORMER**

eiSos p/n: 750343725

PART NO.  
**750343725**

SPECIFICATION SHEET 1 OF 1



# Mouser Electronics

Authorized Distributor

Click to View Pricing, Inventory, Delivery & Lifecycle Information:

[Wurth Elektronik:](#)

[750343725](#)