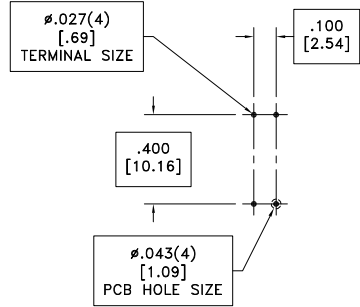
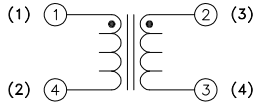
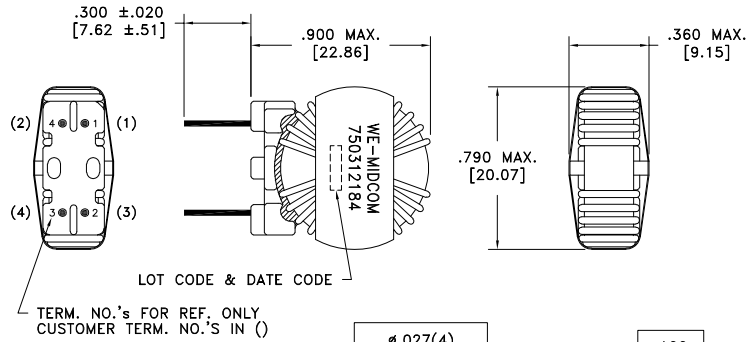


CUSTOMER TERMINAL	RoHS	LEAD(Pb)-FREE
Sn96%, Ag4%	Yes	Yes



ELECTRICAL SPECIFICATIONS @ 25°C unless otherwise noted:

PARAMETER	TEST CONDITIONS	VALUE
D.C. RESISTANCE	1-4 @20°C	34 mOhms max.
D.C. RESISTANCE	2-3 @20°C	34 mOhms max.
INDUCTANCE	1-4 1kHz, 100mVAC, Ls	4.00mH ±32%
INDUCTANCE	2-3 1kHz, 100mVAC, Ls	4.00mH ±32%
LEAKAGE INDUCTANCE	tie(2+3), 10kHz, 100mVAC, Ls	21.85uH max.
DIELECTRIC	1600VAC, 1 second	-
TURNS RATIO	(1-4):(2-3)	1:1, ±1%



RECOMMENDED P.C. PATTERN, COMPONENT SIDE

GENERAL SPECIFICATIONS:

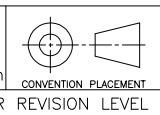
OPERATING TEMPERATURE RANGE: -40°C to +125°C including temp rise.

CURRENT RATING: 2A

Wire insulation & RoHS status not affected by wire color.
Wire insulation color may vary depending on availability.

DETAILS SUBJECT TO CHANGE

REV.	DATE	Packaging Specifications
		Method: Tray
		PKG-0058
		www.we-online.com/midcom
6B	6/20	
6A	5/11	SEE REVISION SHEET FOR REVISION LEVEL



Tolerances unless otherwise specified:
Angles: ±1° Decimals: ±.005 [.13]
Fractions: ±1/64 Footprint: ±.001 [.03]

This drawing is dual dimensioned. Dimensions in brackets are in millimeters.

DRAWING TITLE
INDUCTOR
COMMON MODE CHOKE
eiSos p/n: 750312184

PART NO.
750312184

compliant RoHS
SPECIFICATION SHEET 1 OF 1

Mouser Electronics

Authorized Distributor

Click to View Pricing, Inventory, Delivery & Lifecycle Information:

[Wurth Elektronik:](#)

[750312184](#)