

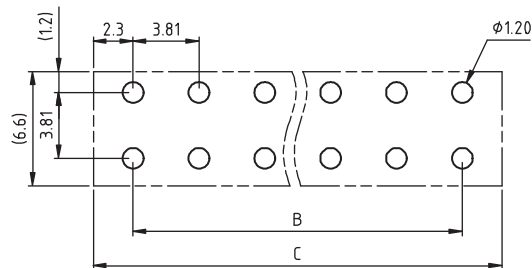
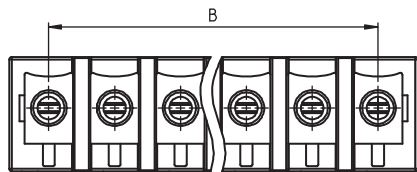
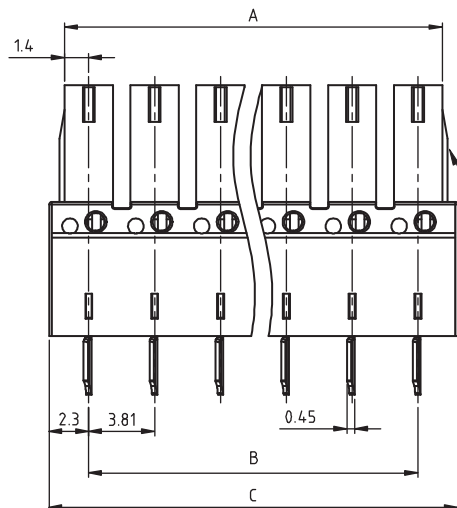
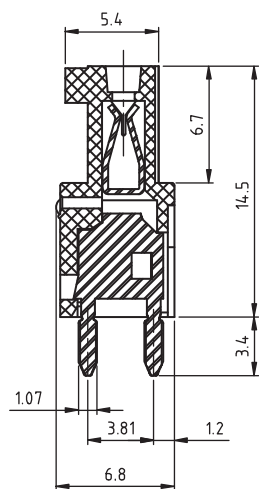
1

2

3

4

5



RECOMMENDED PCB LAYOUT - COMPONENT VIEW

2P to 6P with wedge,  
above 7P without wedge.

## TECHNICAL CHARACTERISTICS

MATERIAL  
INSULATOR: PA 66  
FLAMMABILITY RATING: UL94-V0  
COLOR: GREEN  
CONTACT MATERIAL: COPPER ALLOY  
CONTACT PLATING: TIN  
CONTACT TYPE: STAMPED

ENVIRONMENTAL  
OPERATING TEMPERATURE: -40 UP TO 115°C  
COMPLIANCE: LEAD FREE AND ROHS

ELECTRICAL  
CURRENT RATING: 8A  
WORKING VOLTAGE: 300VAC  
WITHSTANDING VOLTAGE: 1.6KV  
CONTACT RESISTANCE: 20 mOhm max

STANDARD  
ULus CERTIFIED E315414

PITCH: 3.81 MM

SOLDERING  
JEDEC LEAD FREE WAVE SOLDERING PROCESS

PACKAGING  
BOX

DIMENSION  
A = 3.81 x (NB PINS -1) +2.8  
B = 3.81 x (NB PINS -1)  
C = (3.81 x NB PINS) +0.79

RoHS Compliant

G			
F			
E			
D			
C			
B			
A	11-JUN-15	PDF	AK
REV	DATE	FILE	BY

PROJECTION:



APPROVAL: FBr

GENERAL TOLERANCE

.X =  $\pm 0.2$ .XX =  $\pm 0.15$ 

UNIT: MM

SCALE:

SHEET: 1/2

DRAW: AK

DESCRIPTION: SERIE 3073 - 3.81 MM REVERSED PCB VERTICAL

WERI PART NO: 691 307 300 0xx

SIZE

A4

1

2

3

4

5

## Cautions and Warnings:

This electronic component is designed and developed with the intention for use in general electronics equipments.

Before incorporating the components into any equipments in the field such as aerospace, aviation, nuclear control, submarine, transportation, (automotive control, train control, ship control), transportation signal, disaster prevention, medical, public information network etc. where higher safety and reliability are especially required or if there is possibility of direct damage or injury to human body, Würth Elektronik must be asked for a written approval.

In addition, even electronic component in general electronic equipments, when used in electrical circuits that require high safety, reliability functions or performance, the sufficient reliability evaluation-check for the safety must be performed before by the user before usage.

A

B

C

RoHS Compliant

G				PROJECTION: 	GENERAL TOLERANCE .X = +/- 0.2 .XX = +/- 0.15			
F								
E								
D								
C				APPROVAL: JC	UNIT: MM	DESCRIPTION: DISCLAIMER	SIZE	
B					SCALE:			
A	10-SEP-14	PDF	QL		SHEET: 2/2	WERI PART NO: DISCLAIMER		A4
REV	DATE	FILE	BY		DRAW: QL			

D

# Mouser Electronics

Authorized Distributor

Click to View Pricing, Inventory, Delivery & Lifecycle Information:

[Wurth Elektronik:](#)

[691307300012](#)