

Feature -

DPDT  
on-on function

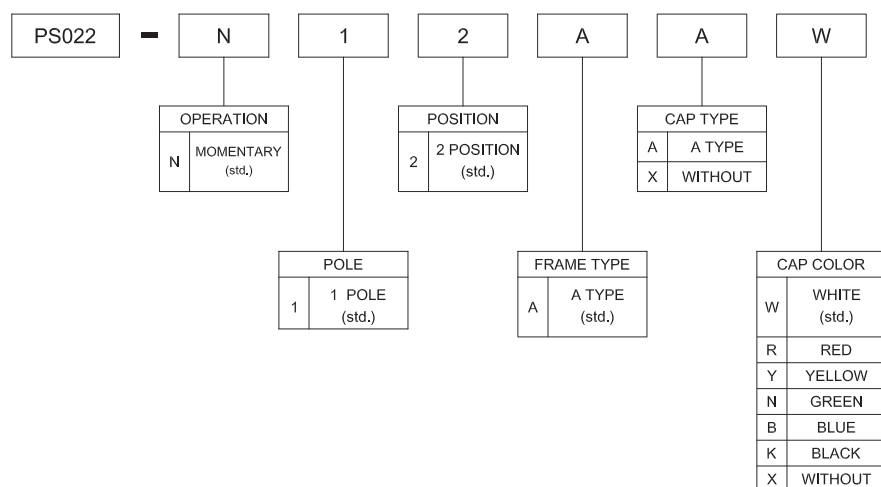
Application -

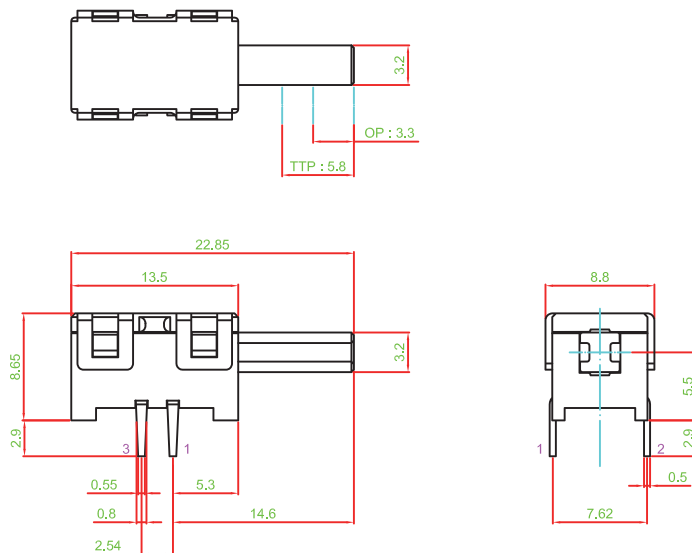
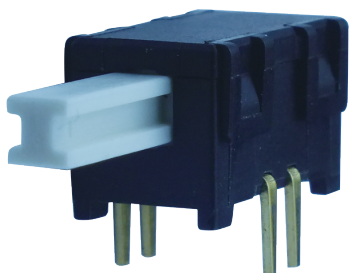
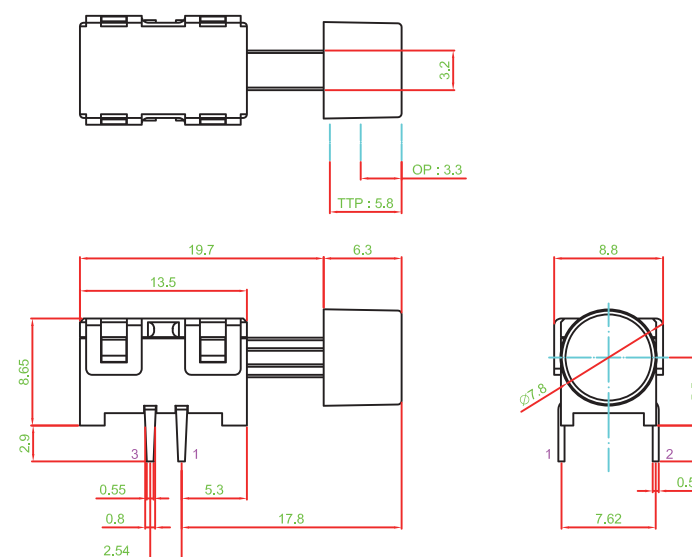
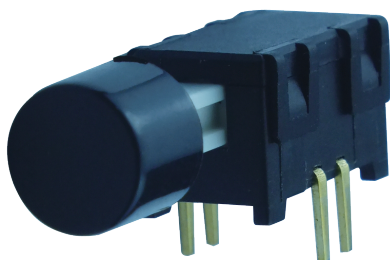
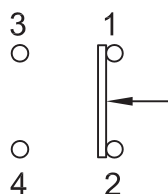
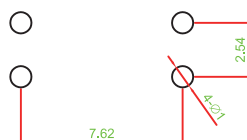
consumer products  
computer products  
instrumentation  
communication equipments

► SPECIFICATIONS

SWITCH SPECIFICATIONS	
POLE - POSITION	1P2T , Momentary
CONTACT RATING	36 V DC , 0.2 A
CONTACT RESISTANCE	40 mΩ MAX. 1.5 V DC ; 100 mA , by Method of Voltage DROP
INSULATION RESISTANCE	100 MΩ MIN. 500 V DC
DIELECTRIC STRENGTH	Breakdown is not Allowable 500 V DC for 1 Minute
OPERATING FORCE	300 ± 100gf
OPERATING LIFE	1,000,000 cycles
OPERATING TEMPERATURE RANGE	-20°C ~ 70°C
TOTAL TRAVEL	5.8 ± 0.3 mm

► HOW TO ORDER



**► DIMENSION**
**PS022-N12AXX**

**PS022-N12AAW**

**► CIRCUIT**

**► P.C.B LAYOUT**

**► MATERIAL**

- COVER : PA + GF
- ACTUATOR : PA + GF
- BASE FRAME : PA + GF
- CAP : PA
- TERMINAL : BRONZE GOLD FLASH

# Mouser Electronics

Authorized Distributor

Click to View Pricing, Inventory, Delivery & Lifecycle Information:

[Well Buying:](#)

[PS022-N12AAW](#)