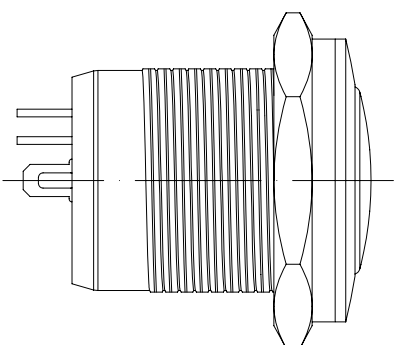
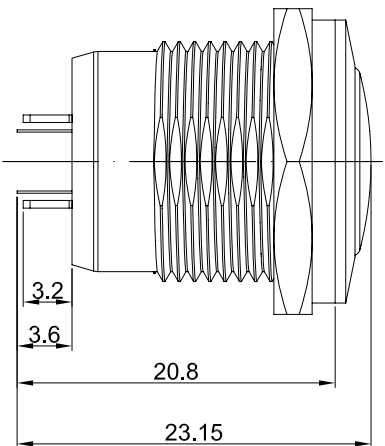
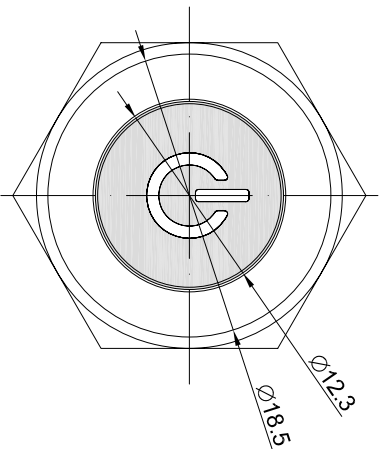
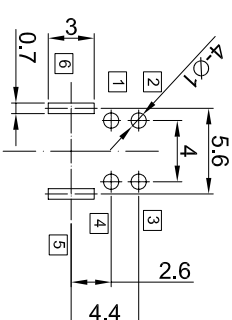


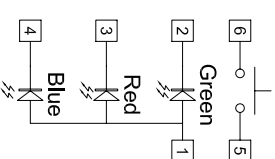
DIMENSION	TOLERANCE
BELOW 10 mm	± 0.3
10~100 mm	± 0.5
ABOVE 100 mm	± 0.8
ANGLE	± 3°



P.C.B LAYOUT



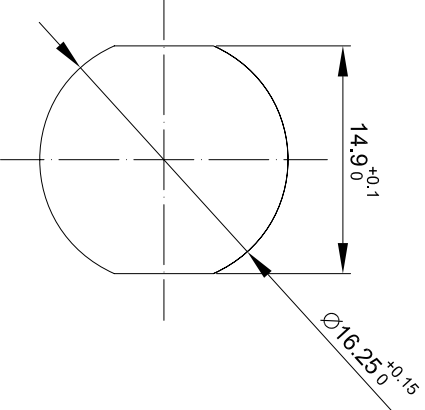
CIRCUIT DIAGRAM



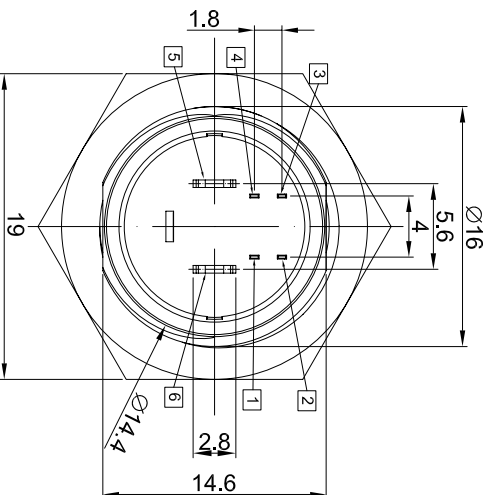
COLOR OF LED

G	Green	Y	Yellow
R	Red	B	Blue
O	Orange	W	White
RGB	FULL COLOR		

PANEL CUT OUT



1. OPERATION : LOCK TYPE
2. RATING : 12 V DC , 50 mA .
3. CONTACT RESISTANCE : 100 mΩ MAX .
4. INSULATION RESISTANCE : 500 V DC , 100MΩ MIN .
5. OPERATION FORCE : 300± 100 gf .
6. OPERATION TEMPERATURE RANGE : -20°C ~ +70°C .
7. OPERATION LIFE : 100,000 CYCLES .
8. SEALING: PANEL SEALED TO IP67



DATE	UNIT	MODE	PUSH BUTTON SWITCH WITH LED
2012/1/07	mm		
APPROVAL	SCALE	PART	
KA VEN	1 : 1		PS021-L11AASSK3-RGB
CONFIRM	VIEW	2D FILE NAME	
TERENCE	VIEW		PS021-L11AASSK3-RGB
DESIGN	VER.	3D FILE NAME	
JASON	01		

# Mouser Electronics

Authorized Distributor

Click to View Pricing, Inventory, Delivery & Lifecycle Information:

[Well Buying:](#)

[PS021-L11AASSK3-RGB](#)