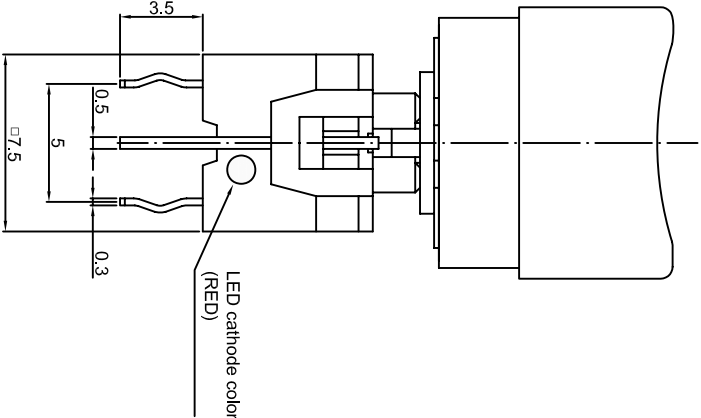
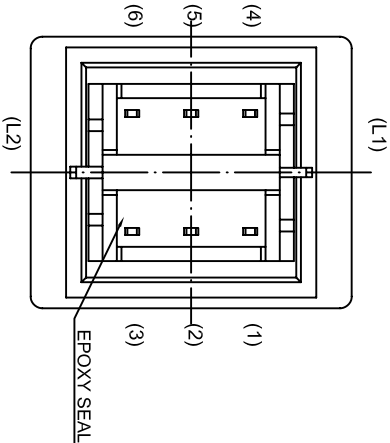
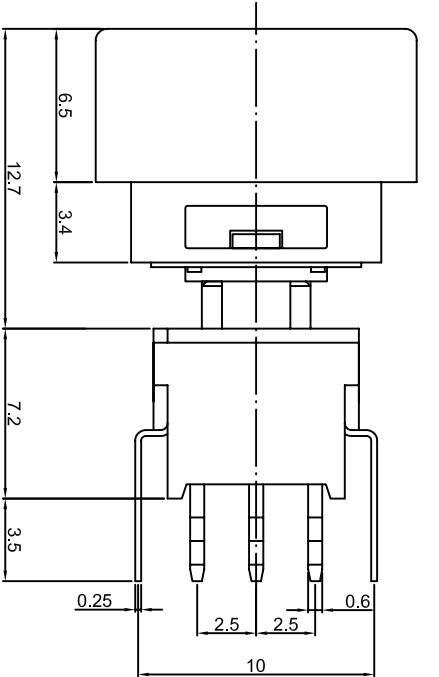
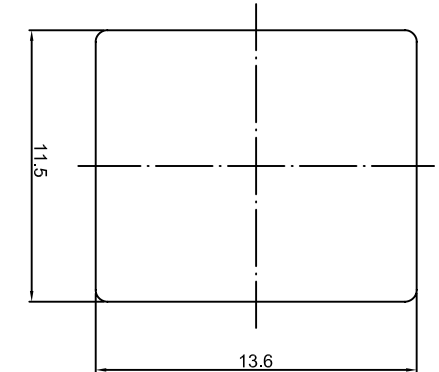
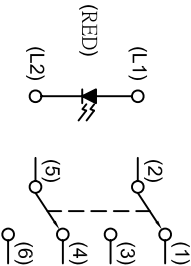


DIMENSION	TOLERANCE
BELOW 10 mm	± 0.3
10~100 mm	± 0.5
ABOVE 100 mm	± 0.8
ANGLE	± 3°

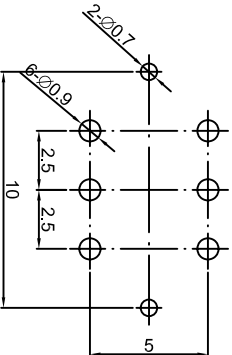


1. 2P2T , LOCK TYPE .
2. RATING : 0.1A 30V DC MAX ; 0.1mA 5V DC MIN .
3. CONTACT RESISTANCE : 50 mΩ MAX .1.5V DC ; 100mA.
4. INSULATION RESISTANCE : 500 V DC , 100 MΩ MIN .
5. OPERATING TEMPERATURE : -20°C ~ 70°C .
6. OPERATING FORCE : 250±100 gf .
7. OPERATING LIFE : 50,000 CYCLES .

CIRCUIT DIAGRAMS



PCB LAYOUT



△			DATE	2010/08/02	UNIT	mm	MODE	PUSHBUTTON SWITCH WITH LED
△			APPROVAL	KAVEN	SCALE	1 : 1	PART	PS004-L22NPS3XTURXX
△			CONFIRM	ALAN	VIEW		2D FILE NAME	PS004-L22NPS3XTURXX
	DATE	APPROVAL	DESIGN	ENGINEERING CHANGE DESCRIPTION				
				PXZ	VER.	01	3D FILE NAME	

Mouser Electronics

Authorized Distributor

Click to View Pricing, Inventory, Delivery & Lifecycle Information:

[Well Buying:](#)

[PS004-L22NPS3XTURXX](#)