
Feature -



bi-color LED illuminated available
SPST, lock / non-lock function

Application -

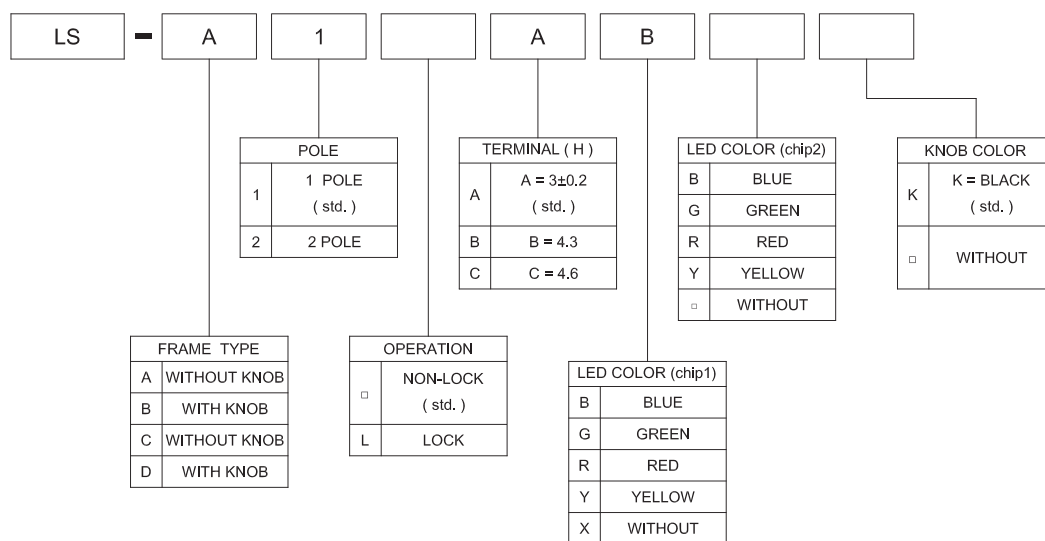
computer products
office appliance
communication equipments

SPECIFICATIONS

SWITCH SPECIFICATIONS	
POLE - POSITION	Momentary Type , LOCK Type with LED
CONTACT RATING	36 V DC , 0.2 A
CONTACT RESISTANCE	40 mΩ MAX. 1.5 V DC ; 100 mA , by Method of Voltage DROP
INSULATION RESISTANCE	100 MΩ MIN. 500 V DC
DIELECTRIC STRENGTH	Breakdown is not Allowable ; 500 V AC for 1 Minute
OPERATING FORCE	NON-LOCK TYPE : 200 ± 100 gf LOCK TYPE : 300 ± 100 gf
OPERATING LIFE	10,000 cycles
OPERATING TEMPERATURE RANGE	-20°C ~ 70°C
TOTAL TRAVEL	FULL TRAVEL : 2.2 ± 0.3 mm CONTACT TRAVEL : 1.6 ± 0.3 mm

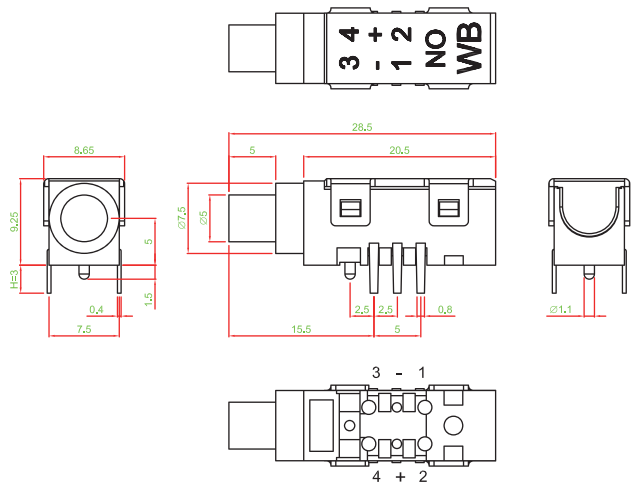
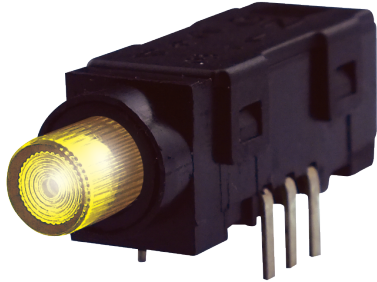
LED SPECIFICATIONS							
	ATTENTION LEDs are Electrostatic Sensitive devices		Unit	Value / LED Color			
				Blue	Green	Red	Yellow
FORWARD CURRENT	If	mA	20	20	20	20	
REVERSE VOLTAGE	Vr	V	5.0	5.0	5.0	5.0	
REVERSE CURRENT	Ir	μA	10	10	10	10	
FORWARD VOLTAGE@20mA	Vf	V	3.3-4.0	2.1-2.5	2.0-2.5	2.0-2.5	
LUMINOUS INTENSITY@20mA	Iv	mcd	1300	700	900	700	

Physical and electrical information of LED will be provided upon customer's request on switches .

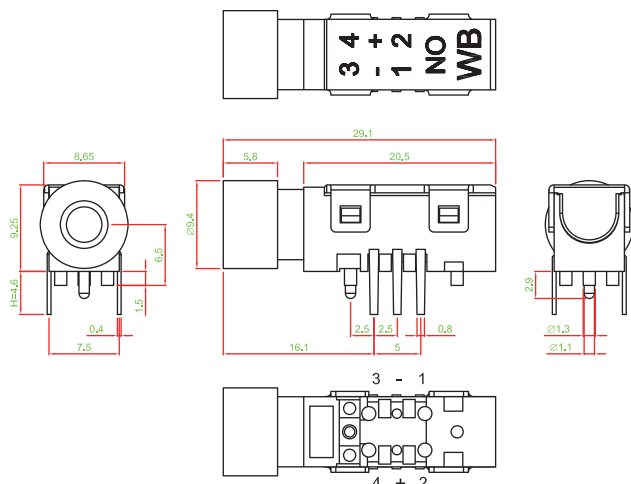
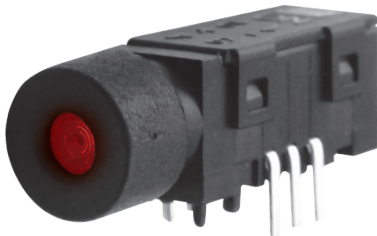
HOW TO ORDER


▶ DIMENSION

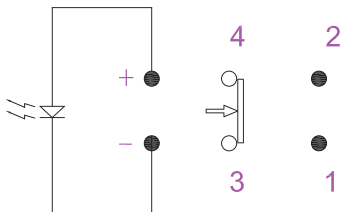
LS - A1A □□



LS - D1C □□K



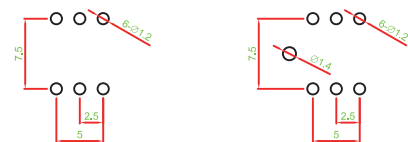
▶ CIRCUIT



▶ P.C.B LAYOUT

FRAME A or B

FRAME C or D



▶ MATERIAL

- COVER : PA + GF
- BASE FRAME : PA + GF
- ACTUATOR : PA + GF
- TERMINAL : SILVER PLATING / GOLD PLATING

Mouser Electronics

Authorized Distributor

Click to View Pricing, Inventory, Delivery & Lifecycle Information:

Well Buying:

[LS-A1AB](#) [LS-A1ABR](#) [LS-A1AG](#) [LS-A1AGR](#) [LS-A1AY](#) [LS-B1AGK](#) [LS-B1ARK](#) [LS-A1AGY](#)