

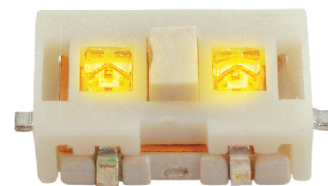


Feature :

Compact size
Two LEDs inside
SMD

Applications :

Consumer products
Computer products
Instrumentation
Communication equipments
Hand-held devices

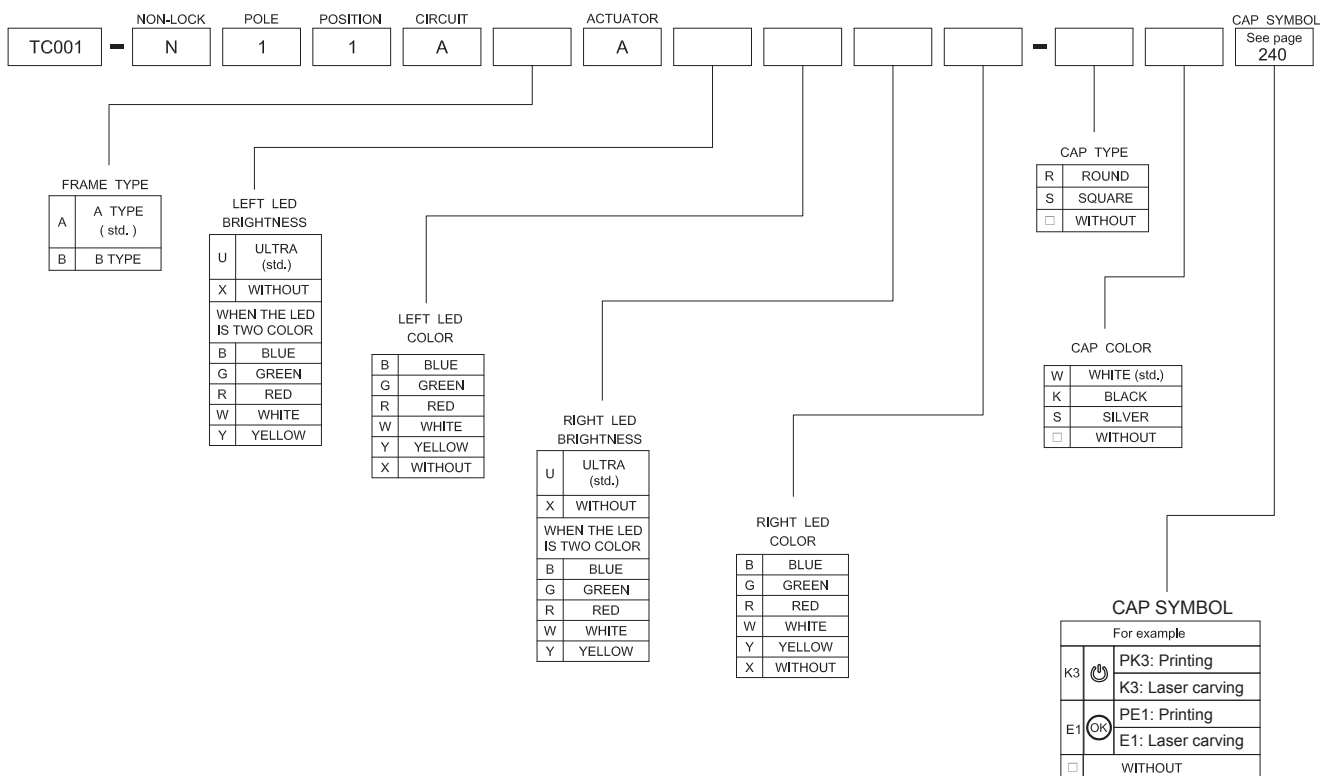


SWITCH SPECIFICATIONS	
POLE - POSITION	Momentary Type , SPST with LED
CONTACT RATING	12 V DC , 50 mA MAX. ; 1 V DC , 10 μ A MIN.
CONTACT RESISTANCE	500 m Ω MAX. 1.5 V DC ; 100 mA , by Method of Voltage DROP
INSULATION RESISTANCE	100 M Ω MIN. 100 V DC for 1 minute
DIELECTRIC STRENGTH	Breakdown is not Allowable ; 250 V AC for 1 Minute
OPERATING FORCE	160 +75 / -30 gf
OPERATING LIFE	30,000 cycles
OPERATING TEMPERATURE RANGE	-40°C ~ 85°C
TOTAL TRAVEL	0.25 +0.2 / -0.1 mm

LED SPECIFICATIONS		Value / LED Color						
<p>ATTENTION LEDs are Electrostatic Sensitive devices</p> <p>(+) () () (-)</p>	Unit	Value / LED Color						
		Blue	Pure Green	Red	Yellow	Orange	Green	White
LUMINOUS INTENSITY@20mA Iv	mcd	80	150	220	180	320	50	450
Dominant Wavelength AD	nm	465	525	630	590	601	567	/
FORWARD VOLTAGE@20mA Vf	V	3.3	3.2	1.95	2	2.1	2.1	3.3

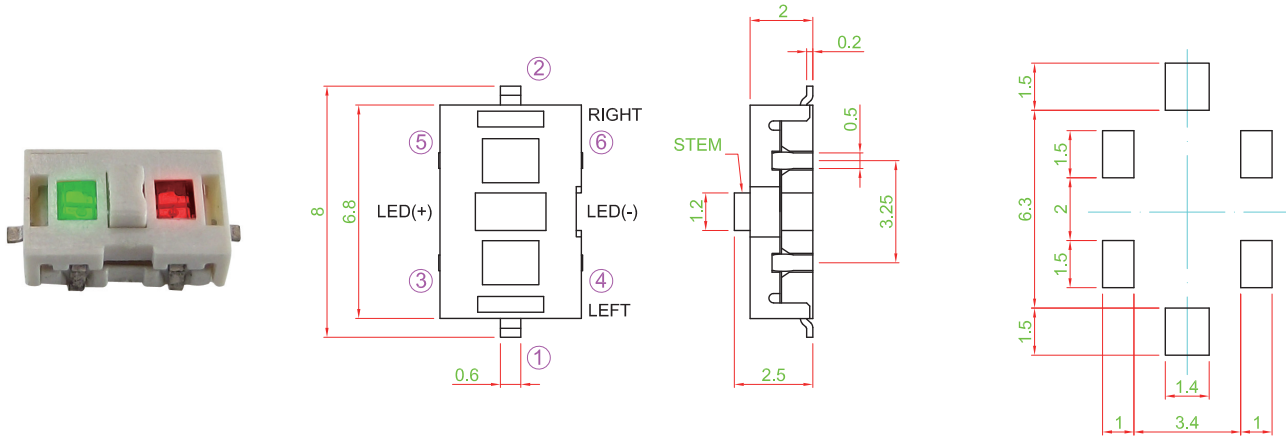
■ A single bin cannot be ordered, please contact us in advance if you need a particular bin sorting before placing your order to clarify the lead time, MOQ and pricing

► HOW TO ORDER

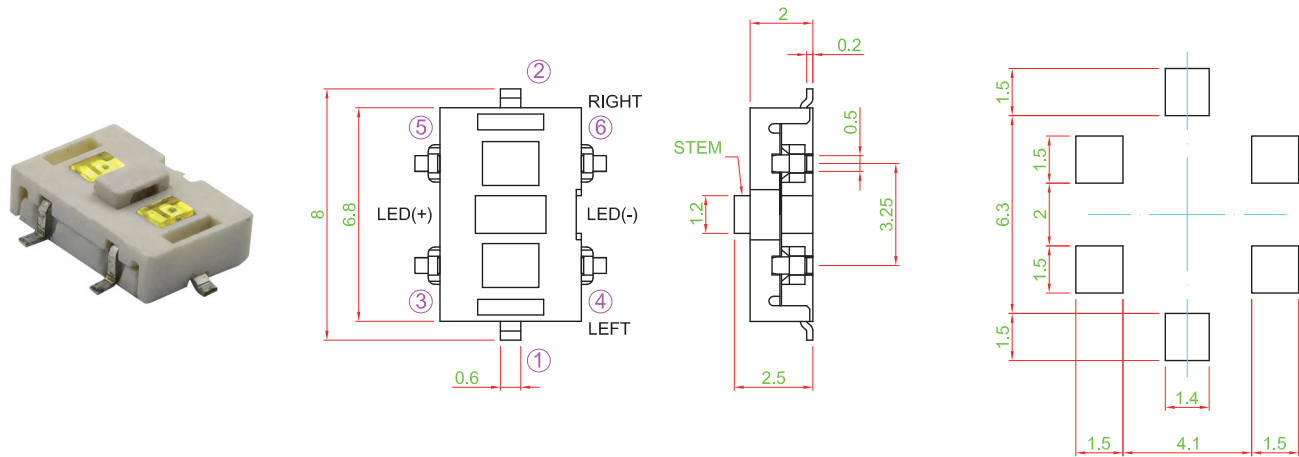


DIMENSION

TC001-N11AAA □ □ □ □

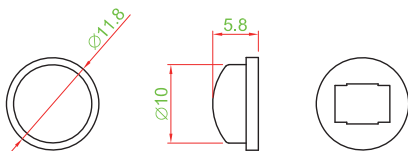


TC001-N11ABA □ □ □ □

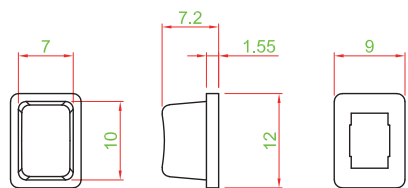


CAP TYPE

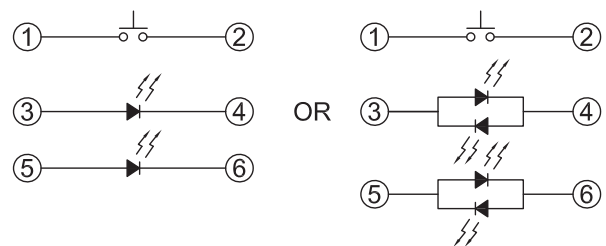
TYPE : R



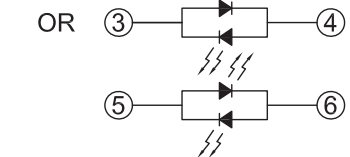
TYPE : S



CIRCUIT



OR



Mouser Electronics

Authorized Distributor

Click to View Pricing, Inventory, Delivery & Lifecycle Information:

[Well Buying:](#)

[TS001-D11WHAKTUGXX](#) [TS001-D11WHAKTUWXX](#) [TS001-D11WHAKTUYXX](#) [TS001-T11WHAKT-RGB](#)