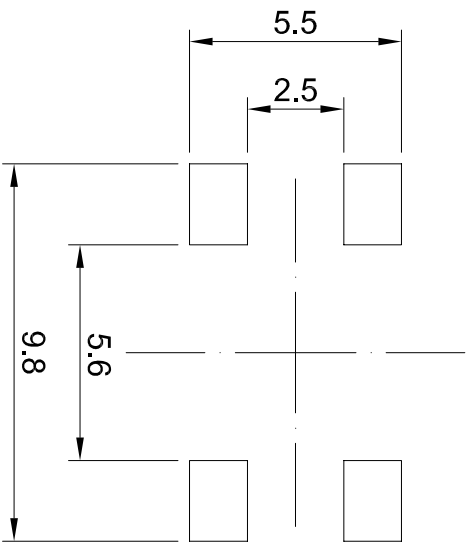
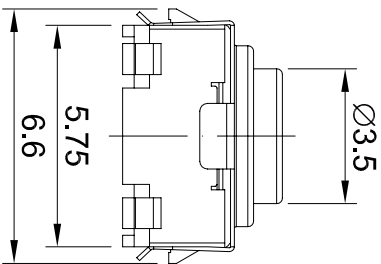
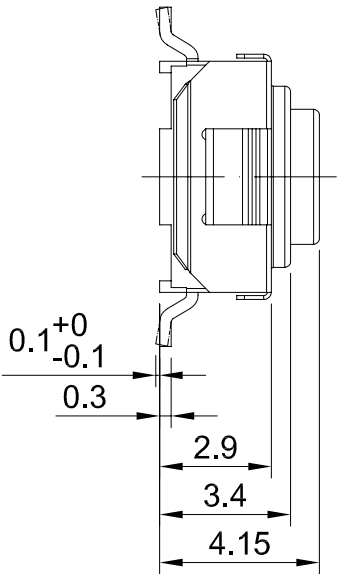
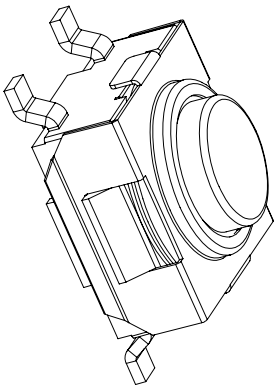
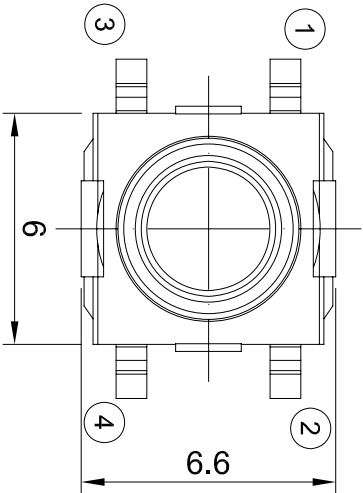
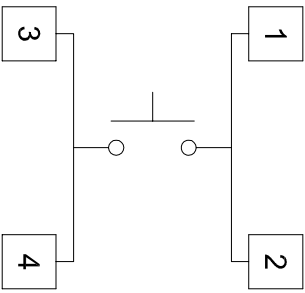


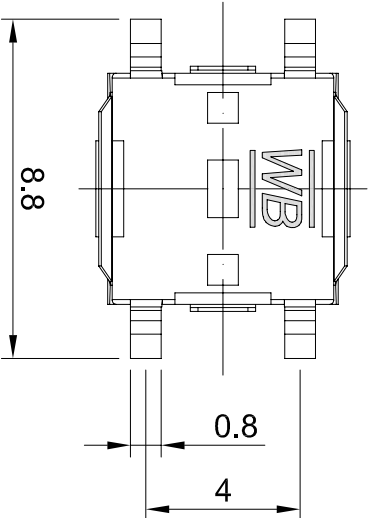
DIMENSION	TOLERANCE
BELOW 10 mm	± 0.3
10~100 mm	± 0.5
ABOVE 100 mm	± 0.8
ANGLE	± 3°




P.C.B LAYOUT



CIRCUIT DIAGRAM



1. RATING : 12 V DC , 50 mA
2. CONTACT RESISTANCE : 100 mΩ MAX.
3. INSULATION RESISTANCE : 100 V DC , 1000MΩ MIN.
4. OPERATION FORCE : 450± 150 gf
5. OPERATION TEMPERATURE RANGE : -20°C ~ +70°C
6. OPERATION LIFE : 500,000 CYCLES
7. DEGREE OF PROTECTION : IP 67

△3				DATE	2011/02/24	UNIT	mm	MODE	TACT SWITCH		
△2				APPROVAL	KAVEN	SCALE	1 : 1	PART	TC009-N11ABA		
△1				CONFIRM	ALAN	VIEW	 	2D FILE NAME	TC009-N11ABA		
DATE	APPROVAL	DESIGN	ENGINEERING CHANGE DESCRIPTION			DESIGN	XUWEI	VER.	01	3D FILE NAME	

WB Well Buying Industrial Co.,Ltd.

Mouser Electronics

Authorized Distributor

Click to View Pricing, Inventory, Delivery & Lifecycle Information:

[Well Buying:](#)

[TC009-N11ABA](#)