

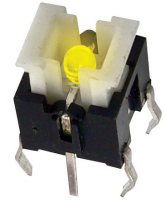


### Feature :

- Small size
- Full color LED illuminated available
- Long electrical life cycles
- SMD and vertical PCB terminal

### Applications :

- Consumer products
- Computer products
- Instrumentation
- Communication equipments

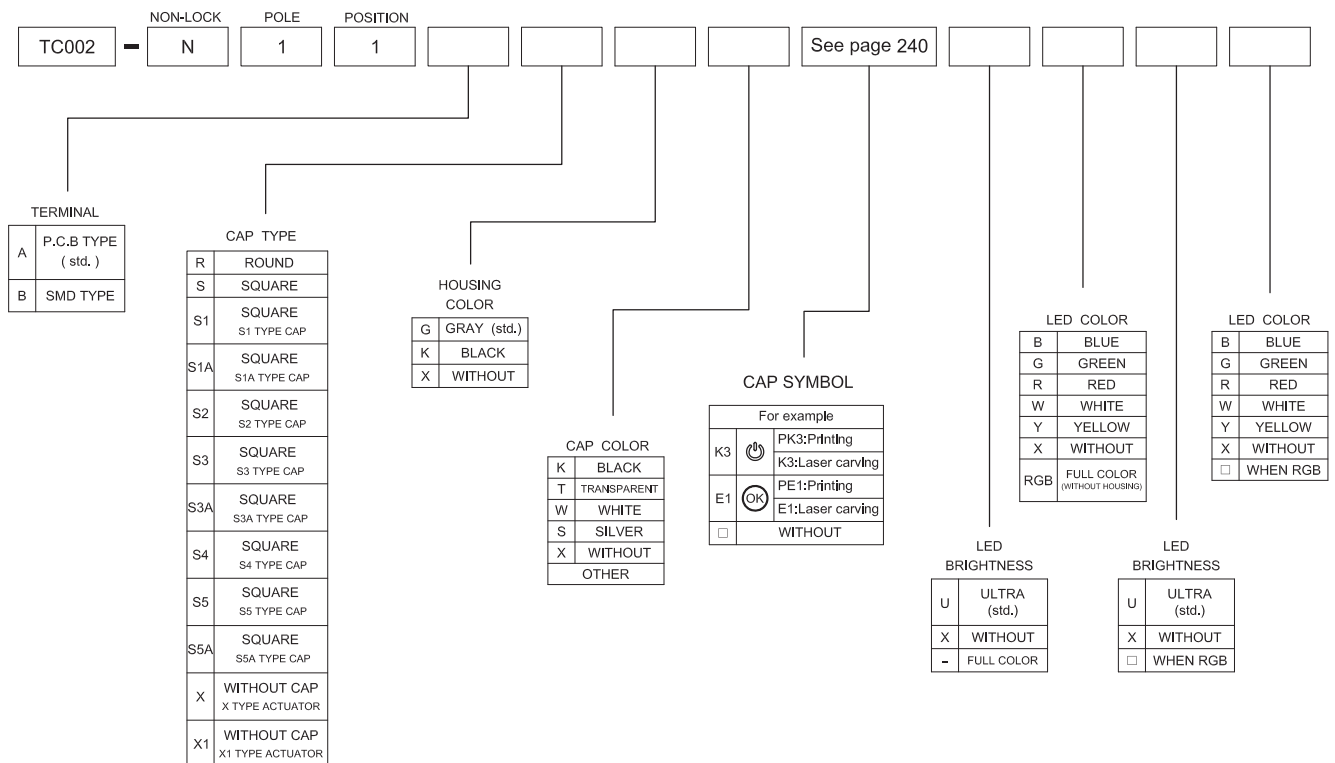


SWITCH SPECIFICATIONS	
POLE - POSITION	1P1T , with LED
CONTACT RATING	12 V DC , 50 mA
CONTACT RESISTANCE	100 mΩ MAX. 1.5 V DC ; 100 mA , by Method of Voltage DROP
INSULATION RESISTANCE	100 MΩ MIN. 500 V DC
DIELECTRIC STRENGTH	Breakdown is not Allowable ; 500 V AC for 1 Minute
OPERATING FORCE	180 ± 50 gf
OPERATING LIFE	500,000 cycles
OPERATING TEMPERATURE RANGE	-40°C ~ 85°C
TOTAL TRAVEL	0.2 ± 0.1 mm

LED SPECIFICATIONS		Value / LED Color						
ATTENTION LEDs are Electrostatic Sensitive devices 	Unit							
		Blue 10mA	Pure Green	Red	Yellow	Orange	Green	White
LUMINOUS INTENSITY@20mA I <sub>v</sub>	mcd	200	800	1800	1800	1800	800	1500
Dominant Wavelength λ <sub>D</sub>	nm	470	525	630	590	601	567	/
FORWARD VOLTAGE@20mA V <sub>f</sub>	V	3.05	3.2	1.95	2	2.1	2.1	3.2

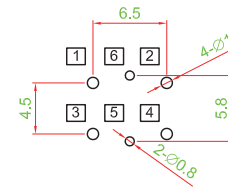
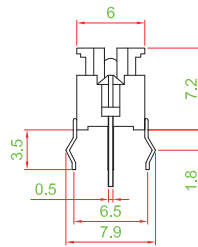
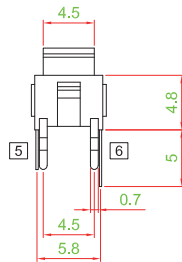
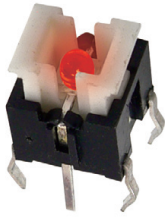
■ A single bin cannot be ordered, please contact us in advance if you need a particular bin sorting before placing your order to clarify the lead time, MOQ and pricing

### HOW TO ORDER

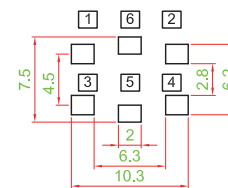
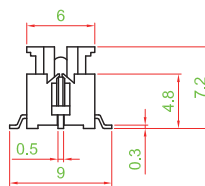
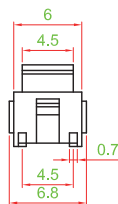


## ► TERMINAL TYPE

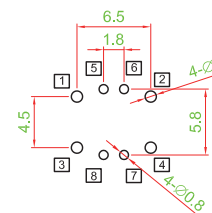
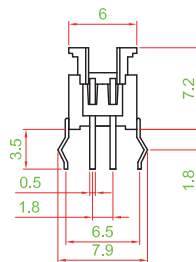
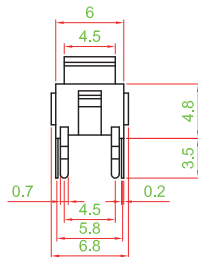
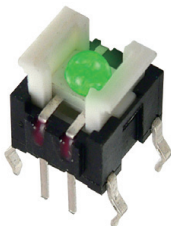
TC002-N11AXXX □□□□



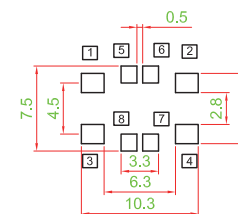
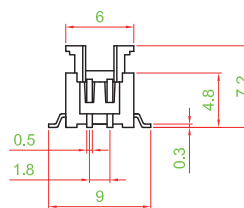
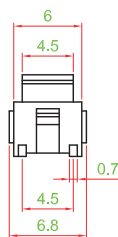
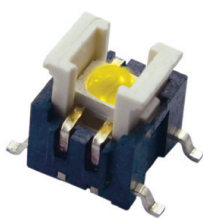
TC002-N11BXXX □□□□



TC002-N11AXXX - R G B

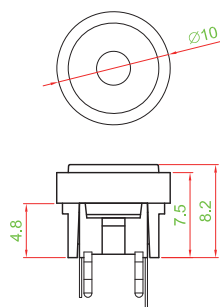


TC002-N11BXXX - R G B

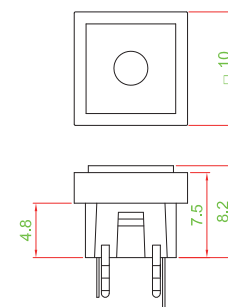


## ► HOUSING TYPE (NOT FOR RGB LED)

R TYPE



S TYPE

TACT  
SWITCHPUSH  
BUTTON  
SWITCHLED TOUCH  
SENSOR  
SWITCH5 DIRECTION  
NAVIGATION  
SWITCH  
WITH LEDMEMBRANE  
SWITCHLED LIGHT  
BARSLIDE  
SWITCHROTARY  
SWITCHROCKER  
SWITCHDETECT  
SWITCH

ENCODER

INTERRUPTER

MINIATURE  
MICRO  
SWITCHTELEPHONE  
HOOK  
SWITCHDOOR  
SWITCHMINI SIZE  
SOCKET

KNOB

CAP  
SYMBOL



TACT  
SWITCH

PUSH  
BUTTON  
SWITCH

LED TOUCH  
SENSOR  
SWITCH

5 DIRECTION  
NAVIGATION  
SWITCH  
WITH LED

MEMBRANE  
SWITCH

LED LIGHT  
BAR

SLIDE  
SWITCH

ROTARY  
SWITCH

ROCKER  
SWITCH

DETECT  
SWITCH

ENCODER

INTERRUPTER

MINIATURE  
MICRO  
SWITCH

TELEPHONE  
HOOK  
SWITCH

DOOR  
SWITCH

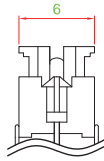
MINI SIZE  
SOCKET

KNOB

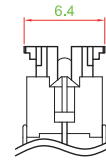
CAP  
SYMBOL

## ► ACTUATOR TYPE

X TYPE

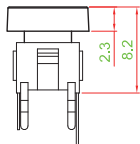
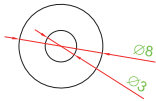


X1 TYPE

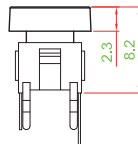
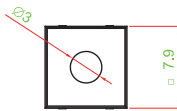
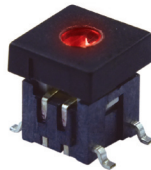


## ► CAP TYPE

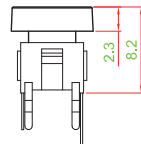
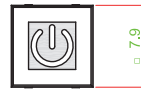
R TYPE



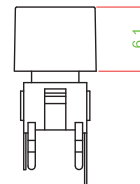
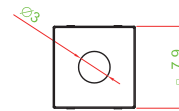
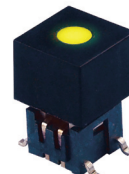
S TYPE



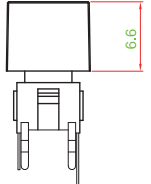
S4 TYPE



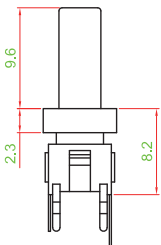
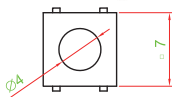
S5 TYPE



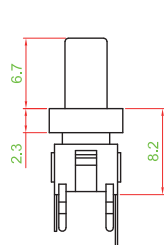
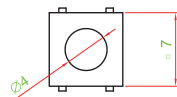
S5A TYPE



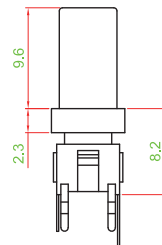
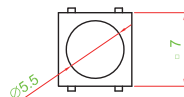
S1 TYPE



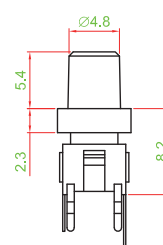
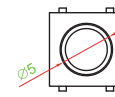
S1A TYPE



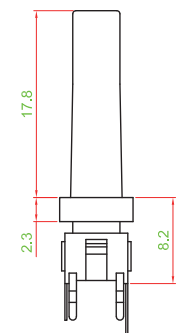
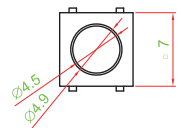
S2 TYPE



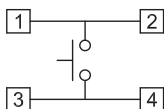
S3A TYPE



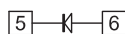
S3 TYPE



## ► CIRCUIT



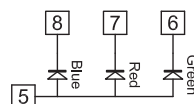
SINGLE COLOR



TWO COLOR



FULL COLOR



# Mouser Electronics

Authorized Distributor

Click to View Pricing, Inventory, Delivery & Lifecycle Information:

[Well Buying:](#)

[TC001-N11AAAURUR](#)