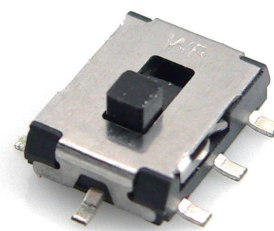


Feature :

Compact size
Reflow soldering available

Application :

Consumer products
Computer products
Instrumentation
Communication equipments
Hand-held devices

TACT
SWITCHPUSH
BUTTON
SWITCHLED TOUCH
SENSOR
SWITCH5 DIRECTION
NAVIGATION
SWITCH
WITH LEDMEMBRANE
SWITCHLED LIGHT
BARSLIDE
SWITCHROTARY
SWITCHROCKER
SWITCHDETECT
SWITCH

ENCODER

INTERRUPTER

MINIATURE
MICRO
SWITCHTELEPHONE
HOOK
SWITCHDOOR
SWITCHMINI SIZE
SOCKET

KNOB

CAP
SYMBOLCAP
SYMBOL

SWITCH SPECIFICATIONS

POLE - POSITION	3P2T , SMT TYPE
CONTACT RATING	6 V DC , 0.3 A
CONTACT RESISTANCE	50 mΩ MAX. 1.5 V DC ; 100 mA , by Method of Voltage DROP
INSULATION RESISTANCE	100 MΩ MIN. 500 V DC
DIELECTRIC STRENGTH	Breakdown is not Allowable ; 500 V AC for 1 Minute
OPERATING FORCE	200 ± 150gf
OPERATING LIFE	10,000 cycles
OPERATING TEMPERATURE RANGE	-40°C ~ 85°C
TOTAL TRAVEL	2.0 ± 0.2 mm

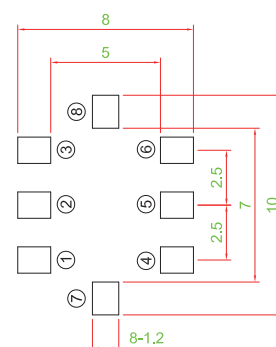
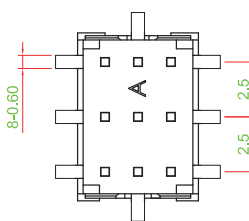
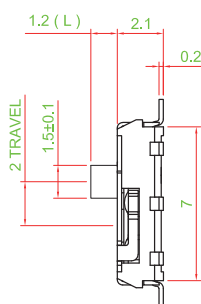
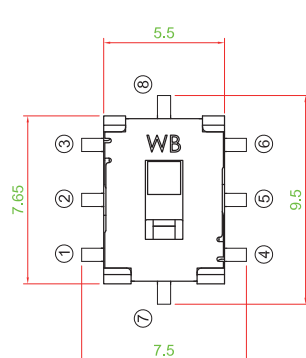
► HOW TO ORDER

	TERMINAL SMD TYPE	POLE	POSITION	NON- SHORTING	FRAME TYPE	ACTUATOR MATERIAL	ACTUATOR (L)=1.2
SS001	S	3	2	N	A	P	A

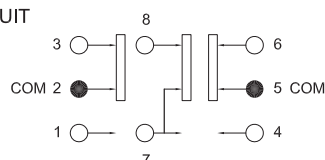
► DIMENSION

SS001-S32NAPA

► P.C.B. LAYOUT



► CIRCUIT



Mouser Electronics

Authorized Distributor

Click to View Pricing, Inventory, Delivery & Lifecycle Information:

[Well Buying:](#)

[SS001-S032NAPA1.2](#)