



## Feature :

Small size push switch (12x6 mm)  
Bi-color LED illuminated available  
Lock / non-lock function  
4P2T

## Application :

Consumer products  
Computer products  
Instrumentation  
Communication equipments



## SWITCH SPECIFICATIONS

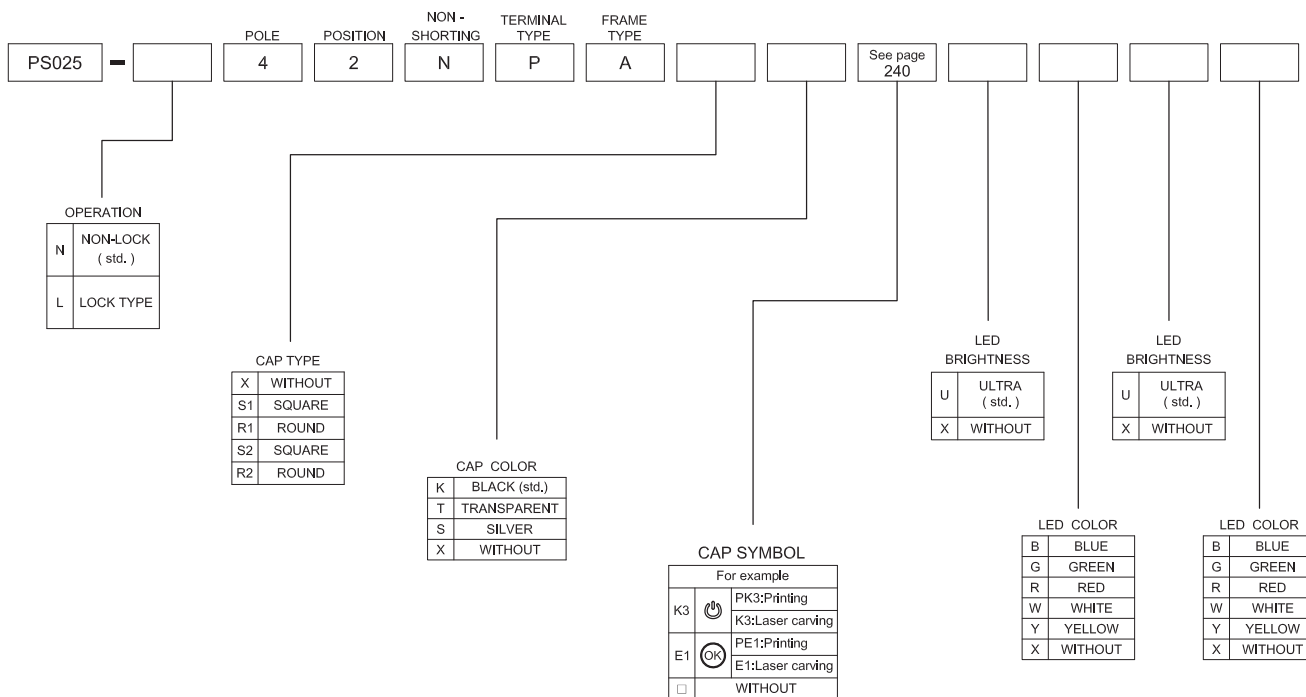
POLE - POSITION	4P2T
CONTACT RATING	12 V DC , 50 mA
CONTACT RESISTANCE	100 mΩ MAX. 1.5 V DC ; 100 mA , by Method of Voltage DROP
INSULATION RESISTANCE	100 MΩ MIN. 500 V DC for 1 minute
DIELECTRIC STRENGTH	Breakdown is not Allowable ; 500 V AC for 1 Minute
OPERATING FORCE	300 ± 100 gf
OPERATING LIFE	50,000 cycles
OPERATING TEMPERATURE RANGE	-40°C ~ 85°C
TOTAL TRAVEL / OPERATING TRAVEL	2 ± 0.3 mm / 1.0 ± 0.3 mm

## LED SPECIFICATIONS

Unit	Value / LED Color						
	Blue	Pure Green	Red	Yellow	Orange	Green	White
LUMINOUS INTENSITY@20mA I <sub>v</sub>	80	150	220	180	320	50	450
Dominant Wavelength λ <sub>D</sub>	465	525	630	590	601	567	/
FORWARD VOLTAGE@20mA V <sub>f</sub>	3.3	3.2	1.95	2	2.1	2.1	3.3

■ A single bin cannot be ordered, please contact us in advance if you need a particular bin sorting before placing your order to clarify the lead time, MOQ and pricing

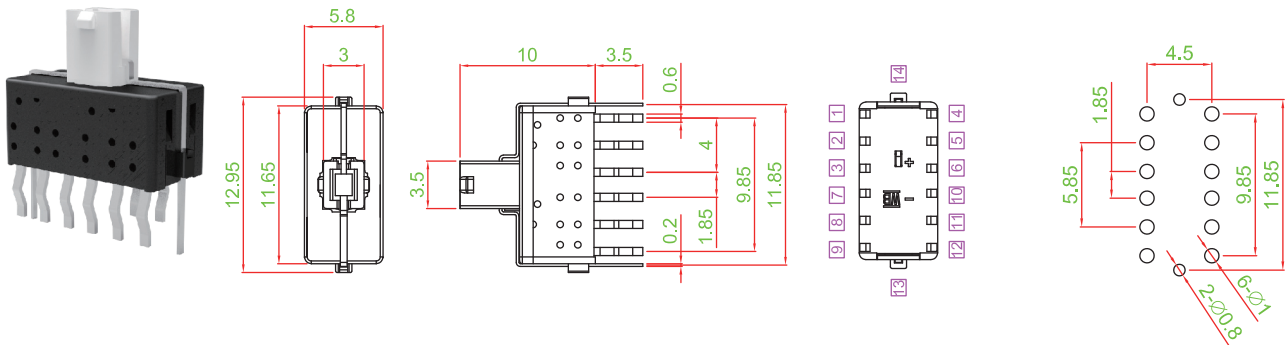
## HOW TO ORDER





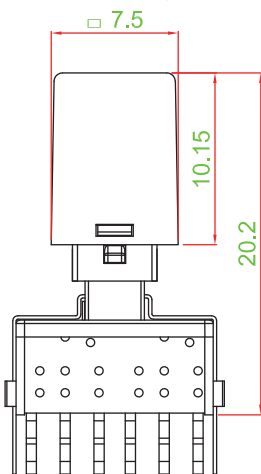
## DIMENSION

PS025-L42NPAXX□□□□

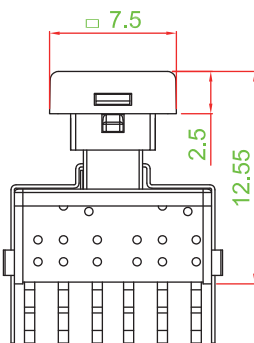
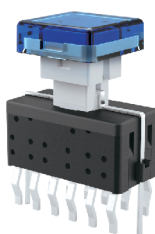


## CAP TYPE

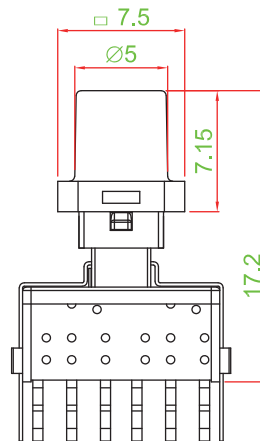
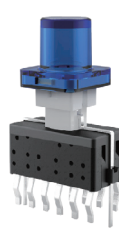
S1 TYPE



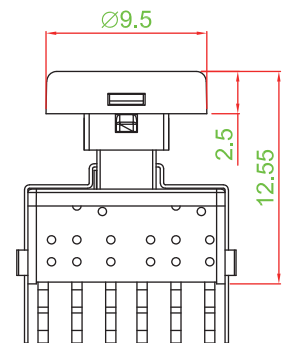
S2 TYPE



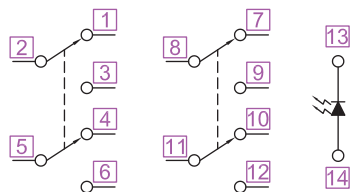
R1 TYPE



R2 TYPE



## CIRCUIT


TACT  
SWITCH

PUSH  
BUTTON  
SWITCH

LED TOUCH  
SENSOR  
SWITCH

5 DIRECTION  
NAVIGATION  
SWITCH  
WITH LED

MEMBRANE  
SWITCH

LED LIGHT  
BAR

SLIDE  
SWITCH

ROTARY  
SWITCH

ROCKER  
SWITCH

DETECT  
SWITCH

ENCODER

INTERRUPTER

MINIATURE  
MICRO  
SWITCH

TELEPHONE  
HOOK  
SWITCH

DOOR  
SWITCH

MINI SIZE  
SOCKET

KNOB

CAP  
SYMBOL



# Mouser Electronics

Authorized Distributor

Click to View Pricing, Inventory, Delivery & Lifecycle Information:

[Well Buying:](#)

[PS025-L42NPAS1WURXX](#)