

Feature :

Thru-hole terminal
SPST, SPDT
Momentary function

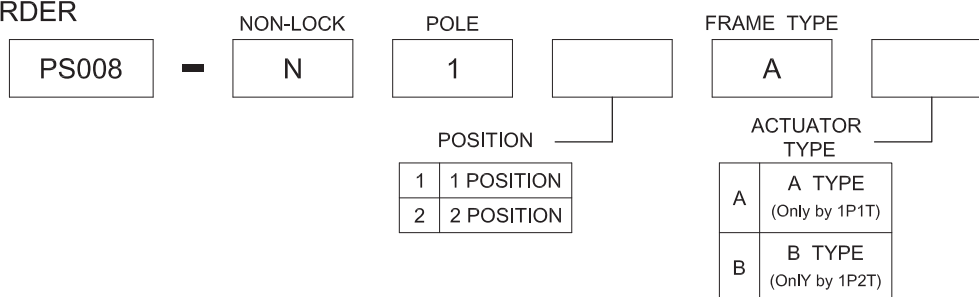
Application :

- Instrumentation
- Telecommunications
- Computer and peripherals
- Networking equipments
- Office appliances
- Home electrical appliances



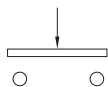
SWITCH SPECIFICATIONS	
POLE - POSITION	Momentary action , 1P1T or 1P2T
CONTACT RATING	1Amp with resistive load @ 125VAC or 28VDC
CONTACT RESISTANCE	20 mΩ MAX. 1.5 V DC ; 100 mA , by Method of Voltage DROP
INSULATION RESISTANCE	1000 MΩ MIN. 500 V DC
DIELECTRIC STRENGTH	Breakdown is not Allowable ; 1500 V AC for 1 Minute
OPERATING FORCE	250 ± 100 gf
OPERATING LIFE	30,000 cycles
OPERATING TEMPERATURE RANGE	-40°C ~ 85°C
TOTAL TRAVEL	SPST : 1.5 ± 0.3 mm , SPDT : 1.2 ± 0.3mm

▶ HOW TO ORDER

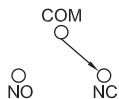


► CIRCUIT

1P1T:

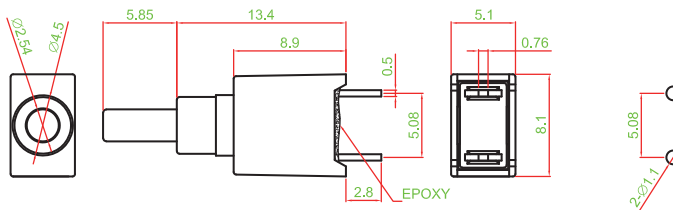


1P2T :

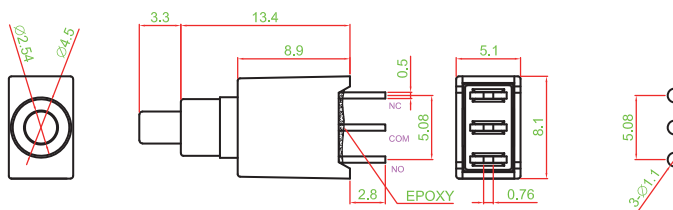


► DIMENSION

PS008-N11AA



PS008-N12AB



Mouser Electronics

Authorized Distributor

Click to View Pricing, Inventory, Delivery & Lifecycle Information:

[Well Buying:](#)

[PS008-N11AA](#)