



Feature :



Noiseless
Full color LED illuminated available
Long electrical life cycles
SPST, DPST, momentary function

Application :

Audio / video products
Instrumentation
Communication equipments

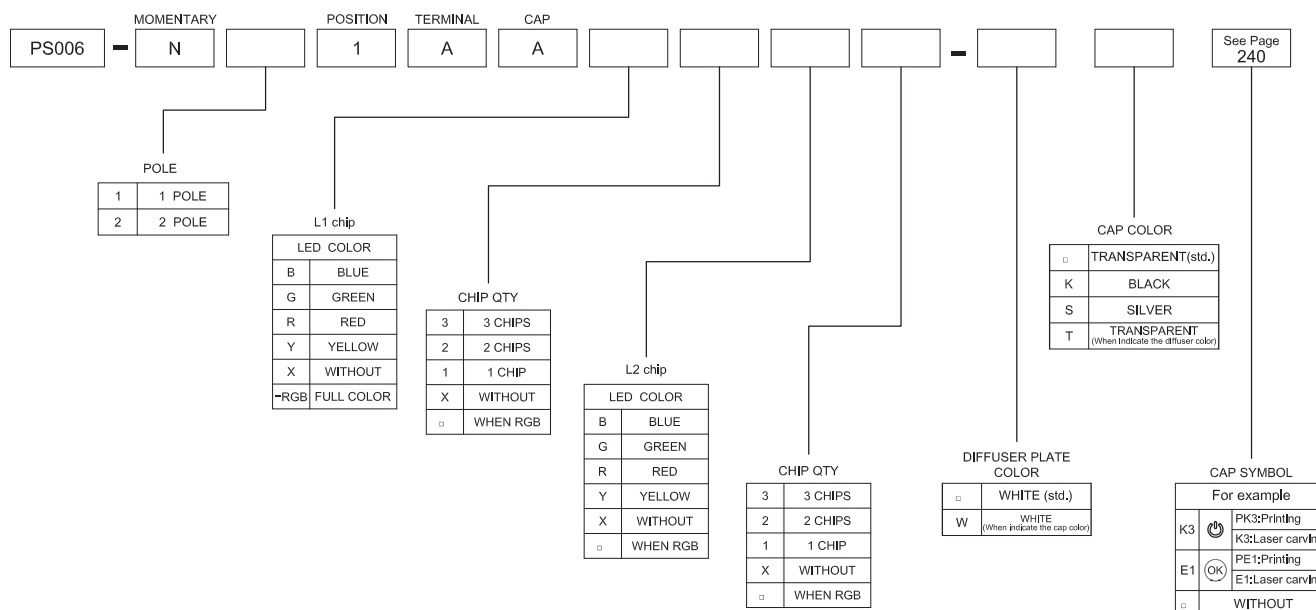


SWITCH SPECIFICATIONS	
POLE - POSITION	OFF - ON for Momentary Type , SPST , DPST
CONTACT RATING	12mA 12V DC
CONTACT RESISTANCE	200 mΩ MAX.
INSULATION RESISTANCE	100 MΩ MIN. 500 V DC
DIELECTRIC STRENGTH	Breakdown is not Allowable ; 500 V AC for 1 Minute
OPERATING FORCE	150 ± 100 gf (SPST) 200 ± 150 gf (DPST)
OPERATING LIFE	200,000 cycles
OPERATING TEMPERATURE RANGE	-40°C ~ 85°C
TOTAL TRAVEL	2.2 ± 0.2 mm

LED SPECIFICATIONS									
<div><p>ATTENTION LEDs are Electrostatic Sensitive devices</p><p>(+) ○ (−)</p></div>	Unit	Value / LED Color							
		Blue	Pure Green	Red	Yellow	Orange	Green	White	
	LUMINOUS INTENSITY@20mA I _v	mcd	72	413	216	170	253	50	253
	Dominant Wavelength λ _D	nm	468	525	630	590	601	570	/
FORWARD VOLTAGE@20mA V _f	V	3.3	3.3	1.95	2	2.1	2.1	3.3	

■ A single bin cannot be ordered, please contact us in advance if you need a particular bin sorting before placing your order to clarify the lead time, MOQ and pricing

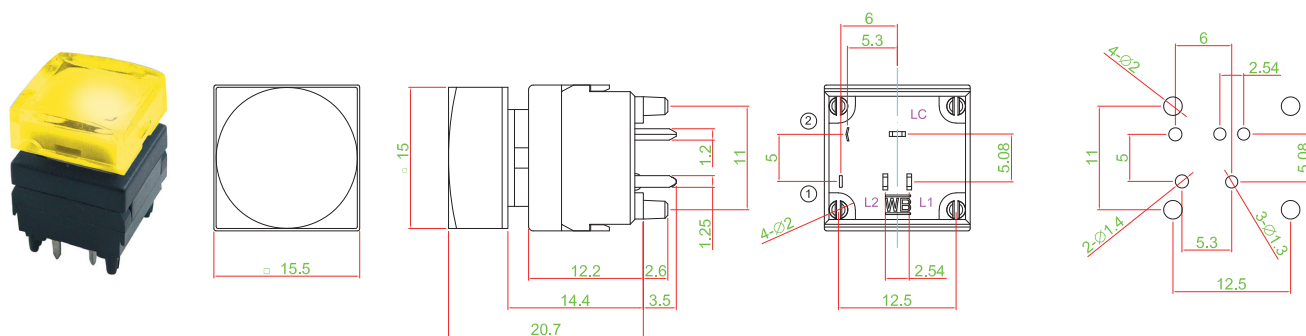
► HOW TO ORDER



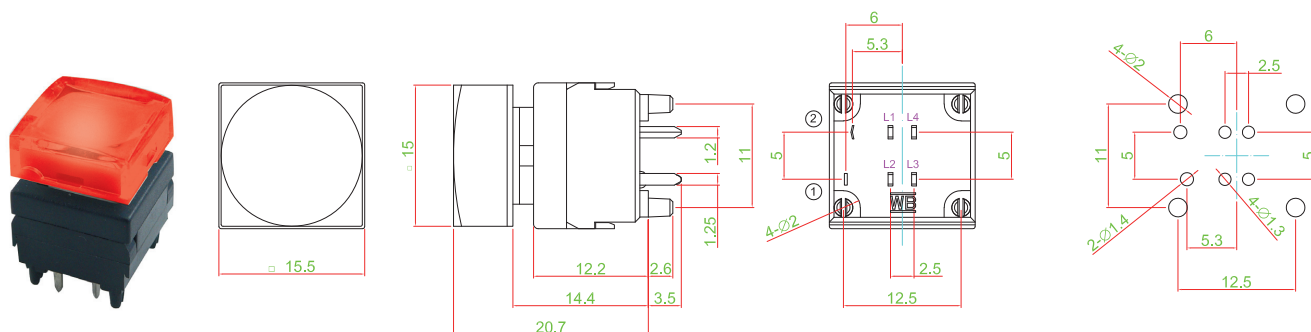


DIMENSION

PS006-N11AA □ □ □ □



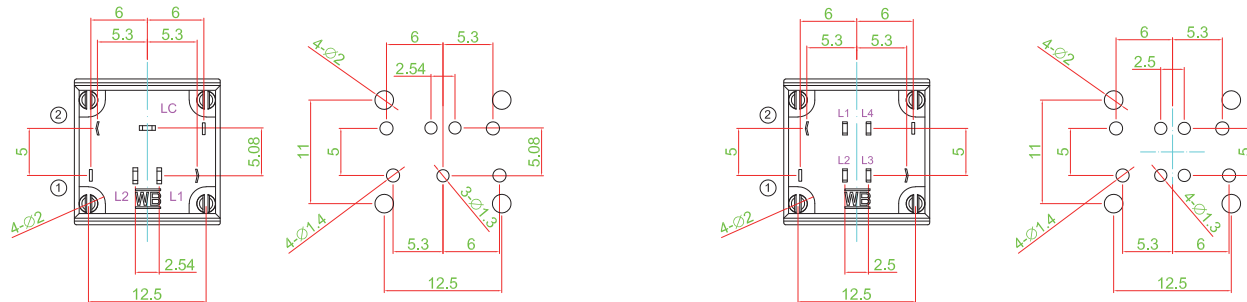
PS006-N11AA-RGB



2 POLE TYPE (2P1T)

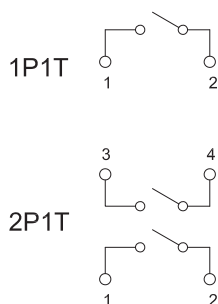
PS006-N21AA □ □ □ □

PS006-N21AA-RGB

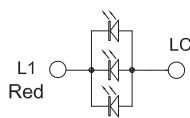


CIRCUIT

SWITCH

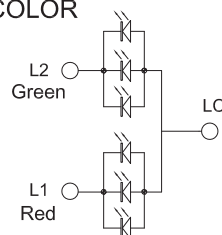


SINGLE COLOR

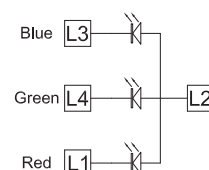


LED

TWO COLOR



RGB COLOR



Mouser Electronics

Authorized Distributor

Click to View Pricing, Inventory, Delivery & Lifecycle Information:

[Well Buying:](#)

[PS006-N11AAB3XX](#) [PS006-N11AAG3R3](#)