



Feature :

- Small size
- Bi-color LED illuminated available
- Right angle and vertical PCB terminal
- SPDT, DPDT, lock / non-lock function

Application :

- Consumer products
- Computer products
- Instrumentation
- Communication equipments

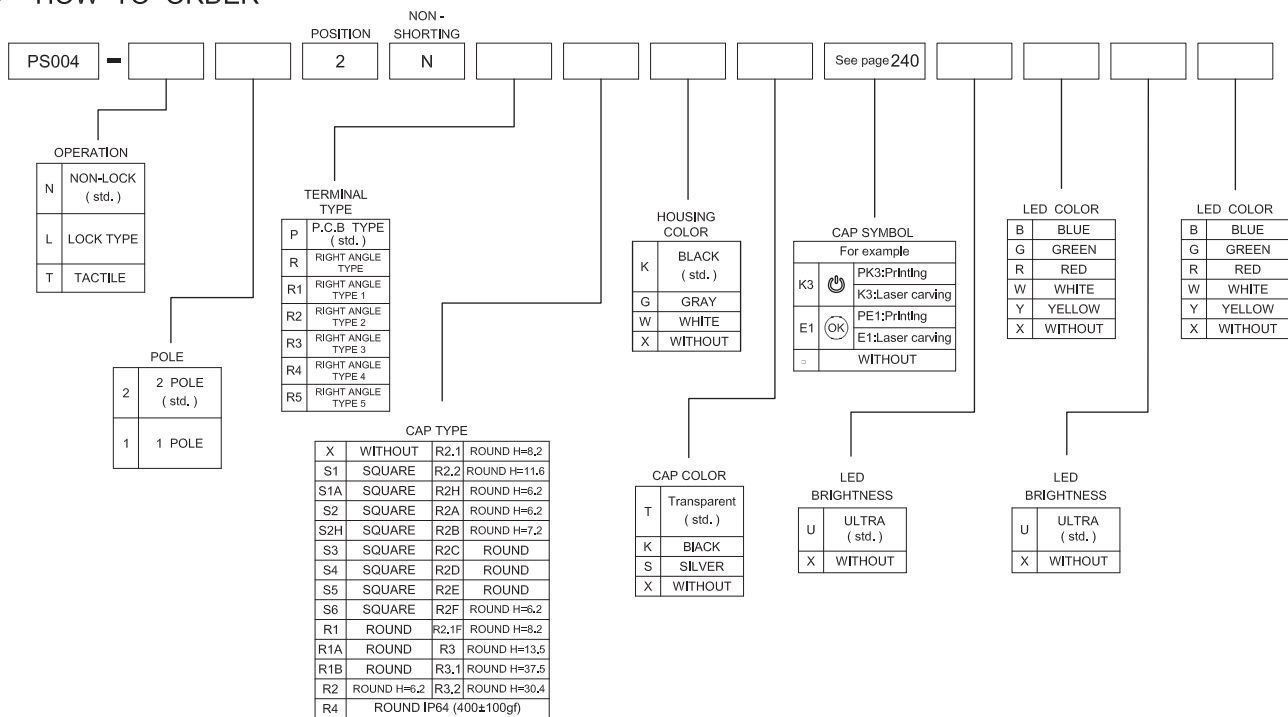


SWITCH SPECIFICATIONS	
POLE - POSITION	1P2T , 2P2T LOCK / NON-LOCK Action with LED
CONTACT RATING	30 VDC , 0.1A / 5 VDC , 0.1mA
CONTACT RESISTANCE	50 mΩ MAX. 1.5 V DC ; 100 mA , by Method of Voltage DROP
INSULATION RESISTANCE	100 MΩ MIN. 500 V DC
DIELECTRIC STRENGTH	Breakdown is not Allowable ; 500 V AC for 1 Minute
OPERATING FORCE	250 ± 100 gf
OPERATING LIFE	50,000 cycles
OPERATING TEMPERATURE RANGE	-40°C ~ 85°C
TOTAL TRAVEL	TRAVEL - 0.7 ± 0.3 mm FULL TRAVEL - 1.8 ± 0.3 mm

LED SPECIFICATIONS								
ATTENTION LEDs are Electrostatic Sensitive devices 	Unit	Value / LED Color						
		Blue (5mA)	Pure Green	Red	Yellow	Orange	Green	White
LUMINOUS INTENSITY@20mA I <sub>v</sub>	mcd	25	180	200	200	250	55	250
Dominant Wavelength λ <sub>D</sub>	nm	470	525	630	590	601	567	/
FORWARD VOLTAGE@20mA V <sub>f</sub>	V	2.8	3.2	1.95	2	2.1	2.1	4

■ A single bin cannot be ordered, please contact us in advance if you need a particular bin sorting before placing your order to clarify the lead time, MOQ and pricing

► HOW TO ORDER



- TACT SWITCH
- PUSH BUTTON SWITCH
- LED TOUCH SENSOR SWITCH
- 5 DIRECTION NAVIGATION SWITCH WITH LED
- MEMBRANE SWITCH
- LED LIGHT BAR
- SLIDE SWITCH
- ROTARY SWITCH
- ROCKER SWITCH
- DETECT SWITCH
- ENCODER
- INTERRUPTER
- MINIATURE MICRO SWITCH
- TELEPHONE HOOK SWITCH
- DOOR SWITCH
- MINI SIZE SOCKET
- KNOB
- CAP SYMBOL



TACT  
SWITCH

PUSH  
BUTTON  
SWITCH

LED TOUCH  
SENSOR  
SWITCH

5 DIRECTION  
NAVIGATION  
SWITCH  
WITH LED

MEMBRANE  
SWITCH

LED LIGHT  
BAR

SLIDE  
SWITCH

ROTARY  
SWITCH

ROCKER  
SWITCH

DETECT  
SWITCH

ENCODER

INTERRUPTER

MINIATURE  
MICRO  
SWITCH

TELEPHONE  
HOOK  
SWITCH

DOOR  
SWITCH

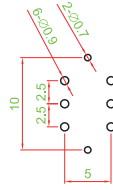
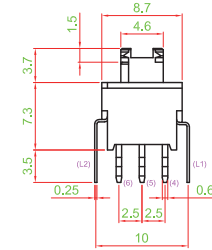
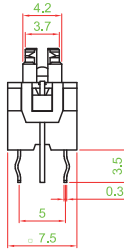
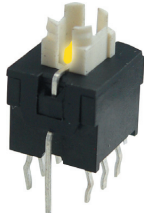
MINI SIZE  
SOCKET

KNOB

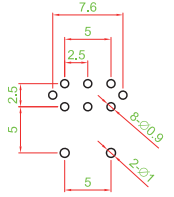
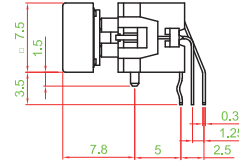
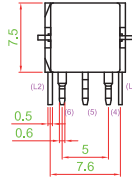
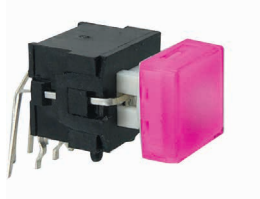
CAP  
SYMBOL

▶ TERMINAL TYPE

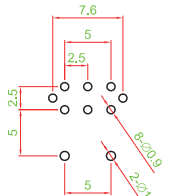
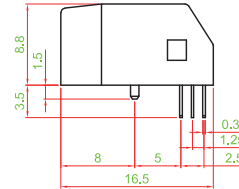
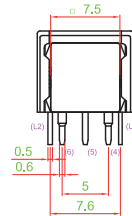
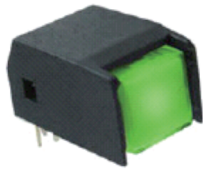
PS004-L22NPXXX □□□□



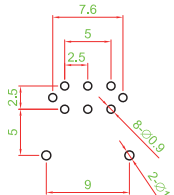
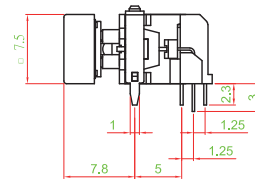
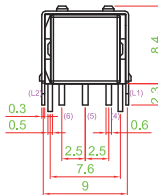
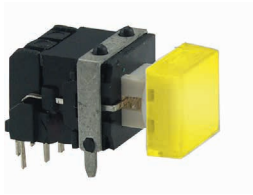
PS004-N22NRS1XT □□□□



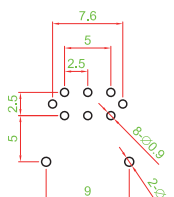
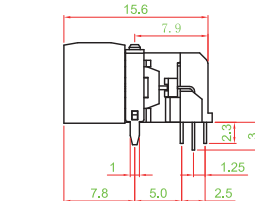
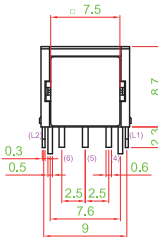
PS004-N22NRS1KT □□□□



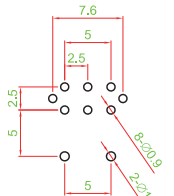
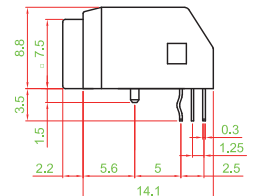
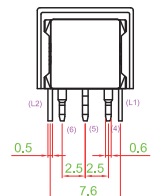
PS004-N22NR1S1XT □□□□



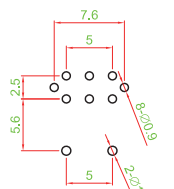
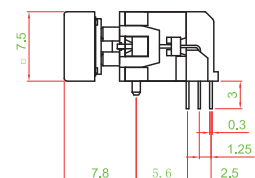
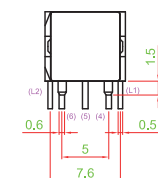
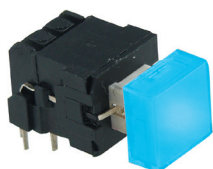
PS004-N22NR2S1KT □□□□



PS004-N22NR3S1KT □□□□



PS004-N22NR4S1XT □□□□

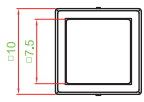




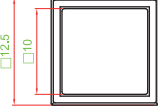
▶ CAP TYPE



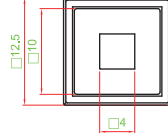
S1 TYPE



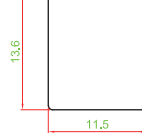
S2 TYPE



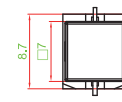
S2H TYPE



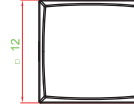
S3 TYPE



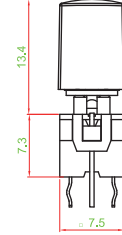
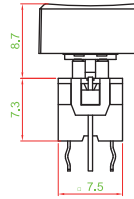
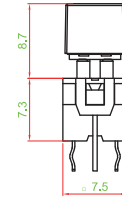
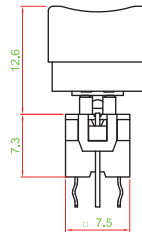
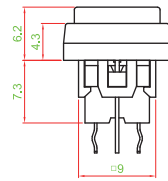
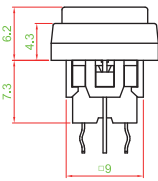
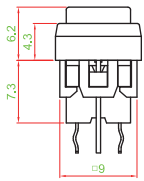
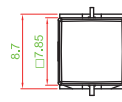
S4 TYPE



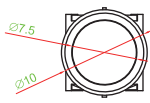
S5 TYPE



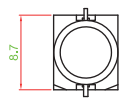
S6 TYPE



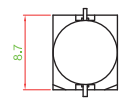
R1 TYPE



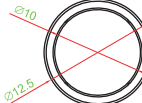
R1A TYPE



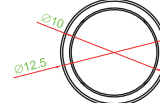
R1B TYPE



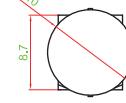
R2 TYPE



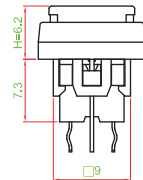
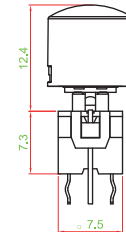
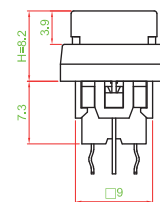
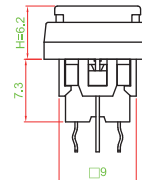
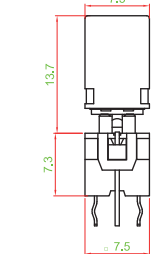
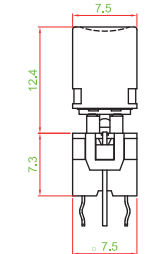
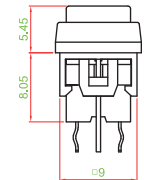
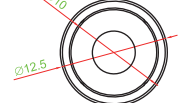
R2.1 TYPE



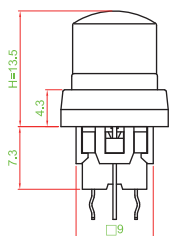
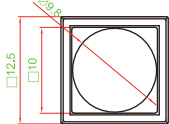
R2.2 TYPE



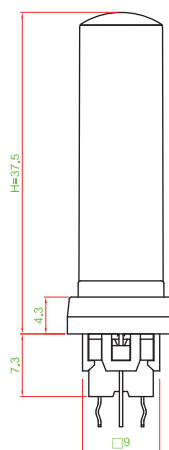
R2H TYPE



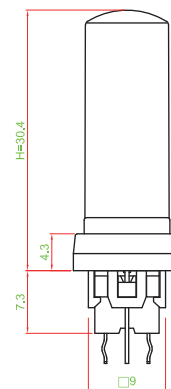
R3 TYPE



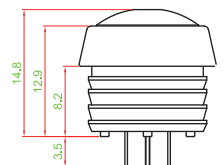
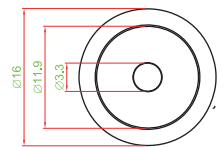
R3.1 TYPE



R3.2 TYPE



R4 TYPE



- TACT SWITCH
- PUSH BUTTON SWITCH
- LED TOUCH SENSOR SWITCH
- 5 DIRECTION NAVIGATION SWITCH WITH LED
- MEMBRANE SWITCH
- LED LIGHT BAR
- SLIDE SWITCH
- ROTARY SWITCH
- ROCKER SWITCH
- DETECT SWITCH
- ENCODER
- INTERRUPTER
- MINIATURE MICRO SWITCH
- TELEPHONE HOOK SWITCH
- DOOR SWITCH
- MINI SIZE SOCKET
- KNOB
- CAP SYMBOL

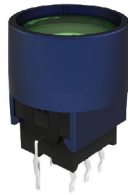
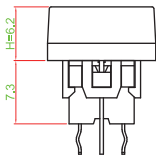
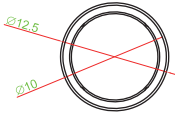


TACT SWITCH  
PUSH BUTTON SWITCH  
LED TOUCH SENSOR SWITCH  
5 DIRECTION NAVIGATION SWITCH WITH LED  
MEMBRANE SWITCH  
LED LIGHT BAR  
SLIDE SWITCH  
ROTARY SWITCH  
ROCKER SWITCH  
DETECT SWITCH  
ENCODER  
INTERRUPTER  
MINIATURE MICRO SWITCH  
TELEPHONE HOOK SWITCH  
DOOR SWITCH  
MINI SIZE SOCKET  
KNOB  
CAP SYMBOL

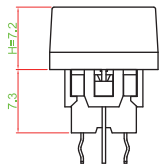
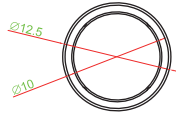
### ▶ CAP TYPE



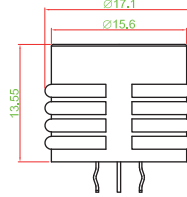
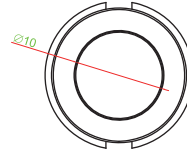
R2A TYPE



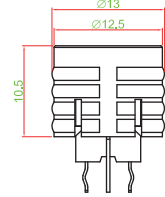
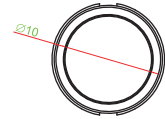
R2B TYPE



R2C TYPE



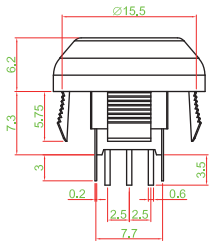
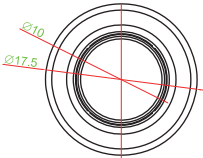
R2D TYPE



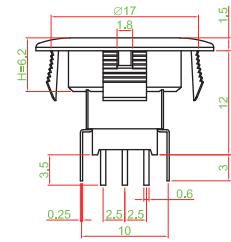
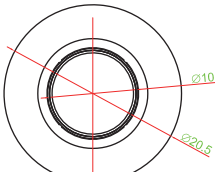
### ▶ CAP TYPE (PANEL MOUNT)



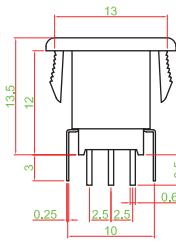
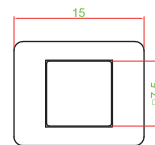
R2E TYPE



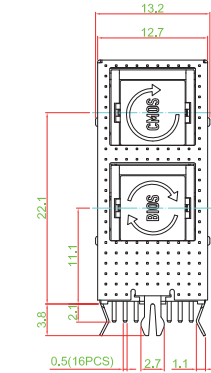
R2F/ R2.1F TYPE



S1A TYPE



PS004-T42NR5S1SK □□□□



▶ PANEL CUT OUT

Z	D
0 ~ 0.5	15.6 ~ 15.7
0.5 ~ 2.0	15.7 ~ 15.8
2.0 ~ 2.5	15.8 ~ 15.9
2.5 ~ 3.0	15.9 ~ 16.0
3.0 ~ 3.5	16.0 ~ 16.1

▶ PANEL CUT OUT

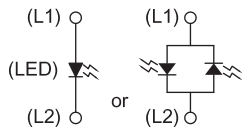
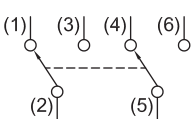
Z	D
0 ~ 0.5	17 ~ 17.1
0.5 ~ 2.0	17.1 ~ 17.2
2.0 ~ 2.5	17.2 ~ 17.3
2.5 ~ 3.0	17.3 ~ 17.4
3.0 ~ 3.5	17.5 ~ 17.6

CAP DIMENSION: H=6.2 mm  
R2F DIMENSION: H=6.2 mm  
R2.1F DIMENSION: H=8.2 mm

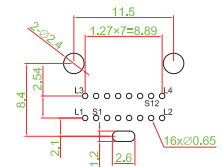
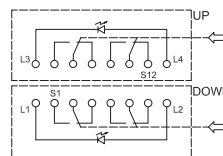
▶ PANEL CUT OUT

PANEL THICK	W
0.75 ~ 1.25	13.1 ~ 13.2
1.25 ~ 2.0	13.2 ~ 13.3
2.0 ~ 3.0	13.3 ~ 13.4

### ▶ CIRCUIT



TERMINAL TYPE : R5



# Mouser Electronics

Authorized Distributor

Click to View Pricing, Inventory, Delivery & Lifecycle Information:

[Well Buying:](#)

[PS004-L22NPS3XTURXX](#) [PS004-N22NR1S1XTUGXX](#) [PS004-L22NPR1AXTUGXX](#) [PS004-L22NPR1AXTURXX](#)  
[PS004-L22NPR1AXTUYXX](#) [PS004-L22NPS1KTUGXX](#) [PS004-L22NPS1KTURXX](#) [PS004-L22NPS1KTUYXX](#) [PS004-](#)  
[N22NPR1AXBUBXX](#) [PS004-N22NPR1KTUGXX](#) [PS004-N22NPR1AXTURUG](#) [PS004-N22NPR1AXRURXX](#) [PS004-](#)  
[N22NPR1AXTUYXX](#) [PS004-N22NPS1KTUGXX](#) [PS004-N22NPS1KTURXX](#) [PS004-N22NPS1KTUYXX](#) [PS004-](#)  
[L22NPR2EKTURUG](#)