



Feature :

Failure detection/protection design
External LED indicator design
LED driving with low current ; IP64
8 positions LED marquee design
Voltage of output can be customized

Application :

Automotive
Start engine button
Gear shifting module



SWITCH SPECIFICATIONS

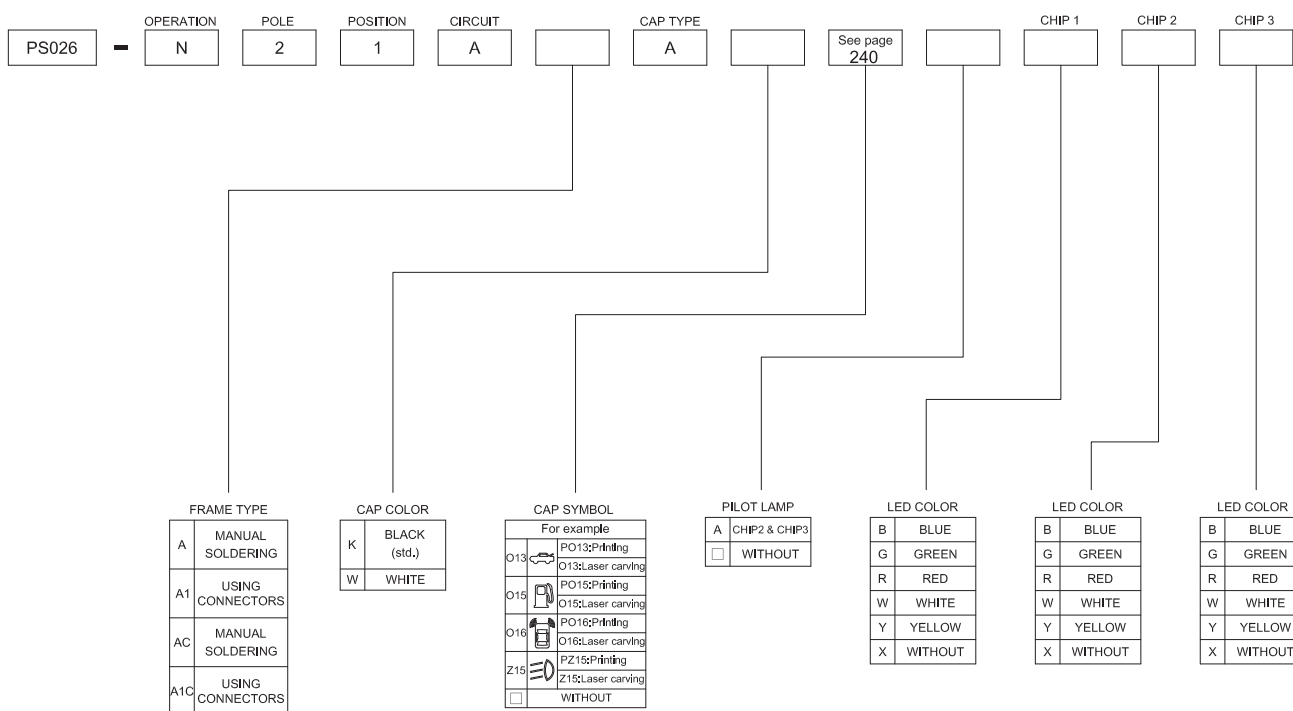
POLE - POSITION	OFF - <ON> for Momentary Type , DPST
CONTACT RATING	0.2A 12V DC
CONTACT RESISTANCE	200Ω MAX.
INSULATION RESISTANCE	100 MΩ min, 100 V DC
DIELECTRIC STRENGTH	Breakdown is not Allowable ; 250 V AC for 1 Minute
OPERATING FORCE	300 ± 80 gf
OPERATING LIFE	500,000 cycles
OPERATING TEMPERATURE RANGE	-40°C ~ 85°C
TOTAL TRAVEL	1.8 ± 0.3 mm

LED SPECIFICATIONS

Unit	Value / LED Color						
	Blue 5mA	Pure Green	Red	Yellow	Orange	Green	White
LUMINOUS INTENSITY@20mA I _v	mcd	40	200	280	80	280	30
Dominant Wavelength λ _D	nm	470	525	630	590	630	568
FORWARD VOLTAGE@20mA V _f	V	3.3	3.3	1.95	2	1.95	2.2

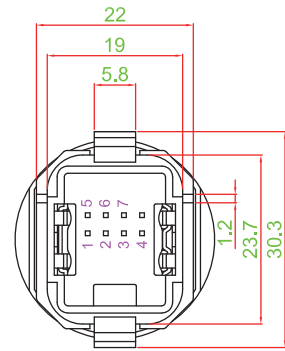
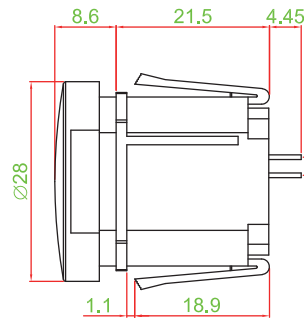
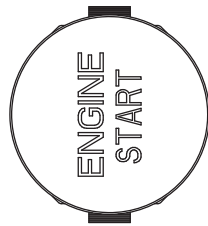
■ A single bin cannot be ordered, please contact us in advance if you need a particular bin sorting before placing your order to clarify the lead time, MOQ and pricing

HOW TO ORDER

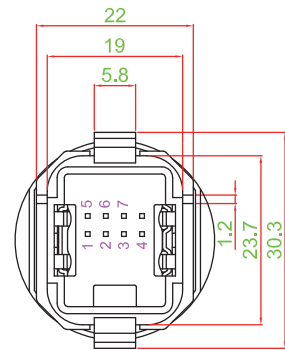
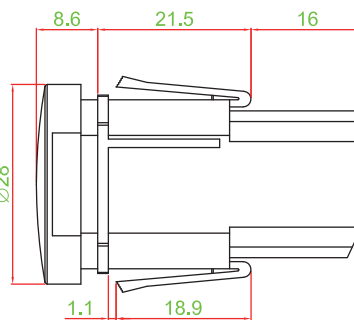
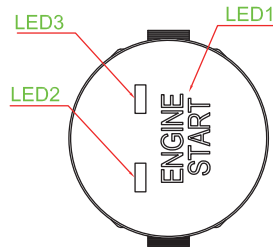


DIMENSION

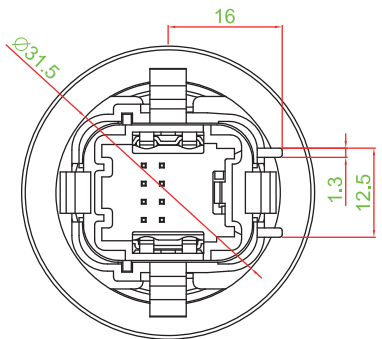
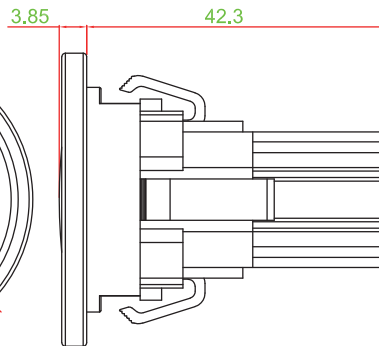
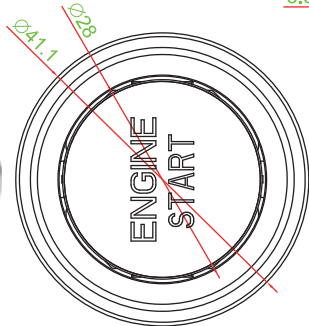
PS026-N21AAAKI23YYY



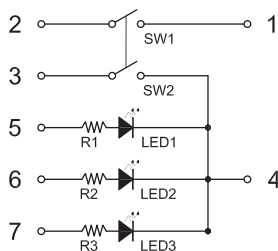
PS026-N21AA1AKI23AYGR



PS026-N21AA1CAKI23YGR

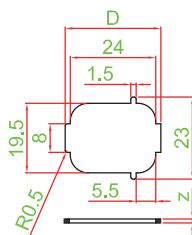


CIRCUIT



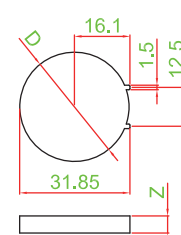
PANEL CUT OUT

FRAME A & A1



Z	D
1.3 ~ 1.4	26.9 ~ 27.6
1.4 ~ 1.6	27.6 ~ 28.1
1.6 ~ 1.8	28.1 ~ 28.7

FRAME AC & A1C



Z	D
5.0 ~ 5.3	31.5 ~ 32.0
5.3 ~ 5.6	32.0 ~ 32.6
5.6 ~ 6.0	32.6 ~ 33.3

Mouser Electronics

Authorized Distributor

Click to View Pricing, Inventory, Delivery & Lifecycle Information:

Well Buying:

PS026-N21AAKH21BBB