

Feature :



SPST, momentary function
Snap in panel mount installation
Bi-color LED illuminated available

Application :

- Automotive industry
- Computer products
- Office appliances
- Communication equipments

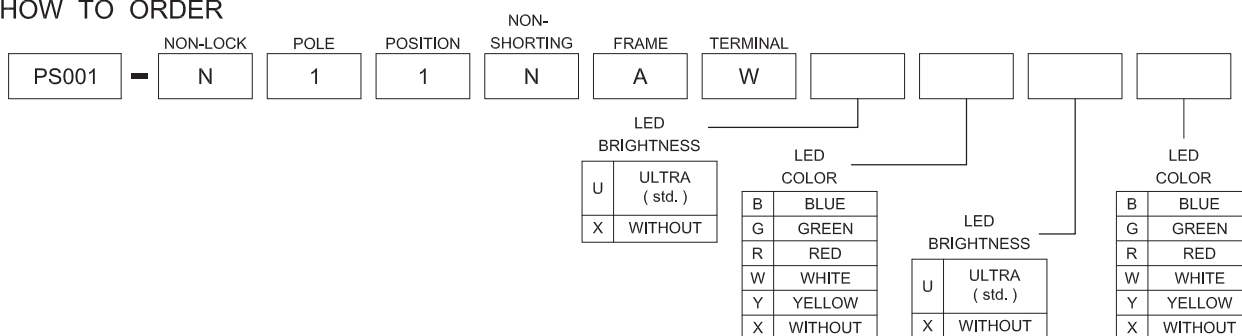


SWITCH SPECIFICATIONS	
POLE - POSITION	Momentary Type , SPST with LED
CONTACT RATING	30 V DC , 0.1 A
CONTACT RESISTANCE	50 mΩ MAX. 1.5 V DC ; 100 mA , by Method of Voltage DROP
INSULATION RESISTANCE	100 MΩ MIN. 500 V DC
DIELECTRIC STRENGTH	Breakdown is not Allowable ; 500 V AC for 1 Minute
OPERATING FORCE	250 ± 100 gf
OPERATING LIFE	50,000 cycles
OPERATING TEMPERATURE RANGE	-40°C ~ 85°C
TOTAL TRAVEL	1.3 ± 0.3 mm

LED SPECIFICATIONS								
<div><div>ATTENTION LEDs are Electrostatic Sensitive devices</div><div><div>(+) (-)</div></div></div> <td rowspan="2">Unit</td> <td colspan="7">Value / LED Color</td>	Unit	Value / LED Color						
		Blue	Pure Green	Red	Yellow	Orange	Green	White
LUMINOUS INTENSITY@20mA I _v	mcd	900	6500	900	1300	900	400	1200
Dominant Wavelength AD	nm	470	525	635	590	601	570	/
FORWARD VOLTAGE@20mA V _f	V	3.2	3.3	1.95	2	2.1	2.1	4

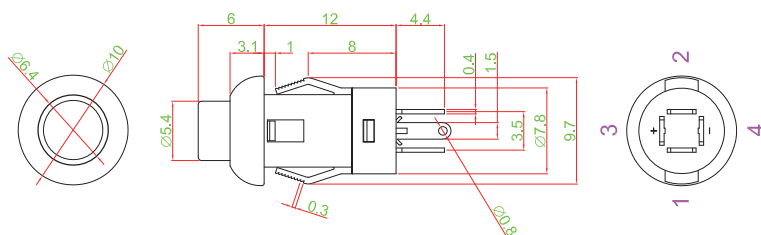
■ A single bin cannot be ordered, please contact us in advance if you need a particular bin sorting before placing your order to clarify the lead time, MOQ and pricing

► HOW TO ORDER

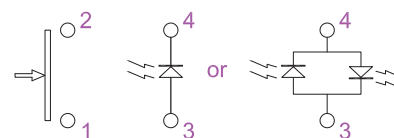


► DIMENSION

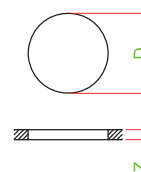
PS001-N11NAW□□□□



► CIRCUIT



▶ PANEL CUT OUT



Z	D
1.3 ~ 2.2	7.7 ~ 8.3
2.2 ~ 3.0	8.3 ~ 8.9
3.0 ~ 3.6	8.9 ~ 9.2



Mouser Electronics

Authorized Distributor

Click to View Pricing, Inventory, Delivery & Lifecycle Information:

[Well Buying:](#)

[PS001-N11NAWURXX-W50-1](#)