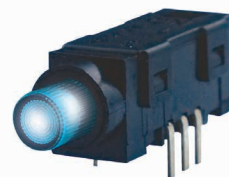


## Feature :

Bi-color LED illuminated available  
SPST  
Lock / non-lock function

## Application :

Computer products  
Office appliance  
Communication equipments

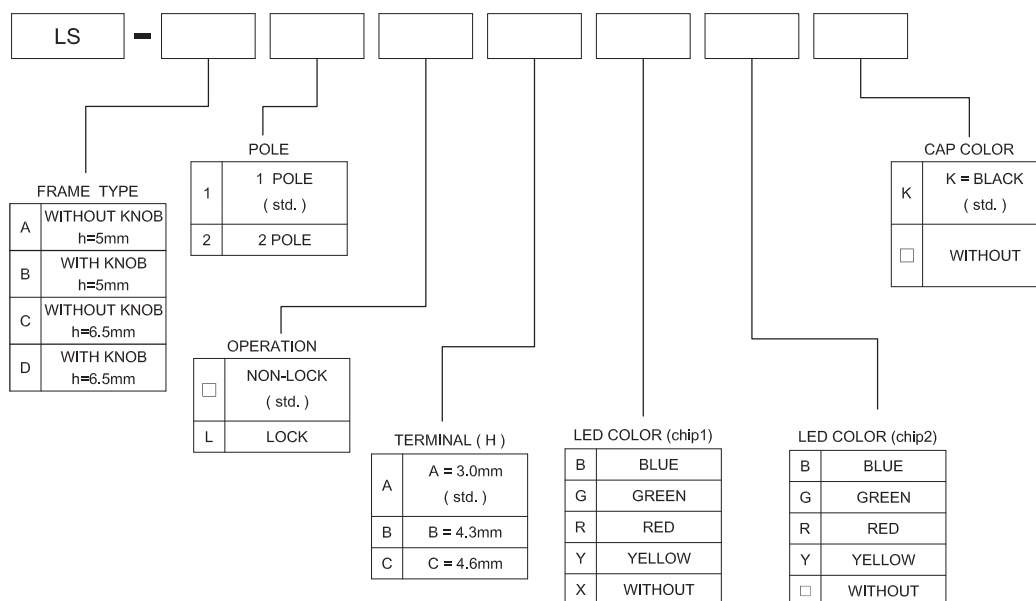


SWITCH SPECIFICATIONS	
POLE - POSITION	Momentary Type , LOCK Type with LED
CONTACT RATING	36 V DC , 0.2 A
CONTACT RESISTANCE	40 mΩ MAX. 1.5 V DC ; 100 mA , by Method of Voltage DROP
INSULATION RESISTANCE	100 MΩ MIN. 500 V DC
DIELECTRIC STRENGTH	Breakdown Is not Allowable ; 500 V AC for 1 Minute
OPERATING FORCE	NON-LOCK TYPE : 1POLE : 200±100 gf ; 2POLE : 300±100 gf LOCK TYPE : 1 & 2 POLE : 300 ± 100 gf
OPERATING LIFE	10,000 cycles
OPERATING TEMPERATURE RANGE	-40°C ~ 85°C
TOTAL TRAVEL	FULL TRAVEL : 2.4 ± 0.3 mm CONTACT TRAVEL : 1.6 ± 0.3 mm

LED SPECIFICATIONS		Value / LED Color						
 ATTENTION LEDs are Electrostatic Sensitive devices 	Unit							
		Blue	Pure Green	Red	Yellow	Orange	Green	White
LUMINOUS INTENSITY@20mA I <sub>v</sub>	mcd	900	6500	900	1300	900	400	1200
Dominant Wavelength λ <sub>D</sub>	nm	470	525	635	590	601	570	/
FORWARD VOLTAGE@20mA V <sub>f</sub>	V	3.2	3.3	1.95	2	2.1	2.1	4

■ A single bin cannot be ordered, please contact us in advance if you need a particular bin sorting before placing your order to clarify the lead time, MOQ and pricing

## ► HOW TO ORDER





TACT  
SWITCH

PUSH  
BUTTON  
SWITCH

LED TOUCH  
SENSOR  
SWITCH

5 DIRECTION  
NAVIGATION  
SWITCH  
WITH LED

MEMBRANE  
SWITCH

LED LIGHT  
BAR

SLIDE  
SWITCH

ROTARY  
SWITCH

ROCKER  
SWITCH

DETECT  
SWITCH

ENCODER

INTERRUPTER

MINIATURE  
MICRO  
SWITCH

TELEPHONE  
HOOK  
SWITCH

DOOR  
SWITCH

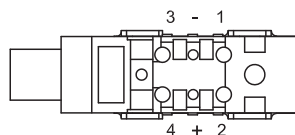
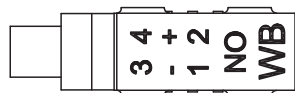
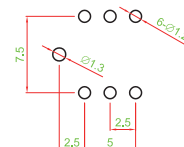
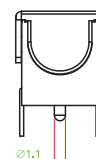
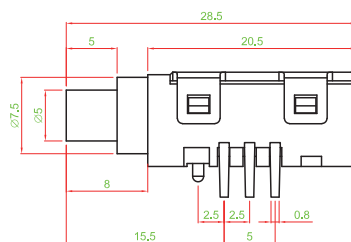
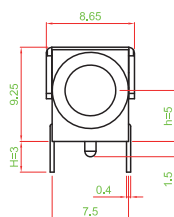
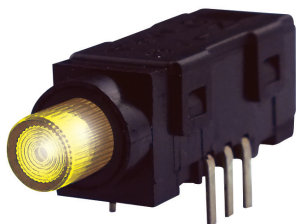
MINI SIZE  
SOCKET

KNOB

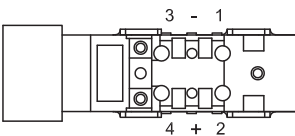
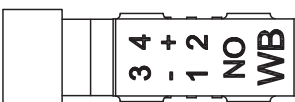
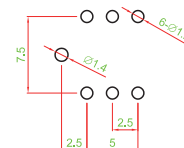
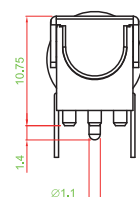
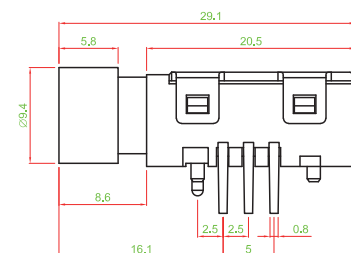
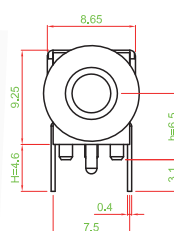
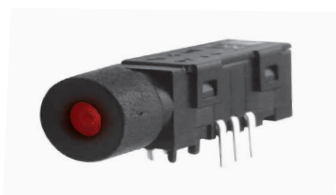
CAP  
SYMBOL

## DIMENSION

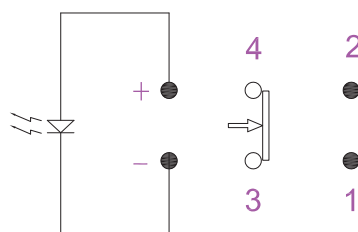
LS - A1A □ □



LS - D1C □ □ K



## CIRCUIT



# Mouser Electronics

Authorized Distributor

Click to View Pricing, Inventory, Delivery & Lifecycle Information:

[Well Buying:](#)

[LS-A1AB](#) [LS-A1AGY](#)