

Feature :

Bi-color LED illuminated available
SPST
Lock / non-lock function

Application :

Computer products
Office appliance
Communication equipments

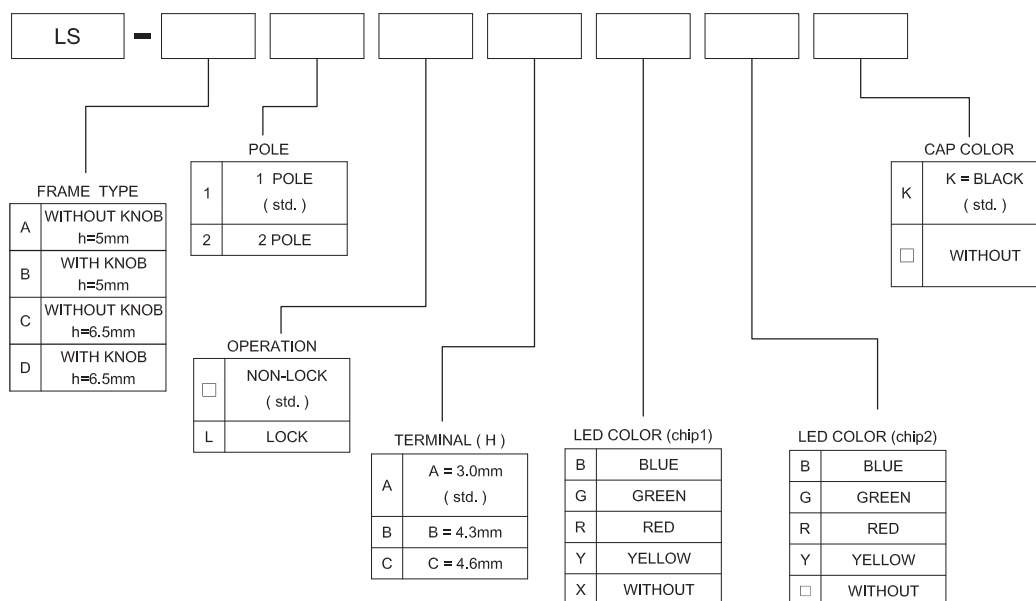


SWITCH SPECIFICATIONS	
POLE - POSITION	Momentary Type , LOCK Type with LED
CONTACT RATING	36 V DC , 0.2 A
CONTACT RESISTANCE	40 mΩ MAX. 1.5 V DC ; 100 mA , by Method of Voltage DROP
INSULATION RESISTANCE	100 MΩ MIN. 500 V DC
DIELECTRIC STRENGTH	Breakdown Is not Allowable ; 500 V AC for 1 Minute
OPERATING FORCE	NON-LOCK TYPE : 1POLE : 200±100 gf ; 2POLE : 300±100 gf LOCK TYPE : 1 & 2 POLE : 300 ± 100 gf
OPERATING LIFE	10,000 cycles
OPERATING TEMPERATURE RANGE	-40°C ~ 85°C
TOTAL TRAVEL	FULL TRAVEL : 2.4 ± 0.3 mm CONTACT TRAVEL : 1.6 ± 0.3 mm

LED SPECIFICATIONS		Value / LED Color						
 ATTENTION LEDs are Electrostatic Sensitive devices 	Unit							
		Blue	Pure Green	Red	Yellow	Orange	Green	White
LUMINOUS INTENSITY@20mA I _v	mcd	900	6500	900	1300	900	400	1200
Dominant Wavelength λ _D	nm	470	525	635	590	601	570	/
FORWARD VOLTAGE@20mA V _f	V	3.2	3.3	1.95	2	2.1	2.1	4

■ A single bin cannot be ordered, please contact us in advance if you need a particular bin sorting before placing your order to clarify the lead time, MOQ and pricing

► HOW TO ORDER





TACT
SWITCH

PUSH
BUTTON
SWITCH

LED TOUCH
SENSOR
SWITCH

5 DIRECTION
NAVIGATION
SWITCH
WITH LED

MEMBRANE
SWITCH

LED LIGHT
BAR

SLIDE
SWITCH

ROTARY
SWITCH

ROCKER
SWITCH

DETECT
SWITCH

ENCODER

INTERRUPTER

MINIATURE
MICRO
SWITCH

TELEPHONE
HOOK
SWITCH

DOOR
SWITCH

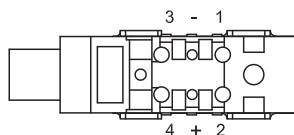
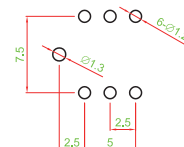
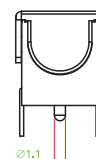
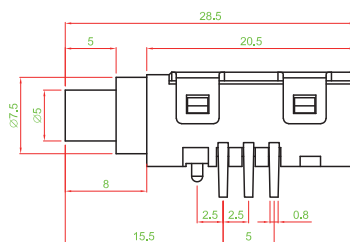
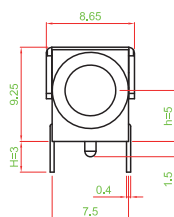
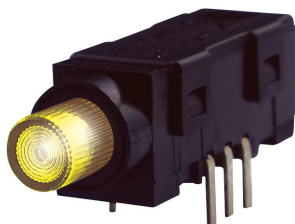
MINI SIZE
SOCKET

KNOB

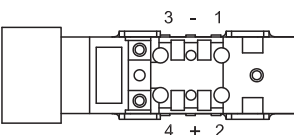
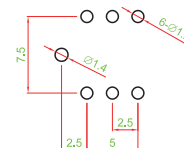
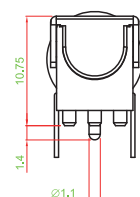
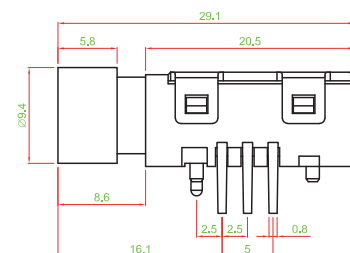
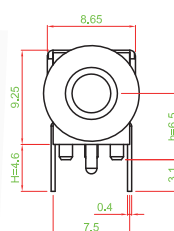
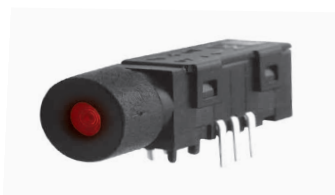
CAP
SYMBOL

DIMENSION

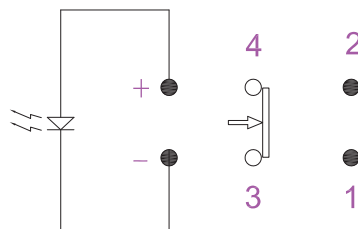
LS - A1A □ □



LS - D1C □ □ K



CIRCUIT



Mouser Electronics

Authorized Distributor

Click to View Pricing, Inventory, Delivery & Lifecycle Information:

Well Buying:

[LS-B1ABK](#) [LS-B1AGRK](#)