

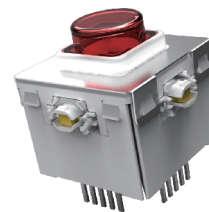


Feature :



5 direction navigation cap
Panel mount and PCB module installation
LED illumination

Application :

Consumer products
Computer products
Instrumentation
Communication equipments
Home appliances

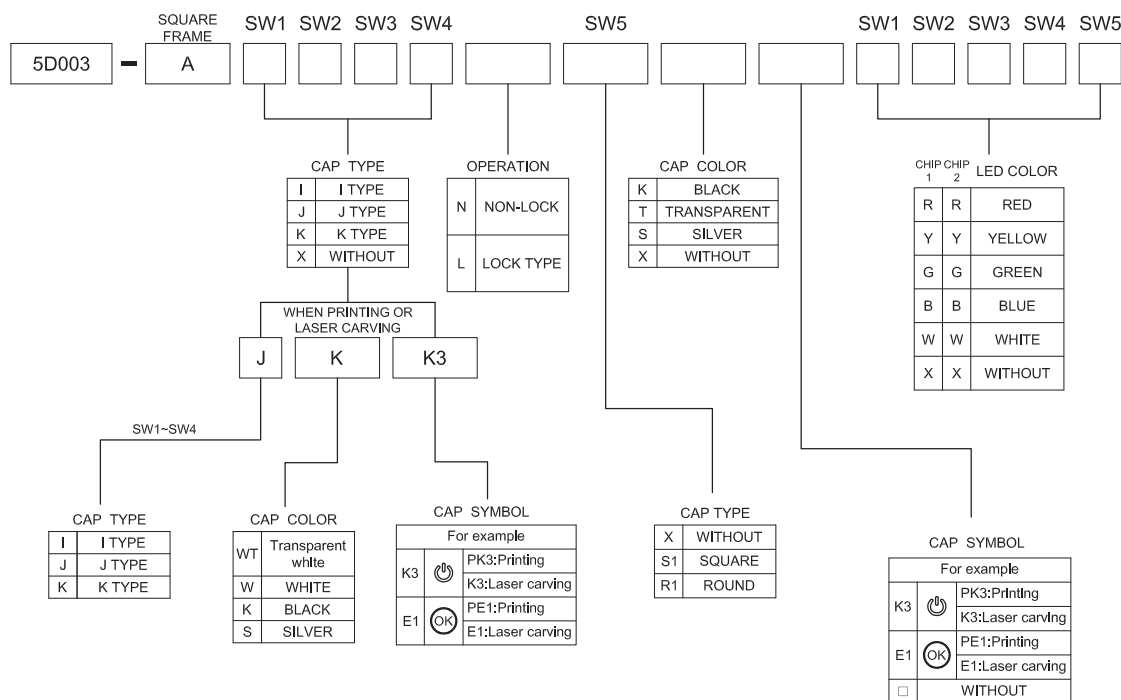


SWITCH SPECIFICATIONS	
POLE - POSITION	TACT SWITCH : 1P1T PUSH SWITCH : 2P2T (std.)
CONTACT RATING	12 V DC , 50 mA
CONTACT RESISTANCE	TACT SWITCH : 500 mΩ MAX. 5 V DC ; 10 mA PUSH SWITCH : 100 mΩ MAX. 1.5 V DC ; 100 mA
INSULATION RESISTANCE	TACT SWITCH : 100 MΩ MIN. 100 V DC PUSH SWITCH : 100 MΩ MIN. 500 V DC
DIELECTRIC STRENGTH	Breakdown is not Allowable ; TACT SWITCH : 250 V AC for 1 Minute PUSH SWITCH : 500 V AC for 1 Minute
OPERATING FORCE	TACT SWITCH : 160 ± 50 gf PUSH SWITCH : 250 ± 50 gf
OPERATING LIFE	50,000 cycles
OPERATING TEMPERATURE RANGE	-40°C ~ 85°C

LED SPECIFICATIONS								
 ATTENTION LEDs are Electrostatic Sensitive devices  (+) ○ (○) (-)	Unit	Value / LED Color						
		Blue	Pure Green	Red	Yellow	Orange	Green	White
LUMINOUS INTENSITY@20mA I _v	mcd	80	150	220	180	320	50	450
Dominant Wavelength λ _D	nm	465	525	630	590	601	567	/
FORWARD VOLTAGE@20mA V _f	V	3.3	3.2	1.95	2	2.1	2.1	3.3

■ A single bin cannot be ordered, please contact us in advance if you need a particular bin sorting before placing your order to clarify the lead time, MOQ and pricing

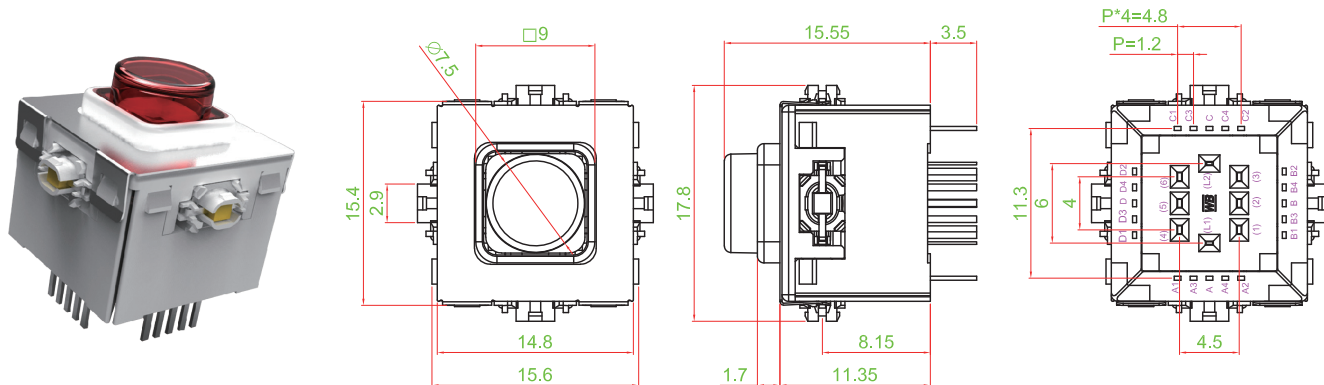
► HOW TO ORDER





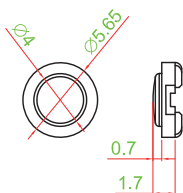
DIMENSION

5D003-AXXXXLS1WBXBXBXB

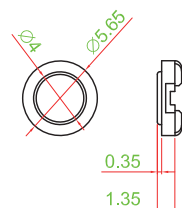


CAP TYPE

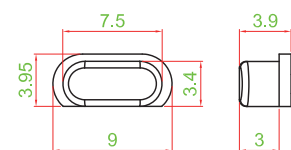
I TYPE



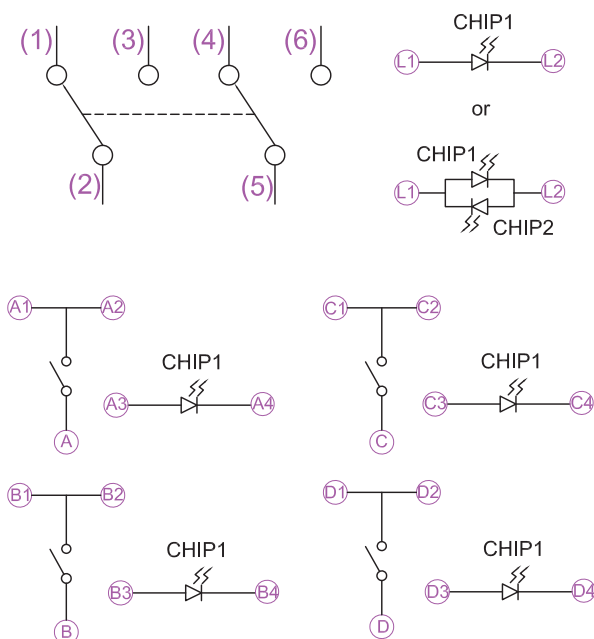
J TYPE



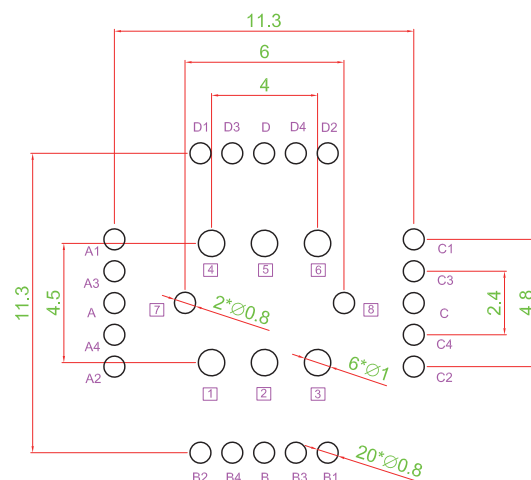
K TYPE



CIRCUIT



P.C.B. LAYOUT



Mouser Electronics

Authorized Distributor

Click to View Pricing, Inventory, Delivery & Lifecycle Information:

Well Buying:

[5D003-AXXXLR1TGXGXGXGXRX](#)