


| [LLL] LENGTH TABLE                   |           |                |
|--------------------------------------|-----------|----------------|
| ASSY LENGTH [LLL]                    | [H] MTG X | [C] OPITON X/2 |
| 280                                  | 0.900     | 0.450          |
| 330                                  | 1.400     | 0.700          |
| 380                                  | 1.900     | 0.950          |
| 430                                  | 2.400     | 1.200          |
| 480                                  | 2.900     | 1.450          |
| 530                                  | 3.400     | 1.700          |
| 580                                  | 3.900     | 1.950          |
| 630                                  | 4.400     | 2.200          |
| 680                                  | 4.900     | 2.450          |
| 730                                  | 5.400     | 2.700          |
| 780                                  | 5.900     | 2.950          |
| OTHER LENGTHS AVAILABLE UPON REQUEST |           |                |

| [H] MOUNTING TABLE   |  |
|--|--|
| DASH NO  | DESCRIPTION  |
| A  | NO MOUNTING HOLES  |
|  R | $\varnothing 0.068/0.073$ THRU<br>$\varnothing 0.213 \times 100^\circ$ |
| T  | #0-80 UNF-2B THREADS   |
| S  | #2-56 UNC-2B THREADS   |
| U  | M2 X 0.4 - 6H THREADS  |
| M  | M2.5 X 0.45 - 6H THREADS   |
| THREAD DEPTH .215  |  |



| [F] FINISH TABLE |   |
|------------------|---|
| DASH NO          | DESCRIPTION   |
| A                | NO FINISH   |
| G                | CHROMATE PER MIL-DTL-5541, CLASS 1A, TYPE I (GOLD)                                      |
| T                | TRIVALENT CHROMATE PER MIL-DTL-5541, CLASS 1A, TYPE II (CLEAR), RoHS COMPLIANT          |
| B                | BLACK ANODIZE PER MIL-A-8625, TYPE II, CLASS 2  |
| H                | HARD BLACK ANODIZE PER MIL-A-8625, TYPE III, CLASS 2                                    |
| D                | HARD BLACK ANODIZE PER MIL-A-8625, TYPE III, CLASS 2 WITH DRY FILM LUBE PER MIL-L-46010 |
| E                | ELECTROLESS NICKEL PER MIL-C-26074, CLASS 4, GRADE B, BRIGHT                            |
| *N               | NADCAP COMPLIANT (EX: 'BN' - BLACK ANODIZE, NADCAP)                                     |

#### NOTES:

-  SHIP AS COMPLETE ASSEMBLY IN RELAXED STATE  
(IF RIVET MOUNTING OPTION IS SELECTED, SHIP UNASSEMBLED)

**EXAMPLE**  
426C-480SSB-CKP  
426C WEDGELOCK ASSEMBLY  
4.80" LENGTH, 2-56 MTG, 3/32 SOCKET HEAD, BLACK ANODIZE  
CENTER MTG HOLE, CAPTIVE SCREW, LOCK PATCH

PART DEFINITION  
(REQUIRED)

PART NUMBER OPTIONS  
(NOT REQUIRED)

#### PART NUMBER CODE

426C-[LLL][H][D][F]-[C][K][P][V]

SERIES PN

ASSY LENGTH  
(SEE LENGTH TABLE)

MOUNTING HOLE  
(SEE MOUNTING TABLE)

DRIVE SCREW  
'M' FOR M2.5 HEX  
'S' FOR 3/32 HEX

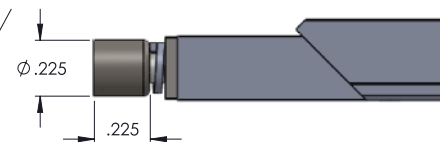
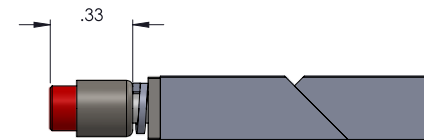
FINISH  
(SEE FINISH TABLE)

ADD 'V' FOR OPTIONAL  
VISUAL INDICATOR

ADD 'P' FOR OPTIONAL  
LOCK PATCH

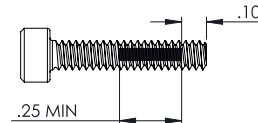
ADD 'K' FOR OPTIONAL  
CAPTIVE SCREW FEATURE

ADD 'C' FOR OPTIONAL  
CENTER MOUNTING HOLE



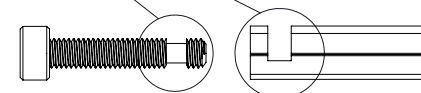
#### 'V' OPTION

VISUALLY CONFIRMS LOCKED IN PLACE  
WHEN RED SCREW HEAD IS CONCEALED



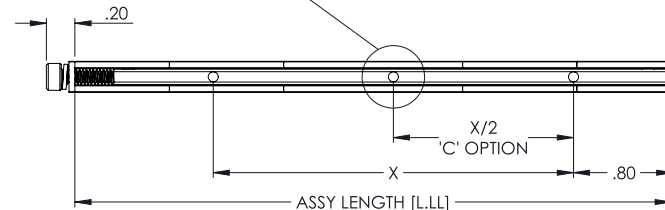
#### 'P' OPTION

NYLON PATCH PER MIL-F-18240  
PROVIDES ADDITIONAL RESISTANCE TO  
SHOCK AND VIBRATION



#### 'K' OPTION

CAPTIVATES SCREW BY FREE SPINNING WHEN  
WEDGELOCK IS IN RELAXED POSITION



#### BOTTOM VIEW

|                                   |                    |                   |
|-----------------------------------|--------------------|-------------------|
| SIZE<br><b>B</b>                  | DWG NO.<br>426C-DS | REV<br><b>21A</b> |
| CAGE CODE:<br>3E7U8               | SCALE 1:1          | SHEET 2 OF 2      |
| MODEL INFO:<br>426C Series Master |                    |                   |

# Mouser Electronics

Authorized Distributor

Click to View Pricing, Inventory, Delivery & Lifecycle Information:

## Wakefield Thermal:

[426C-380SSE-KP](#) [426C-480SSB](#) [426C-330SSE-CP](#) [426C-380SSE-CP](#) [426C-430SSE-CP](#) [426C-480SSE-CP](#)  
[426C-280MMB](#) [426C-280MMB-C](#) [426C-280MMB-CKP](#) [426C-280MMB-CP](#) [426C-280MMB-K](#) [426C-280MMB-KP](#)  
[426C-280MMB-P](#) [426C-280MME](#) [426C-280MME-C](#) [426C-280MME-CKP](#) [426C-280MME-CP](#) [426C-280MME-K](#)  
[426C-280MME-KP](#) [426C-280MME-P](#) [426C-280MMG](#) [426C-280MMG-C](#) [426C-280MMG-CKP](#) [426C-280MMG-CP](#)  
[426C-280MMG-K](#) [426C-280MMG-KP](#) [426C-280MMG-P](#) [426C-280MMH](#) [426C-280MMH-C](#) [426C-280MMH-CKP](#)  
[426C-280MMH-CP](#) [426C-280MMH-K](#) [426C-280MMH-KP](#) [426C-280MMH-P](#) [426C-280SSB](#) [426C-280SSB-C](#) [426C-](#)  
[280SSB-CKP](#) [426C-280SSB-CP](#) [426C-280SSB-K](#) [426C-280SSB-KP](#) [426C-280SSB-P](#) [426C-280SSE](#) [426C-](#)  
[280SSE-C](#) [426C-280SSE-CKP](#) [426C-280SSE-CP](#) [426C-280SSE-K](#) [426C-280SSE-KP](#) [426C-280SSE-P](#) [426C-](#)  
[280SSG](#) [426C-280SSG-C](#) [426C-280SSG-CKP](#) [426C-280SSG-CP](#) [426C-280SSG-K](#) [426C-280SSG-KP](#) [426C-](#)  
[280SSG-P](#) [426C-280SSH](#) [426C-280SSH-C](#) [426C-280SSH-CKP](#) [426C-280SSH-CP](#) [426C-280SSH-K](#) [426C-280SSH-](#)  
[KP](#) [426C-280SSH-P](#) [426C-280UMB-C](#) [426C-280UMB-CKP](#) [426C-280UMB-CP](#) [426C-280UMB-K](#) [426C-280UMB-KP](#)  
[426C-280UMB-P](#) [426C-280UME](#) [426C-280UME-C](#) [426C-280UME-CKP](#) [426C-280UME-CP](#) [426C-280UME-K](#)  
[426C-280UME-KP](#) [426C-280UME-P](#) [426C-280UMG](#) [426C-280UMG-C](#) [426C-280UMG-CKP](#) [426C-280UMG-CP](#)  
[426C-280UMG-K](#) [426C-280UMG-KP](#) [426C-280UMG-P](#) [426C-280UMH](#) [426C-280UMH-C](#) [426C-280UMH-CKP](#)  
[426C-280UMH-CP](#) [426C-280UMH-K](#) [426C-280UMH-KP](#) [426C-280UMH-P](#) [426C-330MMB](#) [426C-330MMB-C](#) [426C-](#)  
[330MMB-CKP](#) [426C-330MMB-CP](#) [426C-330MMB-K](#) [426C-330MMB-KP](#) [426C-330MMB-P](#) [426C-330MME](#) [426C-](#)  
[330MME-C](#) [426C-330MME-CKP](#) [426C-330MME-CP](#)