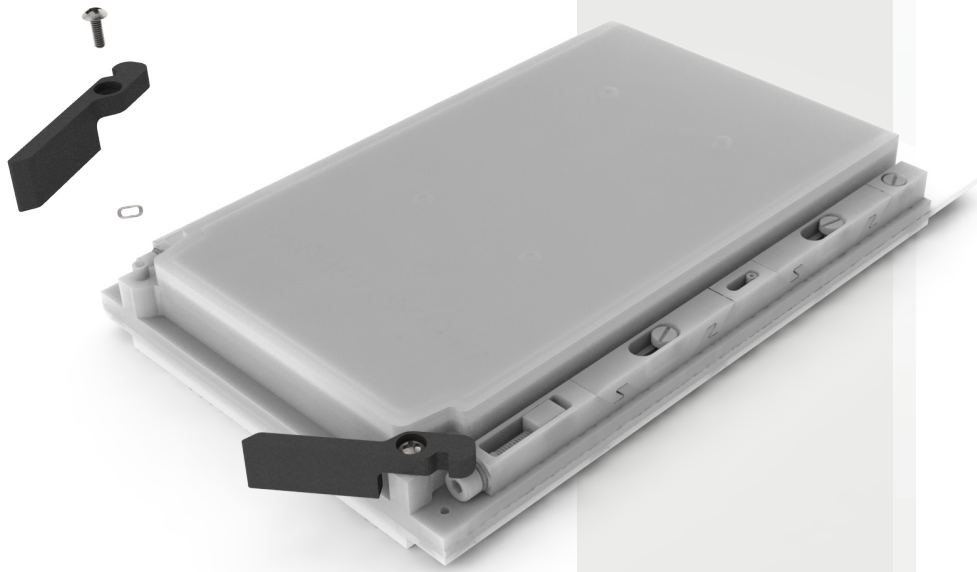


452E POST EJECTOR DATA SHEET

The 452E ejectors are a ready to go insertion and extraction solution for embedded computing heat frames. The 452E can adapt to 3U or 6U frames through material and length options. The slim design allows for maximum PCB component space. Designed for VITA 48 applications this ejector is ready to be inserted into any design.



FEATURES

- Designed for use in VITA 48 applications
- Mechanical advantage: 2.7x - 3.9x
- Material: 6061-T6 aluminum, or 7075-T6 aluminum
- Nominal ejection distance: .23"
- Maximum injection/ejection output 34-110 lbs
- Special lengths, finish, and other design options available upon request

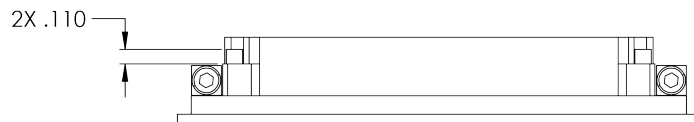
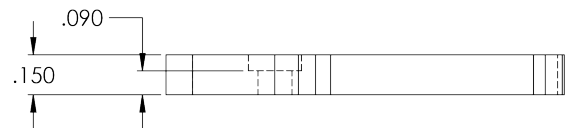
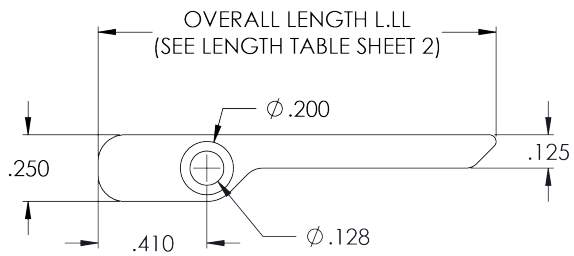
HARDWARE INCLUDED

- Extra-wide truss head no. 1 Philips screw, M2 x 6mm l, stainless steel, passivate
Recommended screw torque is 3.5 in-lbs (40 N-cm)
- 18-8 SS .190" OD wave washer

For complete
heatframe
assembly
or other
component
items,

**CONTACT
WAKEFIELD**

GENERAL DIMENSIONS



RECOMMENDED EJECTOR POST HEIGHT
SCALE 1 : 1

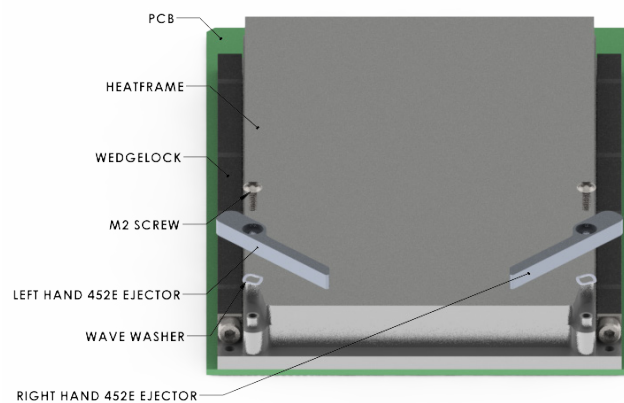
2X M2X0.4 - 6H ∇ .250 MIN

2X $\phi .122^{+.000}_{-.005}$

2X .145

2X .430

RECOMMENDED HOLE LOCATIONS
FROM PCB EDGE
SCALE 1 : 1



NEED DESIGN ASSISTANCE?

Wakefieldthermal.com



DESIGN OPTIONS

LENGTH AND MATERIAL TABLE						
[LLL]	L.LL (IN.) OVERALL LENGTH	[M] MATERIAL CODE	MATERIAL	RECOMMENDED FOR	MECHANICAL ADVANTAGE	MAX INJECTION/EJECTION OUTPUT FORCE
150	1.50	U	6061-T6 ALUMINUM	3U-BOARDS	2.7x	60 LBS
150	1.50	V	7075-T6 ALUMINUM			110 LBS
200	2.00	U	6061-T6 ALUMINUM	6U-BOARDS	3.9x	34 LBS
200	2.00	V	7075-T6 ALUMINUM			62 LBS

PART NUMBER CODE

452E-[LLL][M][H][F]-[J][T][C]

SERIES PN

LENGTH

MATERIAL

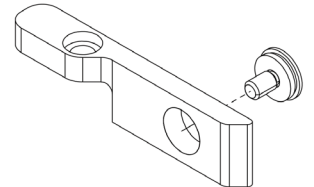
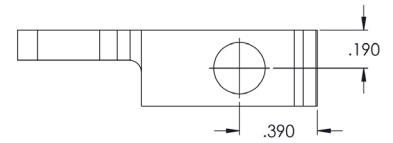
HAND CONFIGURATION
'R' FOR RIGHT HAND
'L' FOR LEFT HAND

FINISH

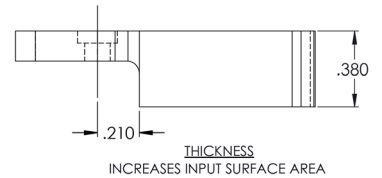
OPTIONAL RETENTION
ADD 'M' FOR M3 THREADS
ADD 'S' FOR 4-40 THREADS

ADD 'T' FOR OPTIONAL
THICKNESS

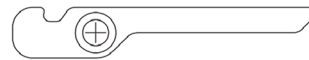
ADD 'J' FOR OPTIONAL
CARD INJECTION FEATURE



CAPTIVE SCREW RETENTION
REDUCES COMPONENT RATTLING DURING OPERATION
REQUIRES THICKNESS [T]



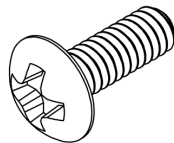
THICKNESS
INCREASES INPUT SURFACE AREA



CARD INJECTION FEATURE
AVOIDS INTERFERENCE WITH INJECTION SURFACE

[F] FINISH TABLE	
DASH NO	DESCRIPTION
A	NO FINISH
G	CHROMATE PER MIL-DTL-5541, CLASS 1A, TYPE I (GOLD)
T	TRIVALENT CHROMATE PER MIL-DTL-5541, CLASS 1A, TYPE II (CLEAR), RoHS COMPLIANT
B	BLACK ANODIZE PER MIL-A-8625, TYPE II, CLASS 2
H	HARD BLACK ANODIZE PER MIL-A-8625, TYPE III, CLASS 2
E	ELECTROLESS NICKEL PER MIL-C-26074, CLASS 4, GRADE B, BRIGHT
*N	NADCAP COMPLIANT (EX: 'BN' - BLACK ANODIZE, NADCAP)

INCLUDED HARDWARE



NO. 1 PHILLIPS M2X 6MM SCREW
SCALE 4 : 1



.190" OD WAVE WASHER
SCALE 4 : 1

**CONTACT
WAKEFIELD**

603.635.2800



5 STEP THERMAL ENGINEERING GUIDE From Concept To Cooling

COOLVATION provides thermal management engineering services to improve products' thermal performance while applying cost effective solutions to eliminate unnecessary manufacturing costs. COOLVATION is a seamless resource extension for our customers' thermal & mechanical engineering teams from ideation to lab testing.



Customer Thermal Challenge

Physical limitations
Power constraints
Air flow/ fluid conditions
Environmental conditions
Component specifications
Define ideal state



Execution

Concept analysis
(CFD-ansys/ ice pack, fin
optimizations software)
Solid model
Analysis & verification
Cost analysis



Global Manufacturing

Global manufacturing facilities
Global warehousing
Global labs to support future program

01
STEP

02
STEP



Collaboration

Review conditions
Statement of work to customer
Historical consideration along
with cutting edge technologies to
provide cost effective solution



Solution & Verification

Dedicated new product
development center
Prototype
Physical thermal lab testing
Proven manufacturability

04
STEP

05
STEP

Mouser Electronics

Authorized Distributor

Click to View Pricing, Inventory, Delivery & Lifecycle Information:

[Wakefield Thermal:](#)

[452E-150ULB-J](#) [452E-150URB-J](#) [452E-150VLB-J](#) [452E-150VRB-J](#) [452E-200ULB-J](#) [452E-200ULB-JT](#) [452E-200URB-J](#) [452E-200URB-JT](#) [452E-200VLB-J](#) [452E-200VLB-JT](#) [452E-200VRB-J](#) [452E-200VRB-JT](#)