


- FEATURES**
- DESIGNED FOR HEAVY SHOCK AND VIBRATION.
 - UNIFORM CLAMPING FORCE AND HIGH THERMAL TRANSFER.
 - NARROW WIDTH FOR MAXIMUM PCB COMPONENT AREA.
 - LOW PROFILE DESIGN ALLOWS FOR DECREASED SLOT PITCH.
 - CAPTIVATED REAR WEDGE.
 - LIGHT WEIGHT = ASSEMBLY LENGTH X .085 OZ [2.41 G] OR [.95 G/CM]
 - SPECIAL LENGTHS, FINISH, AND OTHER DESIGN OPTIONS AVAILABLE UPON REQUEST.

MATERIAL
MOUNTING BAR AND WEDGES: ALUMINUM 6063-T6.
ALL OTHER HARDWARE: STAINLESS STEEL, PASSIVATED.


PARTS ARE SHIPPED AS COMPLETE ASSEMBLY EXCEPT FOR RIVET MOUNT OPTION (SEE SHEET 2)
RECOMMENDED DRIVE SCREW TORQUE IS 6 IN-LBS (68 N-CM)

* CONTACT WAKEFIELD FOR COMPLETE HEATFRAME ASSEMBLY OR OTHER COMPONENT ITEMS

THIS DOCUMENT, IN ITS ENTIRETY, CONTAINS INFORMATION WHICH IS CONFIDENTIAL AND PROPRIETARY TO WAKEFIELD THERMAL. DOCUMENTS MARKED WITH PROPRIETARY ARE NOT TO BE USED, DUPLICATED OR DISCLOSED WITHOUT PRIOR WRITTEN PERMISSION OF AN OFFICER OR DULY AUTHORIZED REPRESENTATIVE OF WAKEFIELD THERMAL OR AS MAY BE PROVIDED IN A WRITTEN NON-DISCLOSURE AGREEMENT BETWEEN THE PARTIES.

CAD GENERATED DRAWING				<div> WAKEFIELD THERMAL 2910 INDUSTRIAL DRIVE, RALEIGH, NC 27609</div>				
TOLERANCES UNLESS OTHERWISE SPECIFIED: X.XX ± 0.010" X.XXX ± 0.005" ANGULAR ± 1° MACHINED SURFACES ⁶³ INTERPRET GEOMETRIC TOLERANCES PER: ASME Y14.5M- 1994 MATERIAL: FINISH: DO NOT SCALE DRAWING		NAME	DATE					TITLE: 426C WEDGELOCK DATASHEET 0.260 X 0.250
	DRAWN	MRP	5/11/2021					
	CHECKED	.	.					
	ENG APPR.	MRP	5/11/2021					
	MFG APPR.	.	.					
Q.A.			.	.	REV 21A			
SIZE		DWG NO.						
B		426C-DS						
CAGE CODE:		3E7U8		SCALE 1:1		SHEET 1 OF 2		

[LLL] LENGTH TABLE		
ASSY LENGTH [LLL]	[H] MTG X	[C] OPITON X/2
280	0.900	0.450
330	1.400	0.700
380	1.900	0.950
430	2.400	1.200
480	2.900	1.450
530	3.400	1.700
580	3.900	1.950
630	4.400	2.200
680	4.900	2.450
730	5.400	2.700
780	5.900	2.950
OTHER LENGTHS AVAILABLE UPON REQUEST		

[H] MOUNTING TABLE	
DASH NO	DESCRIPTION
A	NO MOUNTING HOLES
 R	Ø0.068/0.073 THRU ✓ Ø0.213 X 100°
T	#0-80 UNF-2B THREADS
S	#2-56 UNC-2B THREADS
U	M2 X 0.4 - 6H THREADS
M	M2.5 X 0.45 - 6H THREADS
THREAD DEPTH .215	

[F] FINISH TABLE	
DASH NO	DESCRIPTION
A	NO FINISH
G	CHROMATE PER MIL-DTL-5541, CLASS 1A, TYPE I (GOLD)
T	TRIVALENT CHROMATE PER MIL- DTL-5541, CLASS 1A, TYPE II (CLEAR), RoHS COMPLIANT
B	BLACK ANODIZE PER MIL-A-8625, TYPE II, CLASS 2
H	HARD BLACK ANODIZE PER MIL-A-8625, TYPE III, CLASS 2
D	HARD BLACK ANODIZE PER MIL-A-8625, TYPE III, CLASS 2 WITH DRY FILM LUBE PER MIL-L-46010
E	ELECTROLESS NICKEL PER MIL-C-26074, CLASS 4, GRADE B, BRIGHT
*N	NADCAP COMPLIANT (EX: 'BN' - BLACK ANODIZE, NADCAP)

EXAMPLE

426C-480SSB-CKP
426C WEDGELOCK ASSEMBLY
4.80" LENGTH, 2-56 MTG, 3/32 SOCKET HEAD, BLACK ANODIZE
CENTER MTG HOLE, CAPTIVE SCREW, LOCK PATCH

PART NUMBER CODE
426C-[LLL][H][D][F]-[C][K][P][V]

PART DEFINITION
(REQUIRED)

PART NUMBER OPTIONS
(NOT REQUIRED)

SERIES PN

ASSY LENGTH
(SEE LENGTH TABLE)

MOUNTING HOLE
(SEE MOUNTING TABLE)

DRIVE SCREW
'M' FOR M2.5 HEX
'S' FOR 3/32 HEX

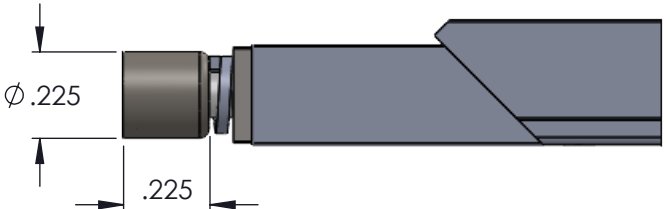
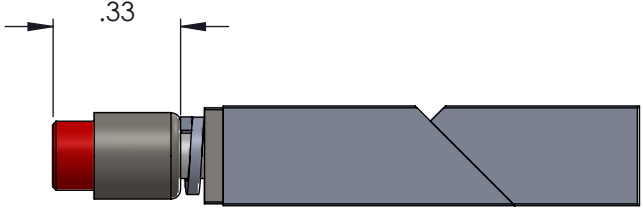
FINISH
(SEE FINISH TABLE)

ADD 'V' FOR OPTIONAL
VISUAL INDICATOR

ADD 'P' FOR OPTIONAL
LOCK PATCH

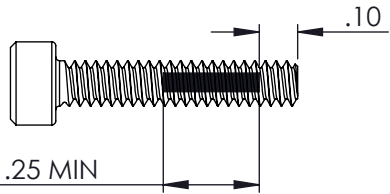
ADD 'K' FOR OPTIONAL
CAPTIVE SCREW FEATURE

ADD 'C' FOR OPTIONAL
CENTER MOUNTING HOLE



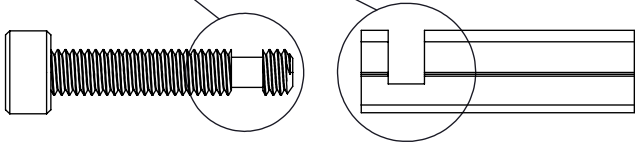
'V' OPTION

VISUALLY CONFIRMS LOCKED IN PLACE
WHEN RED SCREW HEAD IS CONCEALED



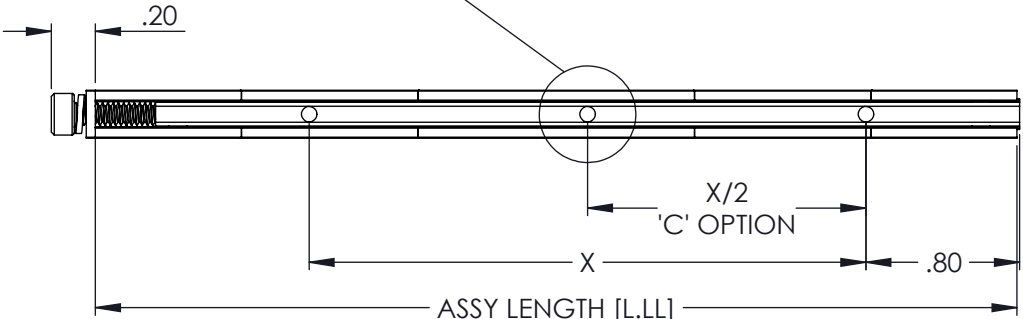
'P' OPTION

NYLON PATCH PER MIL-F-18240
PROVIDES ADDITIONAL RESISTANCE TO
SHOCK AND VIBRATION




'K' OPTION

CAPTIVATES SCREW BY FREE SPINNING WHEN
WEDGELOCK IS IN RELAXED POSITION



BOTTOM VIEW

NOTES:

 SHIP AS COMPLETE ASSEMBLY IN RELAXED STATE
(IF RIVET MOUNTING OPTION IS SELECTED, SHIP UNASSEMBLED)

THIS DOCUMENT, IN ITS ENTIRETY, CONTAINS INFORMATION
WHICH IS CONFIDENTIAL AND PROPRIETARY TO WAKEFIELD THERMAL.
DOCUMENTS MARKED WITH PROPRIETARY ARE NOT TO BE USED, DUPLICATED
OR DISCLOSED WITHOUT PRIOR WRITTEN PERMISSION OF AN OFFICER OR DULY
AUTHORIZED REPRESENTATIVE OF WAKEFIELD THERMAL OR AS MAY BE
PROVIDED IN A WRITTEN NON-DISCLOSURE AGREEMENT BETWEEN THE
PARTIES.

SIZE B	DWG NO. 426C-DS	REV 21A
CAGE CODE: 3E7U8	SCALE 1:1	SHEET 2 OF 2

MODEL_INFO:
426C Series Master

Mouser Electronics

Authorized Distributor

Click to View Pricing, Inventory, Delivery & Lifecycle Information:

[Wakefield Thermal:](#)

[426C-380SSH-KP](#)