

FEATURES


- DESIGNED FOR HEAVY SHOCK AND VIBRATION.
- UNIFORM CLAMPING FORCE AND HIGH THERMAL TRANSFER.
- NARROW WIDTH FOR MAXIMUM PCB COMPONENT AREA.
- LOW PROFILE DESIGN ALLOWS FOR DECREASED SLOT PITCH.
- CAPTIVATED REAR WEDGE.
- LIGHT WEIGHT = ASSEMBLY LENGTH X .080 OZ [2.27 G] OR [.89 G/CM]
- SPECIAL LENGTHS, FINISH, AND OTHER DESIGN OPTIONS AVAILABLE UPON REQUEST.

MATERIAL
MOUNTING BAR AND WEDGES: ALUMINUM 6063-T6.
ALL OTHER HARDWARE: STAINLESS STEEL, PASSIVATED.

PARTS ARE SHIPPED AS COMPLETE ASSEMBLY EXCEPT FOR RIVET MOUNT OPTION (SEE SHEET 2)
RECOMMENDED DRIVE SCREW TORQUE IS 6 IN-LBS (68 N-CM)

* CONTACT WAKEFIELD FOR COMPLETE HEATFRAME ASSEMBLY OR OTHER COMPONENT ITEMS

THIS DOCUMENT, IN ITS ENTIRETY, CONTAINS INFORMATION WHICH IS CONFIDENTIAL AND PROPRIETARY TO WAKEFIELD THERMAL. DOCUMENTS MARKED WITH PROPRIETARY ARE NOT TO BE USED, DUPLICATED OR DISCLOSED WITHOUT PRIOR WRITTEN PERMISSION OF AN OFFICER OR DULY AUTHORIZED REPRESENTATIVE OF WAKEFIELD THERMAL OR AS MAY BE PROVIDED IN A WRITTEN NON-DISCLOSURE AGREEMENT BETWEEN THE PARTIES.

CAD GENERATED DRAWING				<div> WAKEFIELD THERMAL 2910 INDUSTRIAL DRIVE, RALEIGH, NC 27609</div>	
TOLERANCES UNLESS OTHERWISE SPECIFIED:		NAME	DATE		
X.XX ± 0.010" X.XXX ± 0.005" ANGULAR ± 1° MACHINED SURFACES ⁶³ ✓	DRAWN		10/1/2021	TITLE: 422C WEDGELOCK DATASHEET 0.225 X 0.225	
	CHECKED	.	.		
	ENG APPR.		10/1/2021		
	MFG APPR.	.	.		
INTERPRET GEOMETRIC TOLERANCES PER: ASME Y14.5M-1994	Q.A.	.	.		
MATERIAL:					
SEE PART DETAIL	SIZE	DWG NO.		REV	
FINISH:	B	422C-DS		21A	
SEE FINISH TABLE	CAGE CODE:		3E7U8	SCALE 1:1	SHEET 1 OF 2
DO NOT SCALE DRAWING					

[LLL] LENGTH TABLE			
ASSY LENGTH [LLL]	[H] MTG X	[C] OPITON X/2	
280	0.900	0.450	
330	1.400	0.700	
380	1.900	0.950	
430	2.400	1.200	
480	2.900	1.450	
530	3.400	1.700	
580	3.900	1.950	
630	4.400	2.200	
680	4.900	2.450	
730	5.400	2.700	
780	5.900	2.950	
OTHER LENGTHS AVAILABLE UPON REQUEST			

[H] MOUNTING TABLE	
DASH NO	DESCRIPTION
A	NO MOUNTING HOLES
1 R	Ø 0.068/0.073 THRU ✓ Ø 0.213 X 100°
T	#0-80 UNF-2B THREADS
S	#2-56 UNC-2B THREADS
U	M2 X 0.4 - 6H THREADS
2 M	M2.5 X 0.45 - 6H THREADS
THREAD DEPTH .215	

[F] FINISH TABLE	
DASH NO	DESCRIPTION
A	NO FINISH
G	CHROMATE PER MIL-DTL-5541, CLASS 1A, TYPE I (GOLD)
T	TRIVALENT CHROMATE PER MIL- DTL-5541, CLASS 1A, TYPE II (CLEAR), RoHS COMPLIANT
B	BLACK ANODIZE PER MIL-A-8625, TYPE II, CLASS 2
H	HARD BLACK ANODIZE PER MIL-A-8625, TYPE III, CLASS 2
D	HARD BLACK ANODIZE PER MIL-A-8625, TYPE III, CLASS 2 WITH DRY FILM LUBE PER MIL-L-46010
E	ELECTROLESS NICKEL PER MIL-C-26074, CLASS 4, GRADE B, BRIGHT
*N	NADCAP COMPLIANT (EX: 'BN' - BLACK ANODIZE, NADCAP)

- NOTES:
- 1 SHIP AS COMPLETE ASSEMBLY IN RELAXED STATE
(IF RIVET MOUNTING OPTION IS SELECTED, SHIP UNASSEMBLED)
- 2 NOT RECOMMENDED, REVIEW WITH FACTORY

EXAMPLE
422C-480SSB-CKP
422C WEDGELOCK ASSEMBLY
4.80" LENGTH, 2-56 MTG, 3/32 SOCKET HEAD, BLACK ANODIZE
CENTER MTG HOLE, CAPTIVE SCREW, LOCK PATCH

PART NUMBER CODE
422C-[LLL][H][D][F]-[C][K][P][V]

PART DEFINITION
(REQUIRED)

PART NUMBER OPTIONS
(NOT REQUIRED)

SERIES PN

ASSY LENGTH
(SEE LENGTH TABLE)

MOUNTING HOLE
(SEE MOUNTING TABLE)

DRIVE SCREW
'M' FOR M2.5 HEX
'S' FOR 3/32 HEX

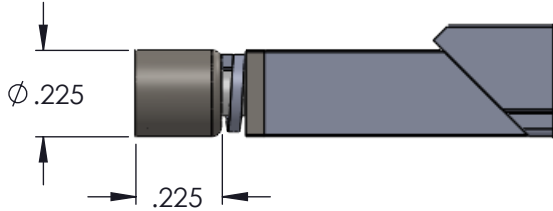
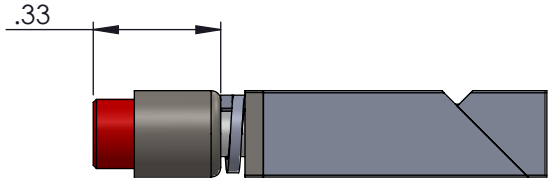
FINISH
(SEE FINISH TABLE)

ADD 'V' FOR OPTIONAL
VISUAL INDICATOR

ADD 'P' FOR OPTIONAL
LOCK PATCH

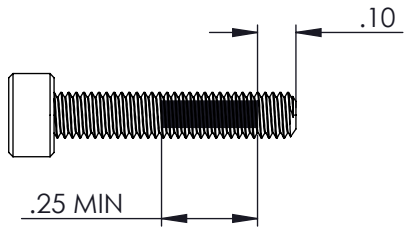
ADD 'K' FOR OPTIONAL
CAPTIVE SCREW FEATURE

ADD 'C' FOR OPTIONAL
CENTER MOUNTING HOLE



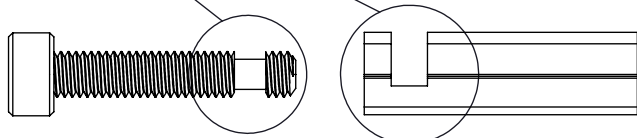
'V' OPTION

VISUALLY CONFIRMS LOCKED IN PLACE
WHEN RED SCREW HEAD IS CONCEALED



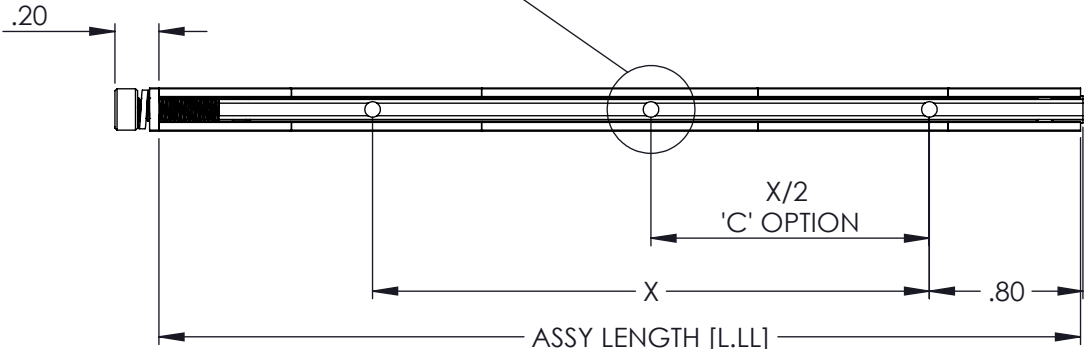
'P' OPTION

NYLON PATCH PER MIL-F-18240
PROVIDES ADDITIONAL RESISTANCE TO
SHOCK AND VIBRATION



'K' OPTION

CAPTIVATES SCREW BY FREE SPINNING WHEN
WEDGELOCK IS IN RELAXED POSITION



BOTTOM VIEW

THIS DOCUMENT, IN ITS ENTIRETY, CONTAINS INFORMATION WHICH IS CONFIDENTIAL AND PROPRIETARY TO WAKEFIELD THERMAL. DOCUMENTS MARKED WITH PROPRIETARY ARE NOT TO BE USED, DUPLICATED OR DISCLOSED WITHOUT PRIOR WRITTEN PERMISSION OF AN OFFICER OR DULY AUTHORIZED REPRESENTATIVE OF WAKEFIELD THERMAL OR AS MAY BE PROVIDED IN A WRITTEN NON-DISCLOSURE AGREEMENT BETWEEN THE PARTIES.

SIZE B	DWG NO. 422C-DS	REV 21A
CAGE CODE: 3E7U8	SCALE 1:1	SHEET 2 OF 2

MODEL INFO:
422C SERIES MASTER

Mouser Electronics

Authorized Distributor

Click to View Pricing, Inventory, Delivery & Lifecycle Information:

[Wakefield Thermal:](#)

[422C-280UMB](#) [422C-480UMB](#) [422C-480UMB-CKP](#) [422C-880MMT-CKV](#)