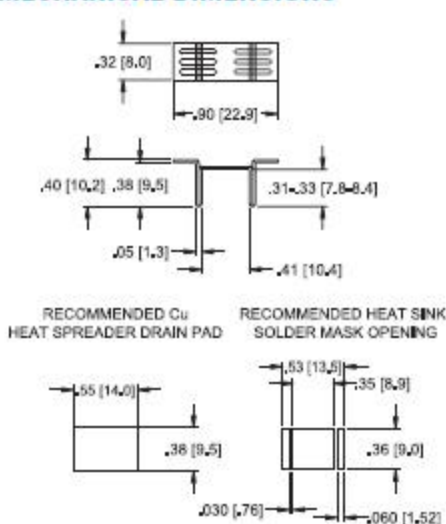


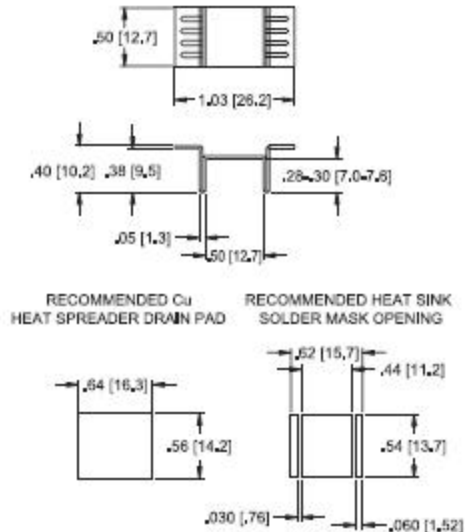
wakefield-vette

Standard P/N	Height Above PC Board in. (mm)	Maximum Footprint in. (mm)	Thermal Performance at Typical Load	
			Natural Convection	Forced Convection
218-40CTE3	.40 (10.2)	.90 (22.9) x .315 (8.0)	62°C rise @ 2W	21°C/W @ 200LFM
218-40CTE5	.40 (10.2)	1.03 (26.2) x .50 (12.7)	62°C rise @ 2W	21°C/W @ 200LFM

MECHANICAL DIMENSIONS

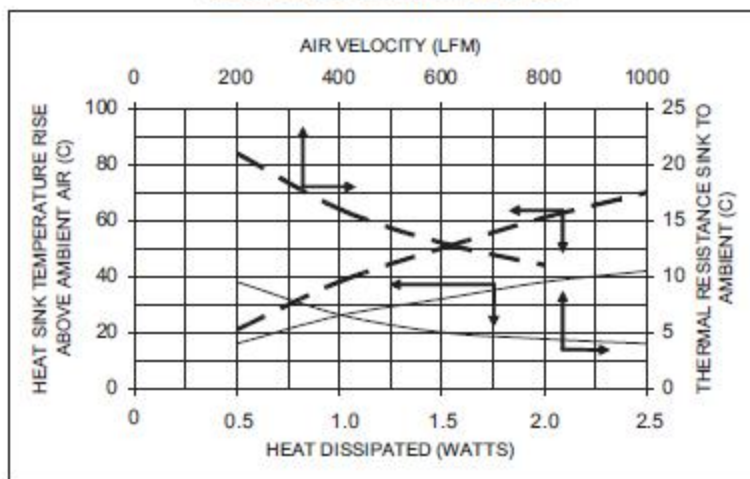


218-40CT3



218-40CT5

NATURAL AND FORCED CONVECTION CHARACTERISTICS



Solid line = 218-40CT5 Dashed Line = 218-40CT3

Mouser Electronics

Authorized Distributor

Click to View Pricing, Inventory, Delivery & Lifecycle Information:

[Wakefield Thermal:](#)

[218-40CT3](#) [218-40CT5](#) [218-40CTE5](#) [218-40CTE3](#)