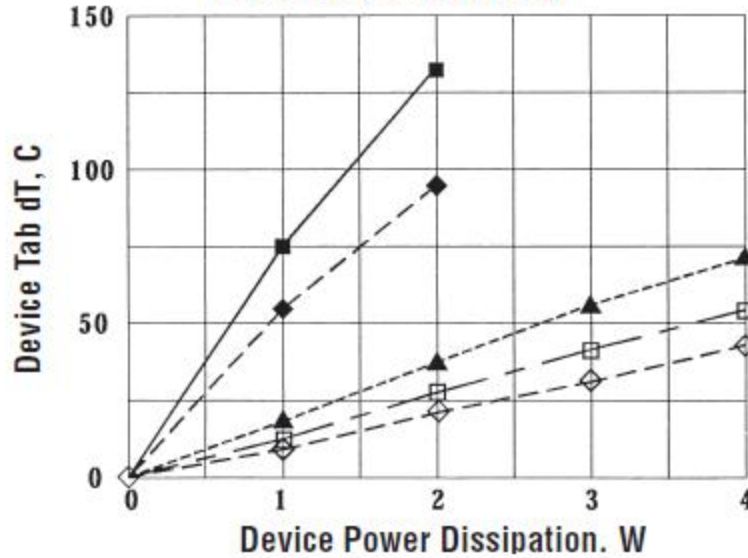
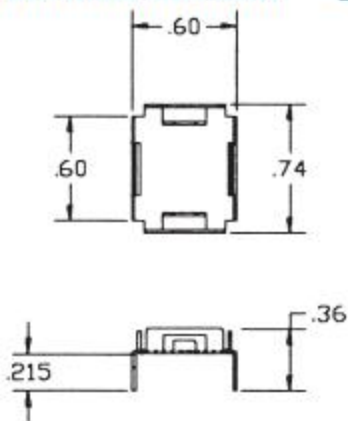


Standard P/N	Height Above PC Board in. (mm)	Footprint Dimensions in. (mm)	Package Format	Package Quantity	Thermal Performance at Typical Load Natural Convection	Thermal Performance at Typical Load Forced Convection
217-36CTE6	.360 (9.1)	.600 (15.2) x .740 (18.8)	Bulk	1	55°C @ 1W	16.0°C/W @ 200 LFM
217-36CTTE6	.360 (9.1)	.600 (15.2) x .740 (18.8)	Tube	20	55°C @ 1W	16.0°C/W @ 200 LFM
217-36CTRE6	.360 (9.1)	.600 (15.2) x .740 (18.8)	Tape & Reel	250	55°C @ 1W	16.0°C/W @ 200 LFM

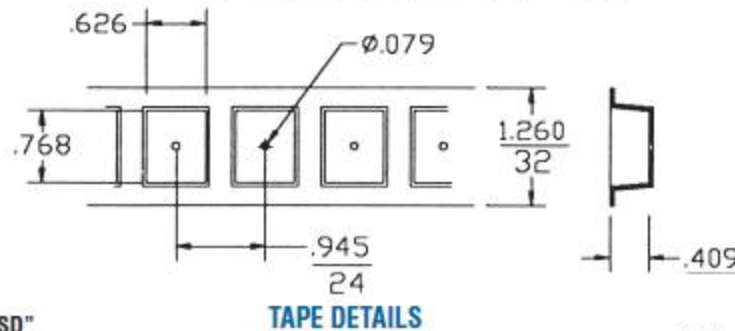
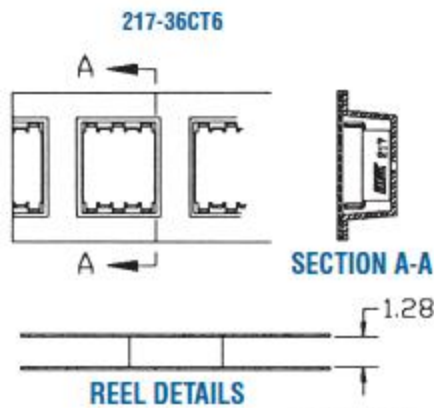
MECHANICAL DIMENSIONS

217 HEAT SINK WITH DDPACK DEVICE

THERMAL PERFORMANCE 6 LAYER BOARD, D'PAK 125°C LEAD, 40°C AMBIENT



- KEY:
- Device only, NC
 - ◆ Device + HS, NC
 - ▲ Device + HS, 100 lfm
 - Device + HS, 200 lfm
 - ◇ Device + HS, 300 lfm

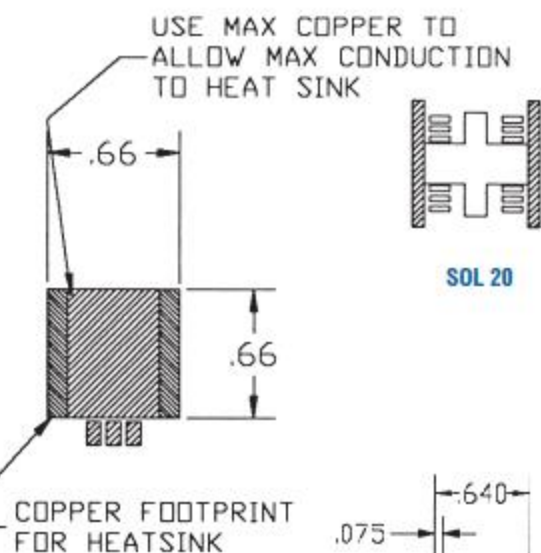
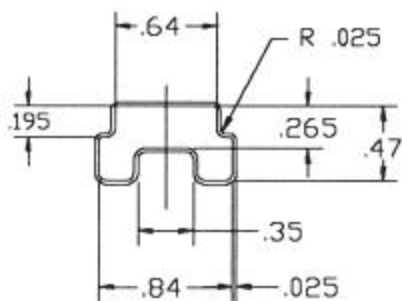


BOARD LAYOUT RECOMMENDATIONS

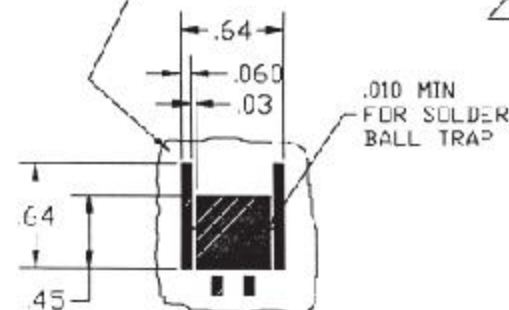
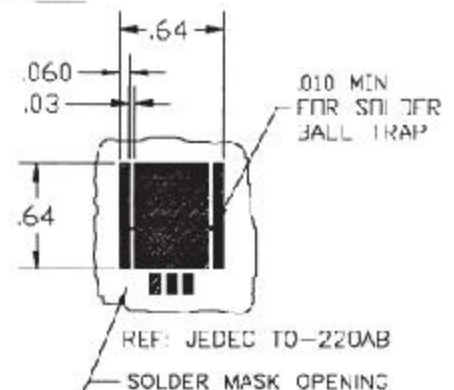
- NOTES
1. Material to be "ESD"
 2. Approximately 6 Meters per Reel
 3. 250 Pieces per Reel.

217-36CTRE6

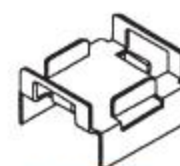
TUBE DETAILS



SOL 20



REF: JEDEC TO-263 (DD PAK)
REF: JEDEC MO-169 (DD PAK)



217-36CT6

217-36CTTE6

TUBE: 16.25 Inches Long,
Min. ESD Material with Nail
Stops
20 Pieces per Tube

Mouser Electronics

Authorized Distributor

Click to View Pricing, Inventory, Delivery & Lifecycle Information:

[Wakefield Thermal:](#)

[217-36CT6](#) [217-36CTE6](#) [217-36CTRE6](#)