

Description

Vector Electronics & Technology, Inc. cPCI resistive load boards provide a means to test power generated and cooling capability of cPCI systems.

Available is either 3U or 6U, these load boards function to test a system's cooling capability with a fixed 25W resistive load that generated necessary heat to verify chassis cooling and locates hot-spots in the chassis so airflow can be adjusted.

Features:

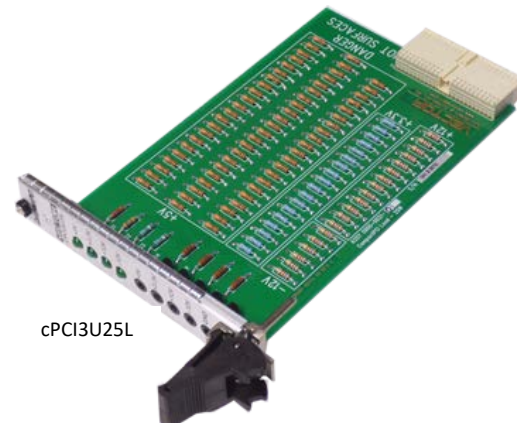
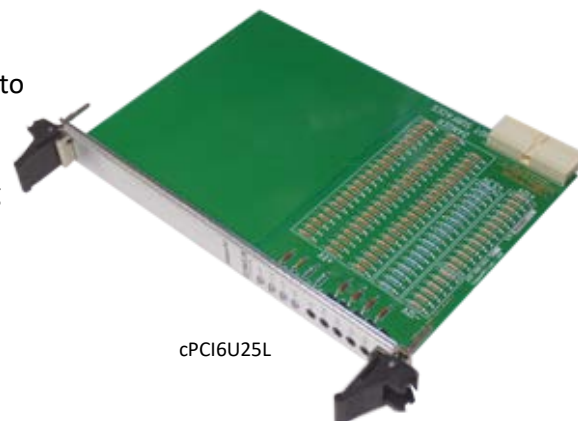
- ❖ Conforms to PICMG electrical and mechanical specifications for J1 power and ground only
- ❖ Fixed 25 watt load with test points to measure +5V, +3.3V, +12V, -12V & ground through P1 of the cPCI backplane
- ❖ Board thickness is standard 0.062", UL recognized 94V-0 and FR-4 or equivalent
- ❖ 3U X 160 or 6U X 160 J1 connection to power & ground with 25-row, 110-pin 2MM Hard Metric connector
- ❖ Standard front panel width of 4HP (0.80") wide
- ❖ 3U board: lower Type IV injector/ejector only, captive sleeve & screw on top of front panel
- ❖ 6U board: Top/bottom pair of Type IV injector/ejectors.

Board Specifications

- ❖ 2-layer stripline design
- ❖ 2 oz. copper power and ground layers
- ❖ 0.062" thick PCB, UL recognized 94V-0 and FR-4 or equivalent

Mechanical Specifications

- ❖ CPCI3U25L is 3U x 160mm
- ❖ CPCI6U25L is 6U x 160mm
- ❖ 4HP (0.80") wide



cPCI3U25L and
cPCI6U25L front
panel detail

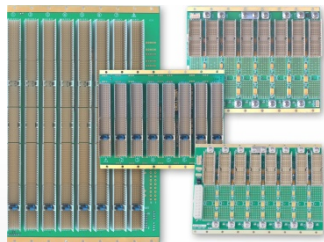
Power Rating

Voltage	Watts	Current Rating
+5V	35W	7.0A
3.3V	23.1W	7.0A
+12V	8.4W	0.7A
-12V	8.4W	0.7A

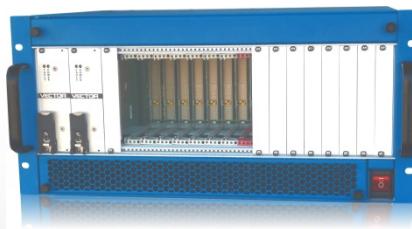
Ordering Information

Order Number	Description
CPCI3U25L	CPCI Resistive load board for 3U x 160MM chassis or Subrack
CPCI6U25L	CPCI Resistive load board for 6U x 160MM chassis or Subrack

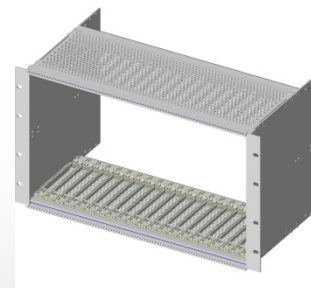
Related Products



cPCI Backplanes



cPCI System Enclosures



cPCI Subracks

Mouser Electronics

Authorized Distributor

Click to View Pricing, Inventory, Delivery & Lifecycle Information:

Vector:

[CPCI3U25L](#) [CPCI6U25L](#)