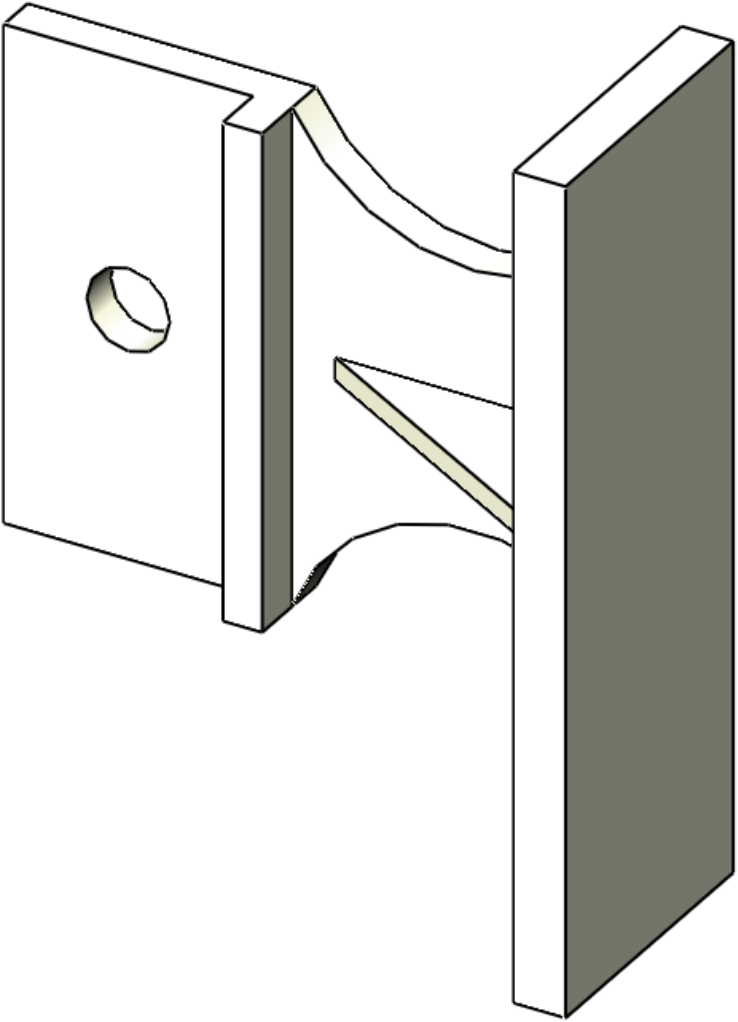


REVISIONS				
ZONE	REV.	DESCRIPTION	DATE	APPROVED
ALL	A1	ADDED ±.005 TOL. TO .188 DIM.	05/29/80	
	A2	ADDED MATTE FINISH REQUIREMENT TO NOTE 1 & INSPECTION NOTE	09/15/81	



1. CHECK PER DRAWING DIM. & NOTES

CRITICAL INSPECTION NOTES

PROPRIETARY AND CONFIDENTIAL

THE INFORMATION CONTAINED IN THIS DRAWING IS THE SOLE PROPERTY OF VECTOR ELECTRONICS & TECH., INC. ANY REPRODUCTION IN PART OR AS A WHOLE WITHOUT THE WRITTEN PERMISSION OF VECTOR ELECTRONICS & TECH., INC. IS PROHIBITED.

UNLESS OTHERWISE SPECIFIED:	
DIMENSIONS ARE IN INCHES	
TOLERANCES:	
FRACTIONAL ±	
ANGULAR: ± 5°	
TWO PLACE DECIMAL ±.03	
THREE PLACE DECIMAL ±.010	
INTERPRET GEOMETRIC TOLERANCING PER:	
MATERIAL	<input type="checkbox"/>
FINISH	<input type="checkbox"/>
DO NOT SCALE DRAWING	

	NAME	DATE
DRAWN	TRUSHAR	06/29/07
CHECKED		
ENG APPR.		
MFG APPR.		
Q.A.		
THIRD ANGLE PROJECTION		

VECTOR ELECTRONICS & TECHNOLOGY, INC		11115 VANOWEN ST., NORTH HOLLYWOOD, CA 91605	
HA-14 PULL TYPE EJECTOR HANDLE			
SIZE DWG. NO.		REV	
B MC 6101-B5.1		A2	
SCALE: 4:1		WEIGHT:	
		SHEET 1 OF 1	

2. HA14 INCLUDES : SCREW (P/N# SC4-5#)
LOCKWASHER (P/N# W4-1#) & NUT (P/N# NT4-2A#)

1. MAT'L : NYLON (MIL-M-20693A)
MATTE FINISH REQUIRED ON PRINTING SURFACE

NOTES: UNLESS OTHERWISE SPECIFIED.

Mouser Electronics

Authorized Distributor

Click to View Pricing, Inventory, Delivery & Lifecycle Information:

Vector:

HA14