

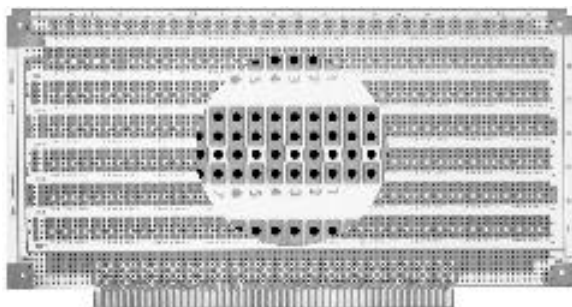
8801-6

Circuit Pattern:
Contacts:
Width/Thick:
Height:
16-Pin DIP Capacity:
Material:
V/G Terminals:
Socket Pins:
Solder Connector:
Extender:
Rec. Card Cage:
Wire-Wrap Connector:
Hole Diameter:

S-100

Pad-Per-Hole
 50/100 @ .125" Ctrs
 Ni/Gold
 5.3"/.062"
 10.0"
 80
 FR4 Epoxy Glass
 T44, T46, T49, T68
 R32
 R681-3
 3690-12
 Series 100
 R681-2
 .042"

- 0.042" diameter plated-thru holes on 0.1" grid
- I/O mounting area for ribbon cable connectors
- Layout paper and instructions included
- Row and column legends provided



8804

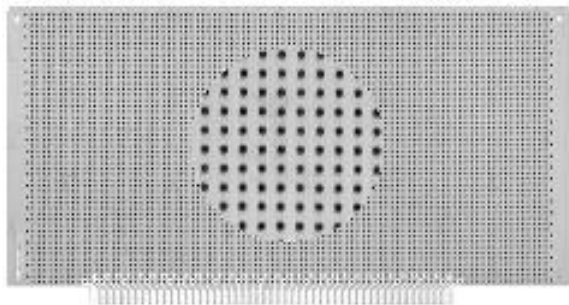
Circuit Pattern:
Contacts:
Width/Thick:
Height:
Material:
V/G Terminals:
Socket Pins:
Solder Connector:
Extender:
Rec. Card Cage:
Wire-Wrap Connector:
Hole Diameter:

S-100

Voltage/Ground Plane
 50/100 @ .125" Ctrs
 Ni/Gold
 5.3"/.062"
 10.0"
 CEM-1
 T44, T46, T49, T68
 R32
 R681-3
 3690-12
 Series 100
 R681-2
 .042"

- 0.085" diameter clearance area around holes, both sides
- Layout paper and instructions included
- components, and test fixtures
- Row and column legends provided
- Zig-Zag buses: pins, terminals, or wires contact either voltage of ground at each hole along bus lines

Other Buses



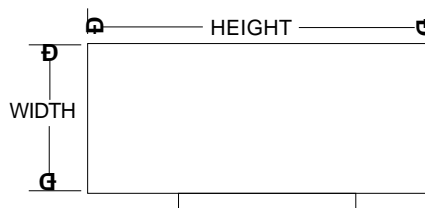
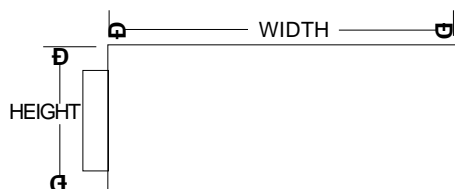
8801-1

Circuit Pattern:
Contacts:
Width/Thick:
Height:
16-Pin DIP Capacity:
Material:
V/G Terminals:
Socket Pins:
Solder Connector:
Extender:
Rec. Card Cage:
Wire-Wrap Connector:
Hole Diameter:

S-100

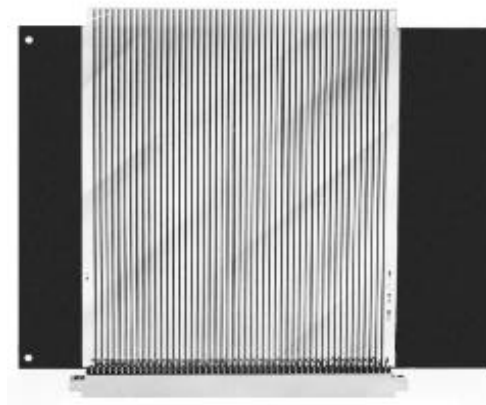
Contacts Only
 50/100 @ .125" Ctrs
 Ni/Gold
 5.3"/.062"
 10.0"
 110
 CEM-1
 T44, T46, T49, T68
 R32
 R681-3
 3690-12
 Series 100
 R681-2
 .042"

- Unrestricted component placement
- Layout paper and instructions included
- Row and column legends provided

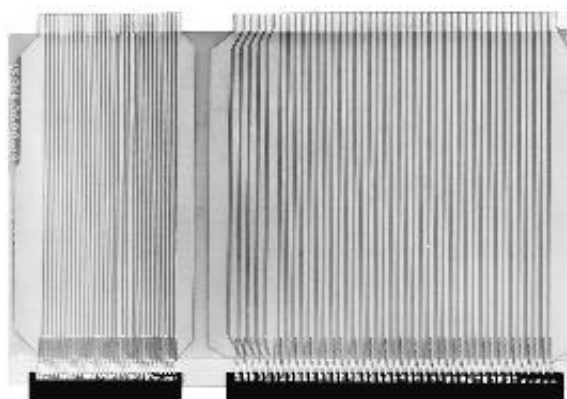


S-100 Extenders 3690-12

Length: 7.5" (190.5mm)
Connector: High reliability, gold-plated (mounted)
Contacts: 50/100
Current Rating: 5 amps at 10° F. rise
Voltage Rating: 200 RMS or 300 VDC
Material: FR4 Epoxy Glass, 2 oz. Cu.

**Multibus Extender 3690-18**

Length: 7.5" (190.5mm)
Height: 12" (304.8mm)
Connector: Gold-plated. Mounted on top and connected to circuit traces
Current Rating: 5 amps at 10° F. rise
Voltage Rating: 200 RMS or 300 VDC
Material: FR4 Epoxy Glass, 2 oz. Cu.



Mouser Electronics

Authorized Distributor

Click to View Pricing, Inventory, Delivery & Lifecycle Information:

Vector:

[3690-12](#) [3690-18](#) [8801-6](#) [8804](#) [3690-18#](#)