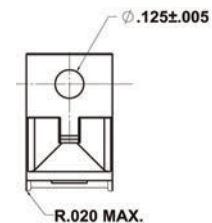
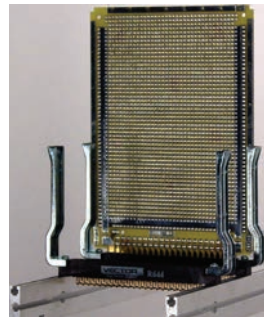


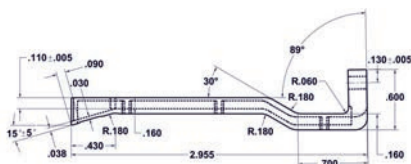
Free Standing Connector Mounted Card Guides

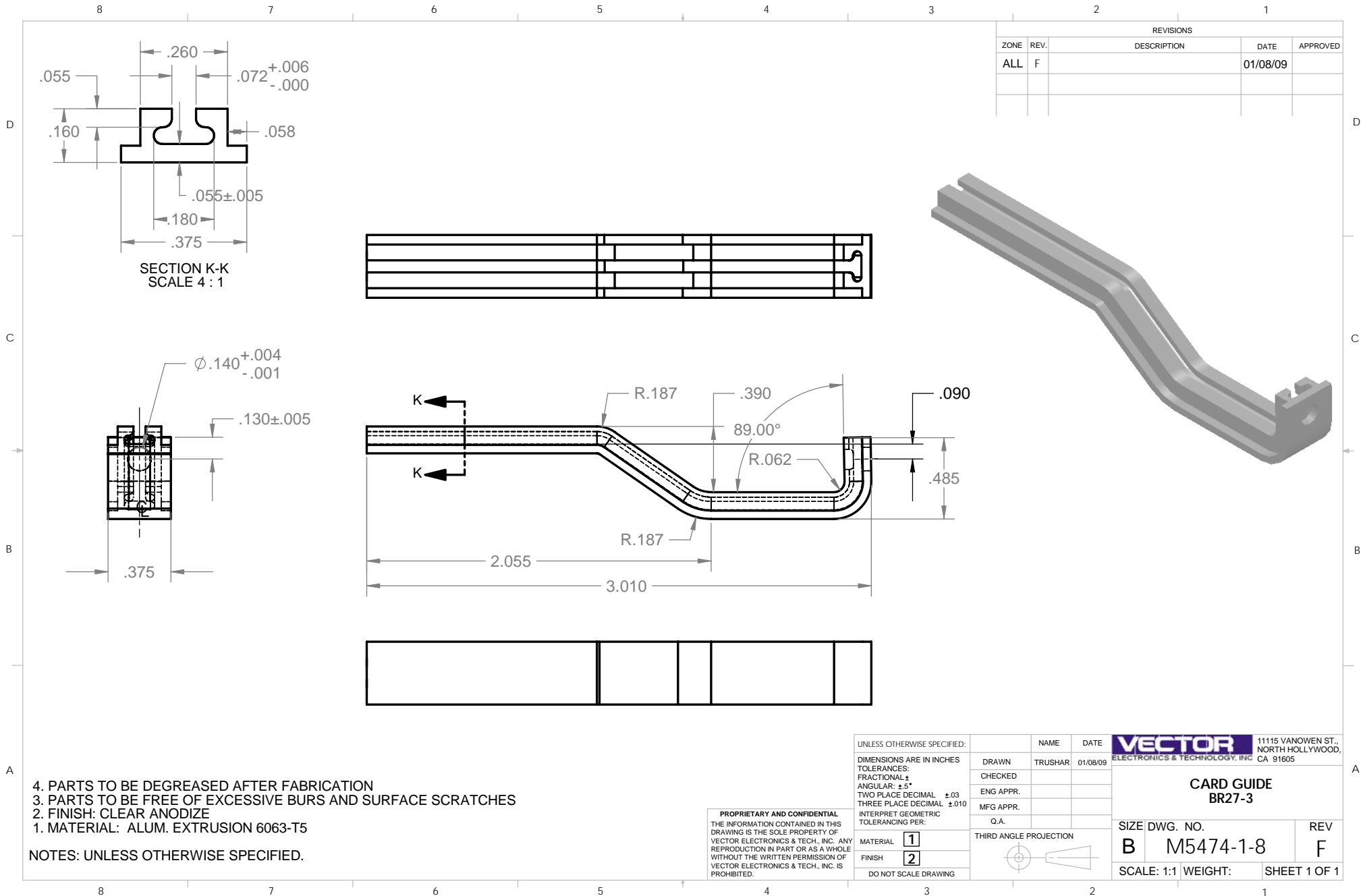
Secure connection, rugged support of 0.062" thick PCB's when space is limited. P/N BR27D is die cast of zinc alloy#3 (ASTM B240-06). Other sizes are 6063 T5 aluminum alloy. All sizes include HD55 hardware kit to attach connector to board. Connector not included (See Page 70). All sold as a pair and are fully RoHS compliant.



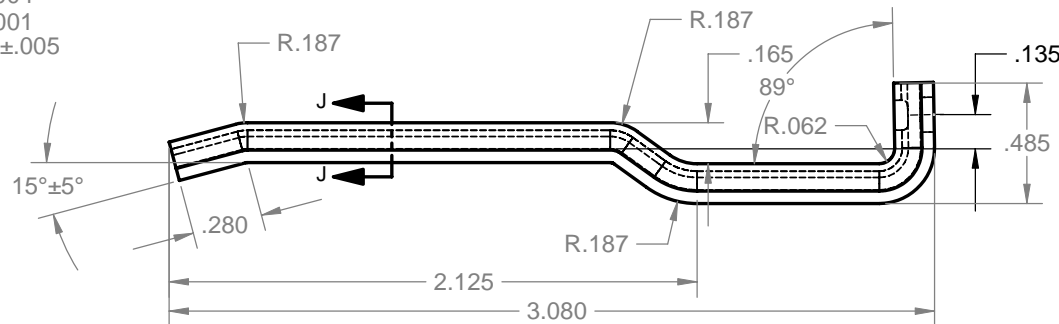
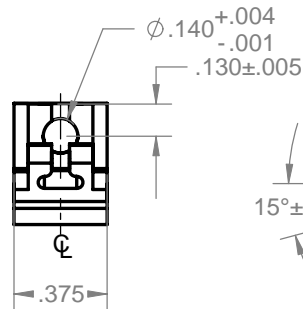
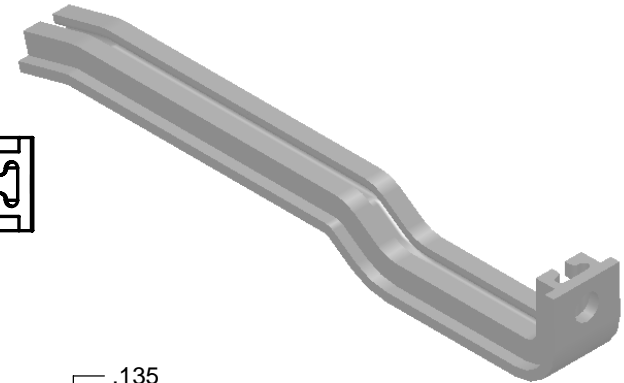
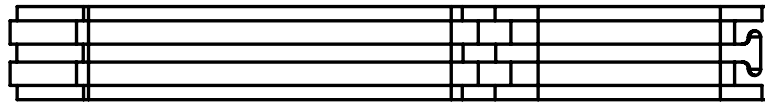
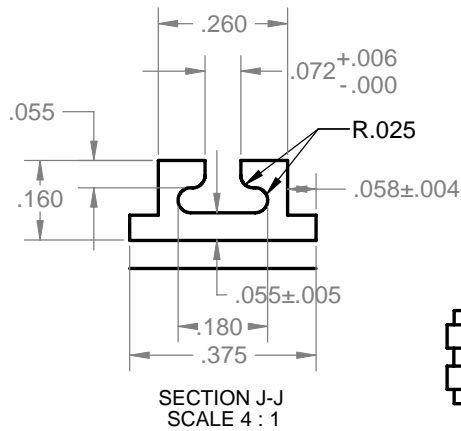
Part No.	Use With Connector	For Use With	Material
BR27D	R644, R644-2, R644-3C, R644-3F	4.5"W (3677, 3682 & 3662 series), Page 57	Zinc #3
BR27-1	R636-1, R636-2	4.5"W (3719 series), Page 58	Al Alloy 6063 T5
BR27-3	R630	2.73"W (3797 series), Page 56	Al Alloy 6063 T5
BR27-5	R656-1, R656-2	4.5"W (4610 series), Page 63	Al Alloy 6063 T5

BR27D Zinc die-cast model shown





REVISIONS				
ZONE	REV.	DESCRIPTION	DATE	APPROVED
ALL	F		01/08/09	



4. PARTS TO BE DEGREASED AFTER FABRICATION
3. PARTS TO BE FREE OF EXCESSIVE BURS AND SURFACE SCRATCHES
2. FINISH: CLEAR ANODIZE
1. MATERIAL: ALUM. EXTRUSION 6063-T5

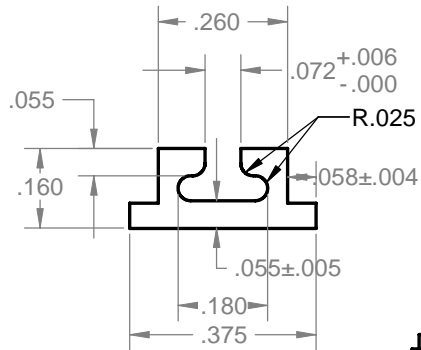
NOTES: UNLESS OTHERWISE SPECIFIED.

PROPRIETARY AND CONFIDENTIAL
THE INFORMATION CONTAINED IN THIS DRAWING IS THE SOLE PROPERTY OF VECTOR ELECTRONICS & TECH., INC. ANY REPRODUCTION IN PART OR AS A WHOLE WITHOUT THE WRITTEN PERMISSION OF VECTOR ELECTRONICS & TECH., INC. IS PROHIBITED.

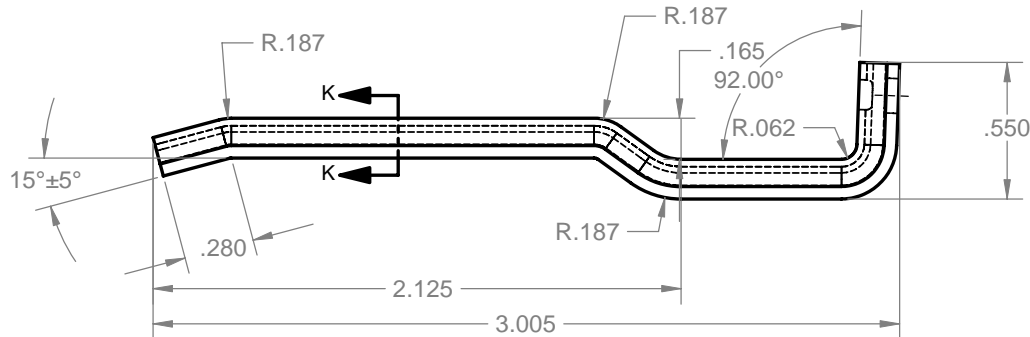
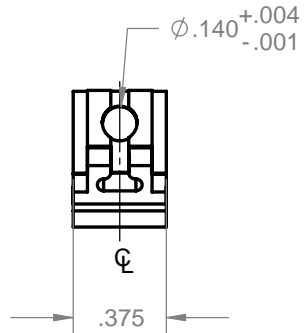
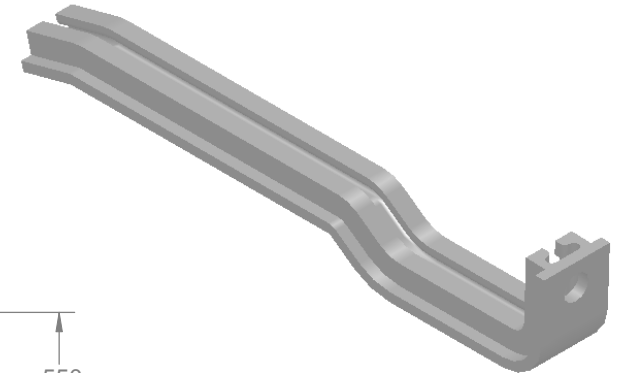
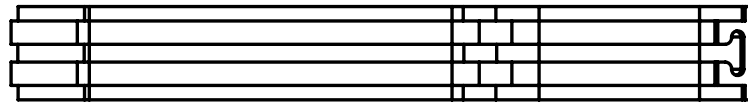
UNLESS OTHERWISE SPECIFIED:		NAME	DATE	VECTOR 11115 VANOWEN ST., NORTH HOLLYWOOD, CA 91605	
DIMENSIONS ARE IN INCHES		DRAWN	TRUSHAR	01/08/09	CARD GUIDE BR27-1
TOLERANCES:		CHECKED			
FRACTIONAL ±		ENG APPR.			
ANGULAR: ±5°		MFG APPR.			
TWO PLACE DECIMAL ±.03		Q.A.			<div>THIRD ANGLE PROJECTION</div>
THREE PLACE DECIMAL ±.010					
INTERPRET GEOMETRIC TOLERANCING PER:					
MATERIAL 1					
FINISH 2					
DO NOT SCALE DRAWING					

SIZE DWG. NO.	REV
B M5474-1-5	F
SCALE: 1:1 WEIGHT:	SHEET 1 OF 1

REVISIONS				
ZONE	REV.	DESCRIPTION	DATE	APPROVED
ALL	F		01/08/09	



SECTION K-K
SCALE 4 : 1



4. PARTS TO BE DEGREASED AFTER FABRICATION
3. PARTS TO BE FREE OF EXCESSIVE BURS AND SURFACE SCRATCHES
2. FINISH: CLEAR ANODIZE
1. MATERIAL: ALUM. EXTRUSION 6063-T5

NOTES: UNLESS OTHERWISE SPECIFIED.

PROPRIETARY AND CONFIDENTIAL
THE INFORMATION CONTAINED IN THIS DRAWING IS THE SOLE PROPERTY OF VECTOR ELECTRONICS & TECH., INC. ANY REPRODUCTION IN PART OR AS A WHOLE WITHOUT THE WRITTEN PERMISSION OF VECTOR ELECTRONICS & TECH., INC. IS PROHIBITED.

UNLESS OTHERWISE SPECIFIED:

DIMENSIONS ARE IN INCHES
TOLERANCES:
FRACTIONAL ±
ANGULAR: ±5°
TWO PLACE DECIMAL ±.03
THREE PLACE DECIMAL ±.010
INTERPRET GEOMETRIC TOLERANCING PER:

MATERIAL **1**

FINISH **2**

DO NOT SCALE DRAWING

NAME DATE

DRAWN TRUSHAR 01/08/09

CHECKED

ENG APPR.

MFG APPR.

Q.A.

THIRD ANGLE PROJECTION



VECTOR 11115 VANOWEN ST.,
ELECTRONICS & TECHNOLOGY, INC. NORTH HOLLYWOOD, CA 91605

**CARD GUIDE
BR27-5**

SIZE DWG. NO.

B M5474-1-12

SCALE: 1:1 WEIGHT: SHEET 1 OF 1

REV
F

Mouser Electronics

Authorized Distributor

Click to View Pricing, Inventory, Delivery & Lifecycle Information:

[Vector:](#)

[CG2-80P](#) [CG2-80M](#) [CG2-65S](#) [CG2-95P](#) [CG2-95M](#) [CG2-50P](#) [CG2-95S](#) [BR27D](#) [CG2-80S](#) [CG2-135M](#) [CG2-65P](#)
[CG2-45P](#) [CG2-45S](#) [BR27-5](#) [BR27-1](#) [BR27-3](#)