

# CNX D Series

## Build Your Own Indicator for use with T-1 3/4 (5mm) 3-Lead LEDs



CNX D Series features modular panel mount indicator assemblies and mounting hardware and require no tools for assembly



### Applications

- Industrial
- Transportation
- Emergency Applications
- Maritime, Oil and Gas Industry
- Automation and Control
- People Movers
- Instrument Panels
- Gaming and Vending Machines
- Outdoor Applications

### Key Features

- For panel hole diameter: 0.281" (7.14mm)
- Choice of 2 different types of lenses and a round panel clip
- Terminations available: stripped end and locking connector
- Eliminates the need for soldering or crimping wires
- Available wire gauge: 22 AWG or 24 AWG
- Available in 6 standard wire lengths, from 4" to 24"
- Wire colors: White/Black/Red
- Panel thickness ranges from .030" (0.762mm) to .220" (5.588mm)
- 5mm (T-1 3/4) 3-Leads LED, lens, clip and spacer needs to be ordered separately
- Spacer SPC\_060 made of EPDM rubber is optional and designed to seal against water, oil, air and dust
- For additional options please contact our technical sales department
- U.S. and foreign patent issued
- RoHS and REACH Compliant

## Ordering Data

Series	LED Termination	Wire Size	Wire Color	Wire Length
CNX D	X	4	6	12
	X	2	6	04
	Stripped End	22 AWG	White-Black-Red	4in (101.6mm)
	F	4		06
	Single Row Locking Header	24 AWG		6in (152.4mm)
				08
				12
				18
				24
				24in (609.6mm)



Example:

**CNX\_D\_X\_4\_6\_12**

Stripped End, 24 AWG Wire Size, White/Black/Red Wire Color, 12 Inch Wire Length

*Shown with 3-Leads 5mm (T-1 3/4) LED and CML 325 Lens*

**\*Call VCC for additional options**

## Terminations



### Stripped End (X)

Wire color options



### Single Row (F)

Locking Connector  
3 Wires Option Only

## Accessories (Order Separately)



### 5mm (T-1 3/4)

3-leads with or  
without Flange



### SPC 060

O-ring Option  
SPC\_060



### CMC 285

Round Panel Clip  
CMC\_285\_BLK



### CML 325

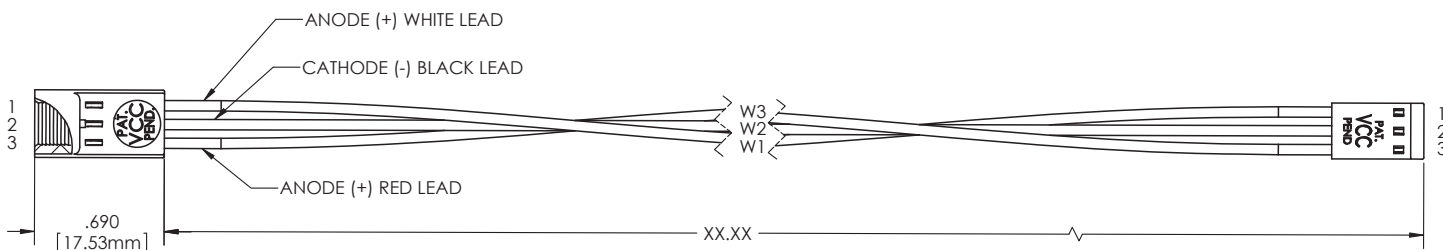
Fresnel Lens  
○ CML\_325\_CTP



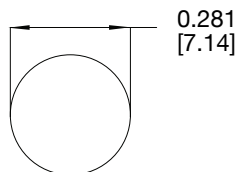
### CML 327

Plain Lens  
○ CML\_327\_CTP

## Product Dimensions



### Recommended Mounting Hole



#### Notes:

1. All dimensions are in inches [millimeters]
2. Tolerance is  $\pm .500$  [12.7] unless otherwise noted.
3. XX.XX Refer to wire length
4. The specifications, characteristics and technical data described in the datasheet are subject to change without prior notice.

## Product Specifications

Materials	
Panel Connector Socket	Polypropylene, UL 94-HB
Head Connector	Polyester, UL 94-V0
Terminals	Phosphor Bronze, Tin Plate
Wire	22 or 24 AWG 1007/1569

Installation Specifications	
Mounting Hole	0.281" (7.14mm)
Panel Thickness	<p>.030" (.762mm) Min - .220" (5.588mm) Max  <b>Using CMC 285</b>                      For .030" (.762mm) - .045" (1.143mm)                      Use 2 SPC_060 Spacer                      For .050" (1.27mm) - .100" (2.54mm)                      Use 1 SPC_060 Spacer                      For .105" (2.67mm) - .125" (3.175mm)                      No spacer required  <b>Using CML 325 or CML327</b>                      For .060" (1.524mm) - .100" (2.54mm)                      Use 2 SPC_060 Spacer                      For .105" (2.667mm) - .125" (3.175mm)                      Use 1 SPC_060 Spacer                      For .150" (3.81mm) - .220" (5.588mm)                      No spacer required</p>
LED Lead Length	<p>CMC 285 - .350" <math>\pm .01</math>" (8.89mm <math>\pm 0.254</math>mm)                      CML 325 or CML 327 - .275" <math>\pm .01</math>" (6.985mm <math>\pm 0.254</math>mm)</p>

## Compliances and Approvals



# Mouser Electronics

Authorized Distributor

Click to View Pricing, Inventory, Delivery & Lifecycle Information:

VCC:

[CNX\\_D\\_X\\_4\\_6\\_04](#)