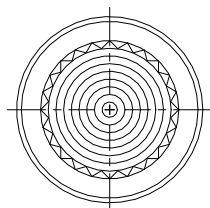
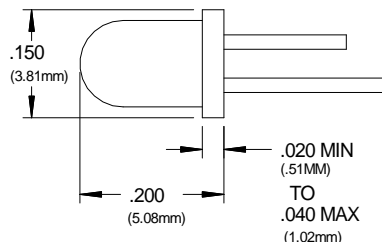




ACTUAL SIZE



RECOMMENDED LED  
SIZE T-1 (3MM)



LEDs with a major ID of .125" can be accommodated  
by reducing the panel mounting hole size.

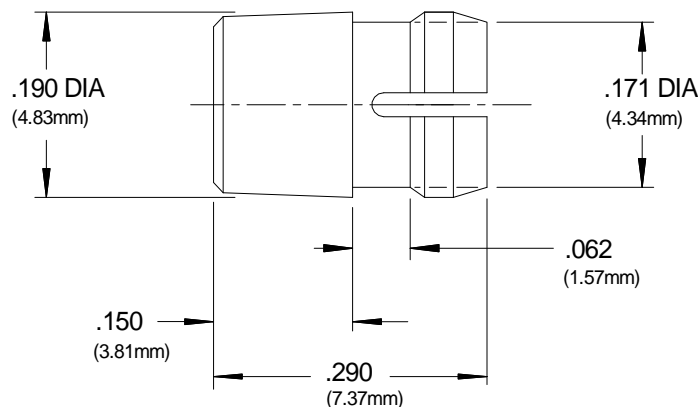
NOTES:

MATERIAL: Polycarbonate  
GLO Series - Polycarbonate/Acrylic blend

DESIGN: High profile lens using Fresnel rings.

MOUNTING: Mounts through the front of panel.  
Mounting holes should be deburred but not chamfered.  
Hole size .171"±.002 (4.34mm) on 1/4" centers.  
Panel thickness 1/32" to 1/8"

For additional security use retaining ring  
RNG 165 for use with .125" dia. LEDs



ORDERING CODES

MODEL SML 190 RTP

COLOR                     

RTP Red Transparent    BTP Blue Transparent  
ATP Amber Transparent    YTP Yellow Transparent  
GTP Green Transparent    CTP Clear Transparent  
GLO White Translucent

**NEW**

U.S. & Foreign Pat. Issued & Pend.

TOLERANCES (EXCEPT AS NOTED)	REVISIONS				VCC P/N: CLIPLITE® SML 190			
	NO.	DESCRIPTION	DATE	BY				
DECIMAL ±.010	1	Add GLO Series	1/6/09	JG				
ANGLE ± 30'	2							
DIAMETER .003 TIR	3							
RADII .008 Max	4							
	5							

**VCC** VISUAL COMMUNICATIONS COMPANY, INC.  
190 Bosstick Blvd, Ste. 101 San Marcos, California 92069 U.S.A.  
Phone: (760) 560-1300; Fax: (760) 560-1301; e-mail: vccsales@vcclite.com

DRAWN BY	JMS	DATE	10/25/85	DRAWING NO.	SML 190A	REV.	1
CHK'D		SCALE	5 X				

# Mouser Electronics

Authorized Distributor

Click to View Pricing, Inventory, Delivery & Lifecycle Information:

[VCC:](#)

[RNG165](#) [RNG\\_190](#)