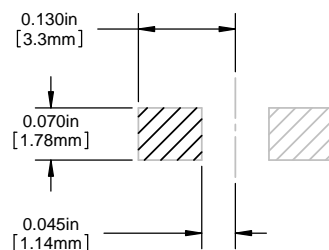


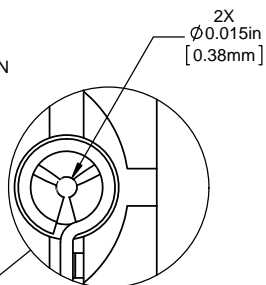
NOTES:

1. ROHS COMPLIANT
2. MATERIAL: HOUSING - NYLON 6/6, U.L. 94-V0 RATING, BLACK (UNLESS OTHERWISE SPECIFIED)
CONTACTS - PHOSPHOR BRONZE, TIN PLATED
3. MOUNTING: SOCKET MOUNTS ON .250" [6.35mm] CENTERS. INSERT COMPONENT LEADS THRU THE MOUNTING PAD END OF SOCKET
4. OPTO: STANDARD VISIBLE, IR LED, OR PHOTO DETECTOR WITH LEADS ON .100" [.25mm] CENTERS
5. LED LEAD DIMENSIONS: MINIMUM .017" [.43mm] ROUND OR SQUARE SHAPE. MAXIMUM .030" [.76mm] THICKNESS - .040" [1.02mm] WIDTH
6. U.S. & FOREIGN PATENTS ISSUED

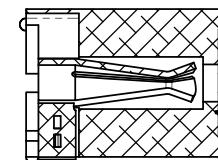
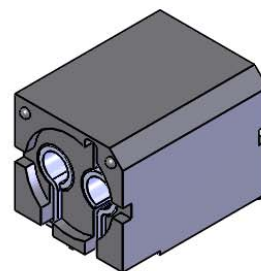
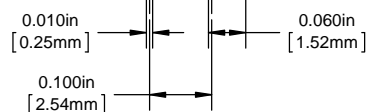
REVISIONS					
ECN #	REV.	DESCRIPTION	DATE	INITIALS	CHK'D
	001	REVISED PER ECR 111009AZ01	6/20/10	SMU	DZ
426	002	REVISED PER ECR 041212KH02	4/13/12	KH	ED



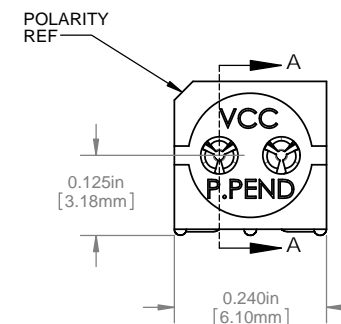
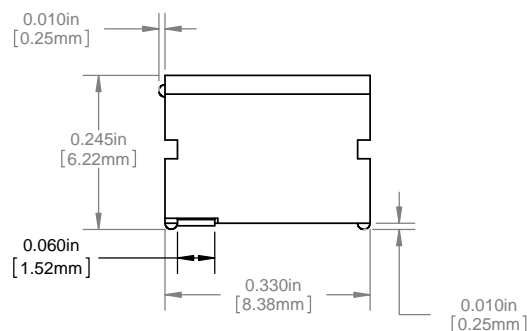
SMD PAD PATTERN



DETAIL B
SCALE 10 : 1



SECTION A-A



POLARITY
REF

ORDERING CODE : **SMD 330**

APPROVAL		DATE
DRAWN	SMU	6/20/10
CHECKED	DZ	6/20/10
MATERIAL		
SEE NOTES		
FINISH		
SEE NOTES		
DO NOT SCALE DRAWING		

VCC 12780 DANIELSON CT, SUITE A, POWAY, CA 92064 U.S.A PHONE: (800) 522-5546 EMAIL: vccsales@vcclite.com	
TITLE: P-C-LITE® HORIZONTAL MOUNT	
SIZE B	DWG. NO. SMD 330
REV 002	

SCALE: 5:1	SHEET 1 OF 1
------------	--------------

Mouser Electronics

Authorized Distributor

Click to View Pricing, Inventory, Delivery & Lifecycle Information:

VCC:

SMD_330