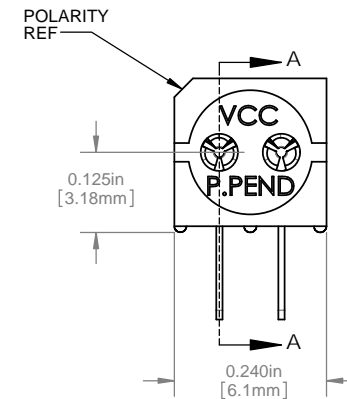
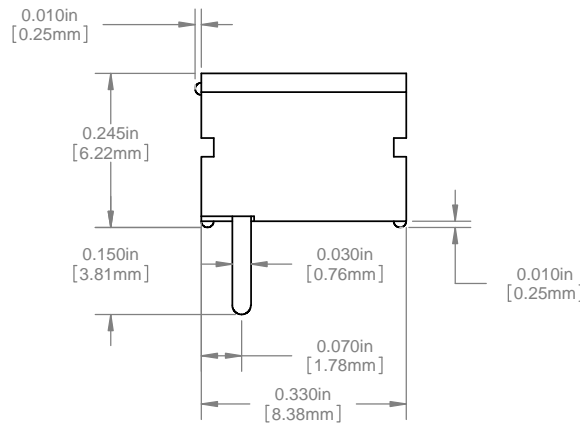
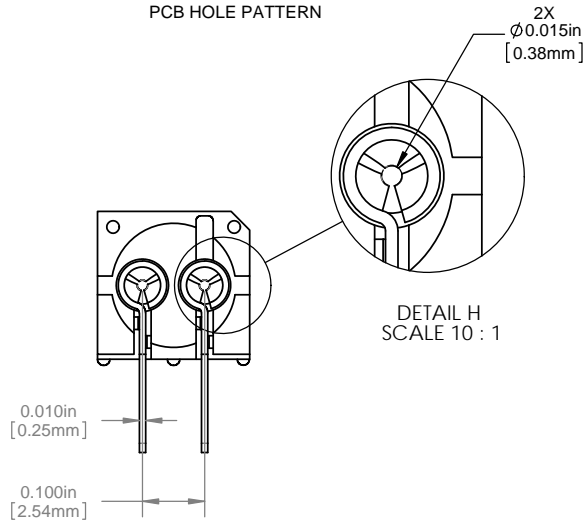
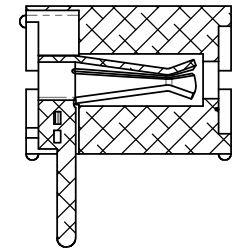
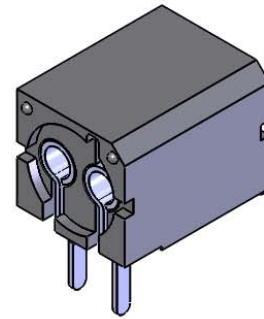
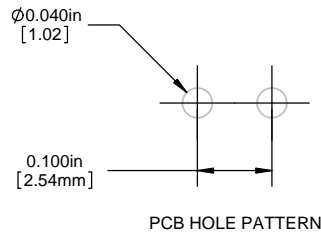


NOTES:

1. ROHS COMPLIANT
2. MATERIAL: HOUSING - NYLON 6/6, U.L. 94-V0 RATING, BLACK (UNLESS OTHERWISE SPECIFIED)
CONTACTS - PHOSPHOR BRONZE, TIN PLATED
3. MOUNTING: SPACING ON .250 [6.35mm] CENTERS
4. OPTO: STANDARD VISIBLE, IR LED, OR PHOTO DETECTOR WITH LEADS ON .100" [.25mm] CENTERS
5. LED LEAD DIMENSIONS: MINIMUM .017" [.43mm] ROUND OR SQUARE SHAPE. MAXIMUM .030" [.76mm]
THICKNESS - .040" [1.02mm] WIDTH
6. U.S. & FOREIGN PATENTS ISSUED

| REVISIONS | | | | | |
|-----------|------|----------------------------|---------|----------|-------|
| ECN # | REV. | DESCRIPTION | DATE | INITIALS | CHK'D |
| - | 001 | REVISED PER ECR 111009AZ01 | 6/20/10 | SMU | DZ |
| 410 | 002 | REVISED PER ECR 030712ED01 | 3/8/12 | KH | AZ |



ORDERING CODE : PCH 330

| | | | | | |
|---|--|--|--|--|--|
| <small> DIMENSION STYLE: INCHES / MM GENERAL TOLERANCES UNLESS OTHERWISE SPECIFIED: INCHES: X ± .020, XX ± .010, XXX ± .005 ANGLE: 1° BREAK ALL CORNERS AND SHARP EDGES 90° MAX THIRD ANGLE PROJECTION PROPRIETARY AND CONFIDENTIAL THE INFORMATION CONTAINED IN THIS DRAWING IS THE SOLE PROPERTY OF VISUAL COMMUNICATIONS COMPANY, INC. ANY REPRODUCTION IN PART OR AS A WHOLE WITHOUT THE WRITTEN PERMISSION OF VISUAL COMMUNICATIONS COMPANY, INC. IS PROHIBITED. </small> | | <small>APPROVAL</small> DRAWN: SMU CHECKED: DZ DATE: 6/20/10 6/20/10 | | 12780 DANIELSON CT, SUITE A, POWAY, CA 92064 U.S.A PHONE: (800) 522-5546 EMAIL: vccsales@vcc-lite.com | |
| <small>MATERIAL</small> SEE NOTES | | <small>FINISH</small> SEE NOTES | | <small>TITLE</small> P-C-LITE® VERTICAL MOUNT | |
| <small>DO NOT SCALE DRAWING</small> | | <small>SCALE: 5:1</small> | | <small>SHEET 1 OF 1</small> | |
| <small>SIZE</small> B | | <small>DWG. NO.</small> PCH 330 | | <small>REV</small> 002 | |

Mouser Electronics

Authorized Distributor

Click to View Pricing, Inventory, Delivery & Lifecycle Information:

VCC:

PCH_330