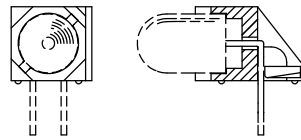
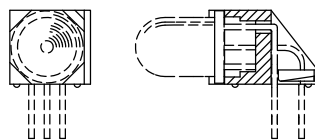
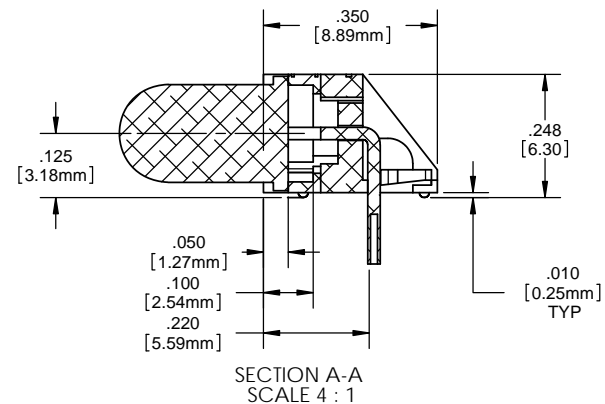
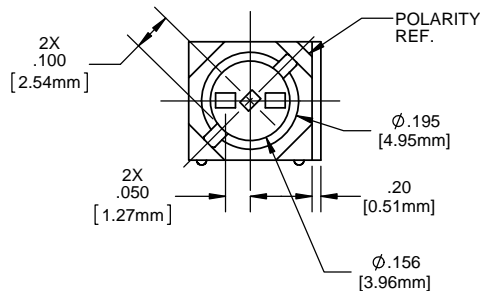
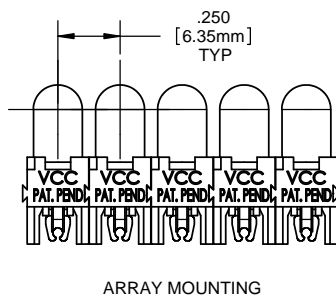
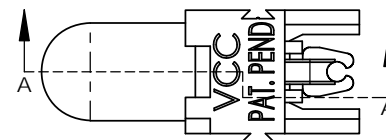
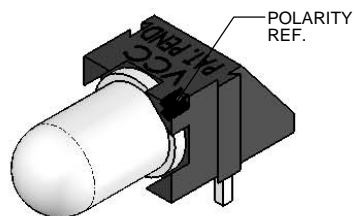
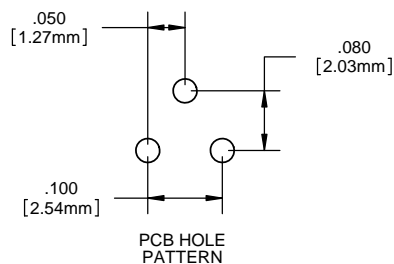


NOTES:

1. LED MOUNTING: for 5mm LEDs - round or rectangular shape with or without flange. Bi-lead, standard .100 [2.54mm] lead spacing. Tri-lead, either .050 [1.27mm] or .100 [2.54mm] lead spacing. Both the bi-lead and tri-lead LEDs can also be combined in arrays with one another.
2. ASSEMBLY: Can be used as a single LED mount or banded together in an array with its dovetail interlocking feature. When banded together with the PCH 175 the LEDs are on .250 [6.35mm] centers.
3. MATERIAL: Housing - Nylon 6/6, U.L. 94 V0 Rating, Color black (unless otherwise spec.)
4. U.S. & Foreign Pat. Issued & Pend.
5. LED shown for illustrative purposes.



PROPRIETARY AND CONFIDENTIAL
THE INFORMATION CONTAINED IN THIS DRAWING IS THE SOLE PROPERTY OF VISUAL COMMUNICATIONS COMPANY, LLC. ANY REPRODUCTION IN PART OR AS A WHOLE WITHOUT THE WRITTEN PERMISSION OF VISUAL COMMUNICATIONS COMPANY, LLC IS PROHIBITED.

DIMENSION STYLE: INCHES [MM] GENERAL TOLERANCES UNLESS OTHERWISE SPECIFIED		
	INCHES	MM
X	± .020	± .508
XX	± .010	± .254
XXX	± .005	± .127
ANGLE ± 1°		
BREAK ALL CORNERS AND SHARP EDGES .030 MAX		
THIRD ANGLE PROJECTION		

MATERIAL	
NYLON 6/6, UL 94-V0, BLACK (UNLESS OTHERWISE SPEC.)	
FINISH	
APPROVAL	
DRAWN: SMU	6/20/10
CHECKED: DZ	6/20/10
DO NOT SCALE DRAWING	

VCC	
12780 DANIELSON CT, SUITE A, POWAY, CA 92064 U.S.A PHONE: (800) 522-5546 EMAIL: vccsales@vccclite.com	
TITLE:	
P-C-LITE® RT ANGLE MOUNT	
PART #	SIZE
PCH_175	B
DRAWING #	REV
PCH 175	002
SCALE: 1:1	
SHEET 1 OF 1	

Mouser Electronics

Authorized Distributor

Click to View Pricing, Inventory, Delivery & Lifecycle Information:

VCC:

PCH_175