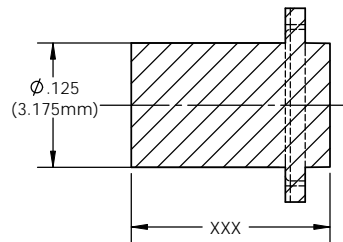
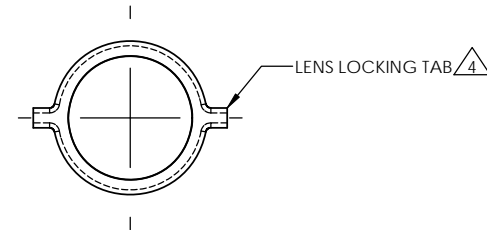
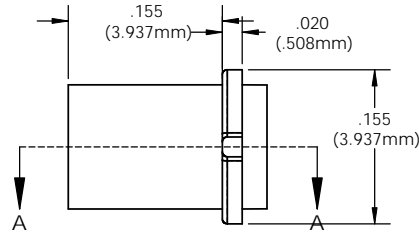


NOTES:

1. DESIGN: Lens mounts the Litepipe securely to display panel providing 180° viewing angle
2. MOUNTING: Panel mounting hole .171 (4.3mm) on 1/4" centers
3. PANEL THICKNESS: For SMB 200 & SMQ 250: 1/32" to 1/8"
4. LENS LOCK: Insert Litepipe into lens aligning the tabs with the lens slot
5. Standoff used to adjust the height of a standard LED above the PCB and maintain a maximum .050" clearance between the Litepipe and LED.
6. Length is from front of panel to LED
7. Custom lengths available upon request (Minimum order quantity may apply)
8. U.S. & Foreign Pat. Issued & Pend.

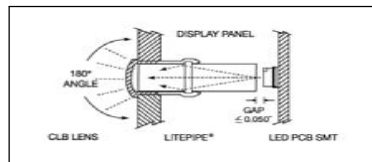



SECTION A-A

ORDERING CODE: **LSV XXX CTP**

LENGTH CODE		COLOR	
020	=.200"	CTP	CLEAR
040	.400		
060	.600		
080	.800		
100	1.000		
120	1.200		

CUSTOM LENGTHS
AVAILABLE UPON
REQUEST
(SEE NOTE 7)



UNLESS OTHERWISE SPECIFIED DIMENSIONS ARE IN INCHES:		MATERIAL		VISUAL COMMUNICATIONS COMPANY, INC. 190 Bosstick Boulevard, Suite 101 San Marcos, CA 92069 USA Phone (760) 560-1300 Fax (760) 560-1301 email vccsales@vccite.com						
ANGLES	DECIMALS	ACRYLIC (OPTICAL GRADE)								
		U.L. 94-HB								
FINISH	.XXX ±.010	FINISH		TITLE: 3MM ROUND LITEPIPE						
	.XXX ±.005	SEE NOTES								
BREAK ALL CORNERS AND SHARP EDGES (R1 MIN)		APPROVAL								
 THIRD ANGLE PROJECTION		DATE		SIZE		DWG. NO. LSV XXX CTP		REV 001		
		DRAWN	K.Howard							4/23/10
		CHECKED	DPZ							5/4/10
PROPRIETARY AND CONFIDENTIAL THE INFORMATION CONTAINED IN THIS DRAWING IS THE SOLE PROPERTY OF VISUAL COMMUNICATIONS COMPANY, INC. AND REPRODUCTION IN PART OR AS A WHOLE WITHOUT THE WRITTEN CONSENT OF VISUAL COMMUNICATIONS COMPANY, INC. IS PROHIBITED.		DO NOT SCALE DRAWING		SCALE: 8:1		SHEET 1 OF 1				

Mouser Electronics

Authorized Distributor

Click to View Pricing, Inventory, Delivery & Lifecycle Information:

VCC:

[LSV080CTP](#) [LSV020CTP](#) [LSV040CTP](#) [LSV120CTP](#) [LSV060CTP](#) [LSV100CTP](#) [LSV_025_CTP](#)