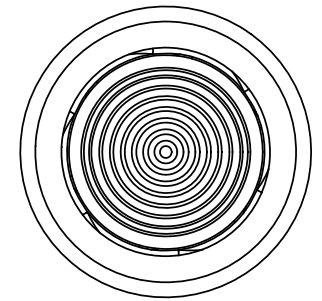
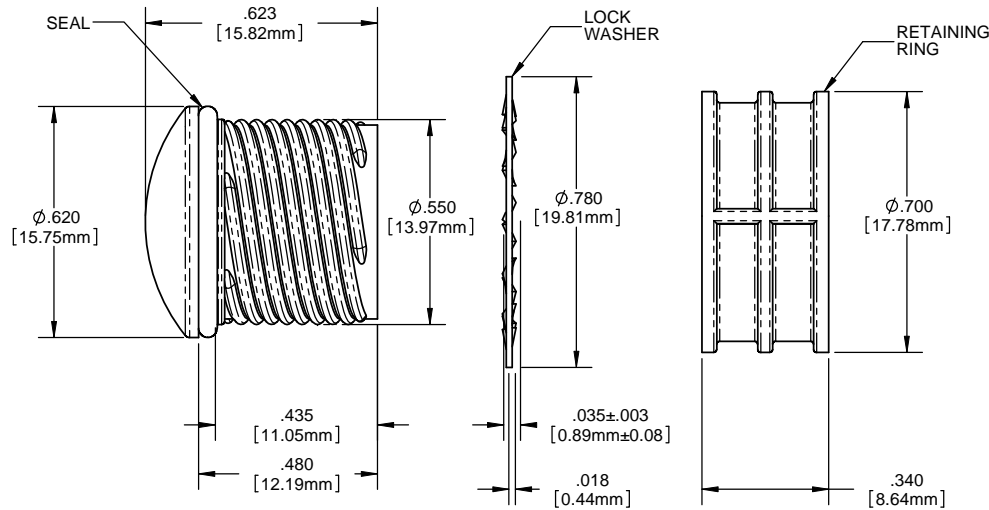
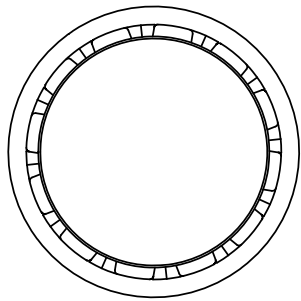


NOTES:

1. MOUNTING: Mounts in a $\phi .562 \pm .002$ [$\phi 16.56\text{mm} \pm .05$] panel hole on .750 [19.05mm] centers. Panel thickness .031 [.8mm] to .187 [4.75mm]. Panel hole should be deburred, but not chamfered.
2. ASSEMBLY: Insert lens through panel hole, slide lock washer onto lens barrel and twist on retaining ring. PCB mounted LEDs slide into lens when the panel cover is closed or the PCB card is inserted into the case.
3. MATERIAL: Lens-Polycarbonate, UL 94-V2
Lock Washer- FH Steel, Nickel plate
Retaining ring - Thermoplastic, U.L. 94 V0 Rated
Seal- EPDM
4. U.S. & Foreign Pat. Issued & Pend.



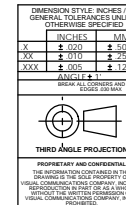
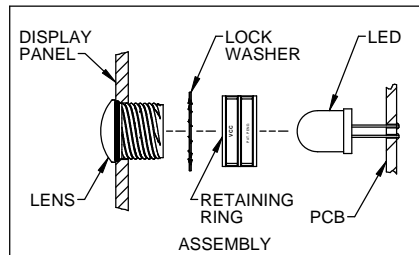
REVISIONS				
ECN#	REV.	DESCRIPTION	DATE	INITIALS
	001	REVISED PER ECR111009AZ01	4-23-10	SMU



ORDERING CODE : **HMS 462 XXX**

MODEL

LENS COLOR	
RTP	RED TRANSPARENT
ATP	AMBER TRANSPARENT
GTP	GREEN TRANSPARENT
BTP	BLUE TRANSPARENT
YTP	YELLOW TRANSPARENT
CTP	CLEAR TRANSPARENT



APPROVAL		DATE
DRAWN:	SMU	4-23-10
CHECKED:	DZ	4-23-10
DO NOT SCALE DRAWING		

VCC OPTOELECTRONICS 190 BOSSTICK BLVD, SUITE 101 SAN MARCOS, CA 92069 U.S.A. PHONE: (760) 560-1300, FAX: (760) 560-1301 EMAIL: vccsales@vccsite.com	
TITLE: 10MM ROUND STANDARD THREADED FRESNEL LENS WITH SEAL	
SIZE B	DWG. NO. HMS 462 XXX
SCALE: 4:1	REV 001
SHEET 1 OF 1	

Mouser Electronics

Authorized Distributor

Click to View Pricing, Inventory, Delivery & Lifecycle Information:

VCC:

[HMS462-RTP](#) [HMS462CTP](#) [HMS462-GTP](#) [HMS462-ATP](#) [HMS_462_ATP](#) [HMS_462_BTP](#) [HMS_462_CTP](#)
[HMS_462_GTP](#) [HMS_462_RTP](#) [HMS_462_YTP](#)