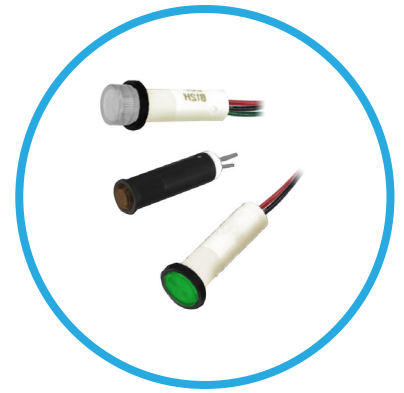


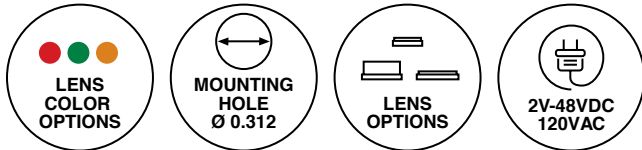
50 Series

Ø .312" (7.92mm)

LED Panel Mount Indicator



Prominent and flush LED indicator with fresnel lens in single and tri-color LED, Voltage 2VDC - 120VAC.



Key Features

- Mounting hole size: .312" (7.92mm)
- Lens type: semi-dome, wide hi-hat, and wide flush with fresnel pattern lens
- Lens color options: red, green, amber, and water clear
- LED single color options: red, amber and green
- Tri-color option: red/amber/green
- Terminals: straight leads or wire leads (6" wire leads, 24 AWG)
- Wire leads: 6.0" total length (nominal) / .50" stripped (nominal), red anode/black cathode, 24 AWG TPB UL1061 insulation
- Voltage: 2-48 VDC or 120VAC
- T-1 3/4 (5mm) LED
- Low power consumption - uses up to 90% less energy than an incandescent indicator
- Offered with a variety of lens options all featured with fresnel pattern lens which provide excellent light focus and assure maximum light output
- Available with a variety of LEDs including AlInGaP and InGaN technology for high brightness applications, single color, tri-color and with integrated resistors
- Mounts with spring retainer and washer (included)
- Offered with black bezel that enhances LED contrast
- Suitable for high vibration applications
- LEDs operate significantly cooler than traditional lamps
- For custom cable length, connectors or colors contact VCC
- Compliant with RoHS and REACH

Ordering Data

53 (Semi-Dome Lens)



Example:

53-NWA120-CAO

53 Series Semi-Dome Lens, Amber LED,
Clear Amber Lens, 120V with Straight Leads

Part Number	Color	λ_{pk} (nm)	Iv (mcd)	Viewing Angle	Lens Color	Lens Diffusion	Terminals	Voltage/Current	
								Design Vf/If	Max Vf/If
53-NWA120-CAO	Amber	592	2800	30	Amber	Clear	Straight Leads	120VAC/3.5mA	130VAC/4mA
53-NWG120-CGO	Green	520	2400	45	Green	Clear	Straight Leads	120VAC/3.5mA	130VAC/4mA
53-NWR120-CRO	Red	634	2800	30	Red	Clear	Straight Leads	120VAC/3.5mA	130VAC/4mA

561 (Wide Hi-Hat Lens)



Example:

561W-RAG2-CWO

561 Series Wide Hi-Hat Lens,
Red/Amber/Green LED, Clear Lens, 2V with Wire Leads

Part Number	Color	λ_{pk} (nm)	Iv (mcd)	Viewing Angle	Lens Color	Lens Diffusion	Terminals	Voltage/Current	
								Design Vf/If	Max Vf/If
561W-RAG2-CWO	Red/Amb/Grn	630/565	6/6/6	60	Clear	Clear	Wire Leads	2V	-

564 (Wide Flush Lens)



Example:

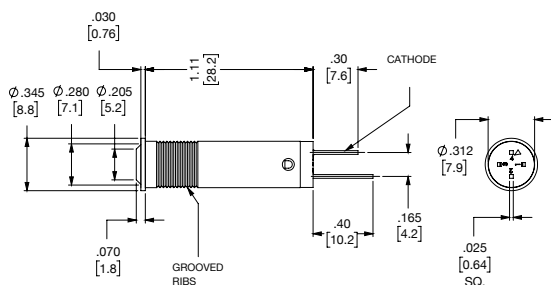
564W-GLP48-CWO-R-

564 Series Wide Flush Lens,
Green LED, Clear Lens, 48V with Wire Leads

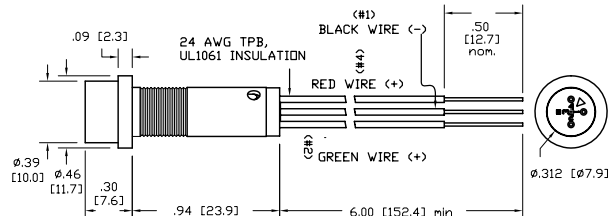
Part Number	Color	λ_{pk} (nm)	Iv (mcd)	Viewing Angle	Lens Color	Lens Diffusion	Terminals	Voltage/Current	
								Design Vf/If	Max Vf/If
564W-NWG120-CGO-R-	Green	520	2400	45	Green	Clear	Wire Leads	120VAC/3.5mA	130VAC/4mA
564W-GLP48-CWO-R-	Green	565	2.3	50	Clear	Clear	Wire Leads	48V	-

Product Dimensions

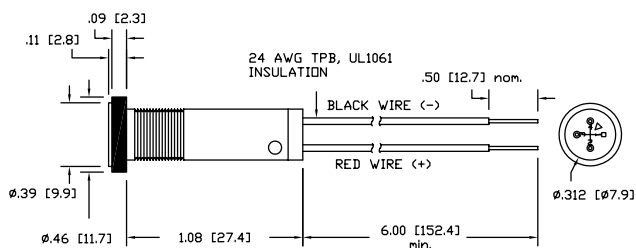
53 (Semi-Dome Lens)



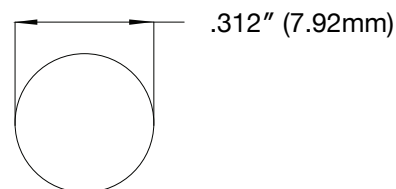
561 (Wide Hi-Hat Lens)



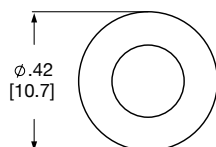
564 (Wide Flush Lens)



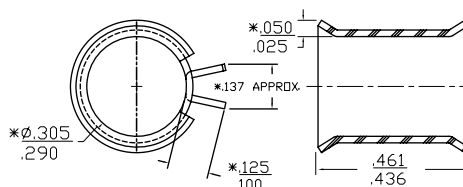
Recommended Mounting Hole



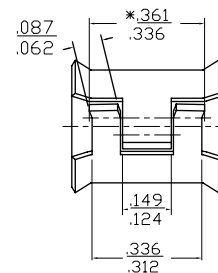
Mounting Hardware



NW5



TC5



Notes:

1. All dimensions are in inches [millimeters]
2. Tolerance is $\pm 0.25''$ unless otherwise noted.
3. The specifications, characteristics and technical data described in the datasheet are subject to change without prior notice.

Compliances and Approvals



Mouser Electronics

Authorized Distributor

Click to View Pricing, Inventory, Delivery & Lifecycle Information:

VCC:

[53-NWA120-CAO](#) [53-NWG120-CGO](#) [53-NWR120-CRO](#)