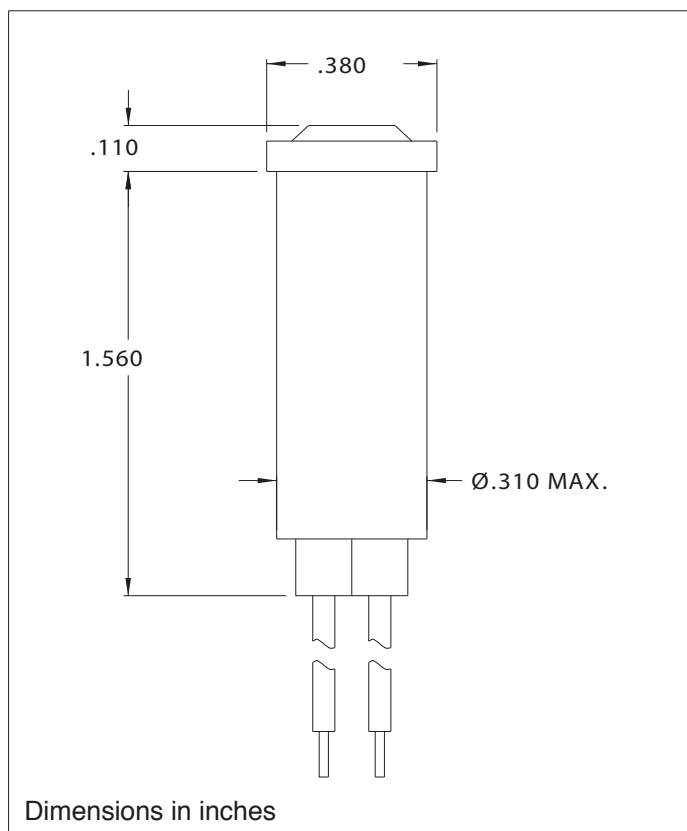




2120A and 2121A Series Non-Relampable Neon Lights



Lens Color	Neon	
	Model No. (105-125VAC)	Model No. (208-250VAC)
Red	2120A1	2121A1
Amber	2120A3	-
White	2120A4	-
Lamp used	C2A+Resistor	C2A+Resistor

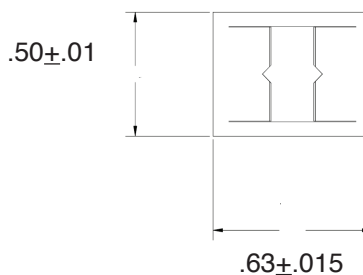
Mounting: Ø.310" MIN., supplied with push-on speednut SN1287-C.

Wire Leads: No. 22 AWG (105°C), 4.40/4.80 long, stripped .430/.570.

Lens: Polycarbonate

Housing: White Nylon

Speed Nut SN1287-C:



Dimensions in inches

Underwriters Laboratories (UL Recognized) File No. E20356

Compliance & Approvals



Mouser Electronics

Authorized Distributor

Click to View Pricing, Inventory, Delivery & Lifecycle Information:

VCC:

[2120A4](#) [2120A3](#) [2120A1](#) [2121A1](#) [2120C33](#)