



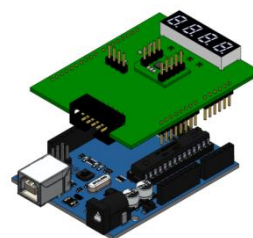
IQS620EV01 Overview

Combination sensor with dual channel capacitive proximity/touch, Hall-effect sensor and inductive sensing

The IQS620 ProxFusion™ IC is a multifunctional capacitance, Hall-effect & inductance sensor designed for applications where any or all of the technologies may be required. The IQS620 is an ultra-low power solution designed for short or long term activations through any of the sensing channels. The IQS620 is fully I²C compatible and can be configured to output main trigger events on GPIOs.

EV-Kit Overview

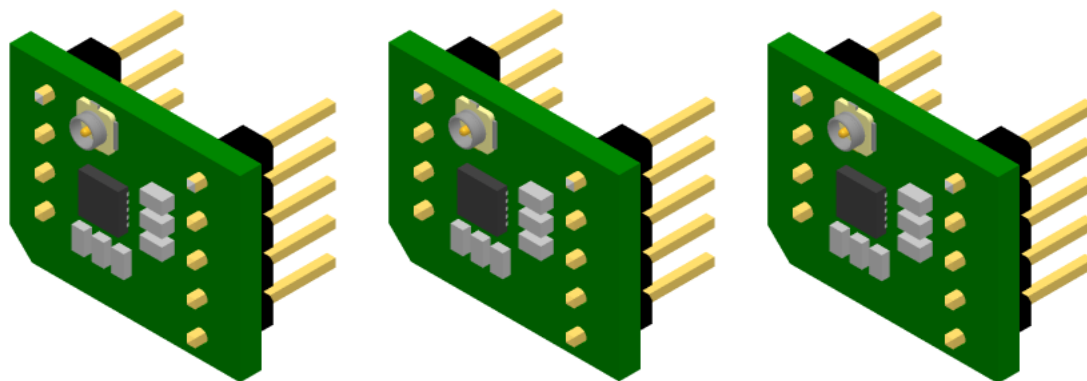
- Inductive sensing
- Hall-effect sensing
- Capacitive sensing



**IQS620 Shield + Arduino Uno –
sold separately**

Evaluation Modes

- EV01 contains **3 x Modules**
- Embed the small module PCB (stamp) into custom design & interface to host MCU
- Plug into IQS620EV02 Shield board (sold separately)



Detachable Stamp Module x 3

Applications

- Mobile electronics (phones/tablets)
- SAR safety requirements for laptops, tablets and phones
- Wearable devices
- White goods and appliances
- Human Interface Devices
- Proximity activated backlighting
- Applications with long-term activation
- Aftermarket automotive¹

¹ The part is not automotive qualified

Mouser Electronics

Authorized Distributor

Click to View Pricing, Inventory, Delivery & Lifecycle Information:

[Azoteq:](#)

[IQS620AEV01-S](#)