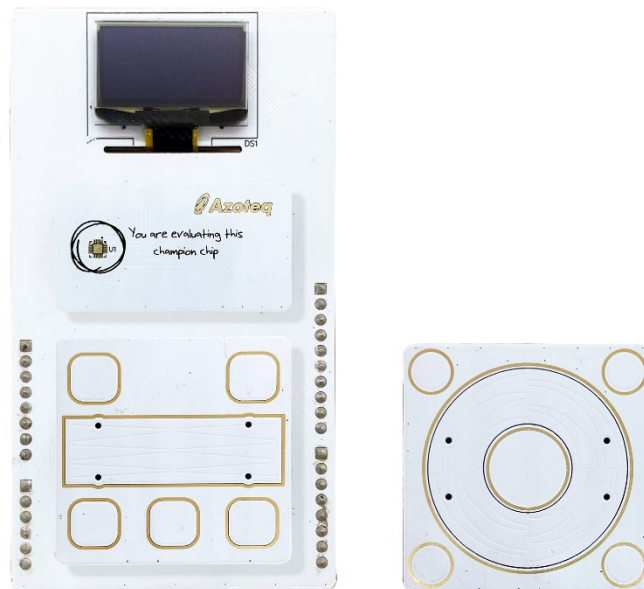




IQS7222C USER GUIDE

IQ Switch® - ProxFusion® Series



*CT210A is only included
in the EV04 kit*



Table of Contents

IQS7222C USER GUIDE.....	1
1 INTRODUCTION	3
2 SETTING UP FOR THE IQS7222C EV KIT	4
3 STAMP BOARD AND IQS7222C IC.....	5
4 BUTTONED SLIDER BOARD	6
5 BUTTONED WHEEL BOARD.....	8
6 REFERENCE DESIGNS	10



1 Introduction

This user guide describes the operation of the IQS7222C Evaluation Kit. The EV-Kit consists of 5 parts: stamp board, connector board, base board, Buttoned Slider board and Buttoned Wheel board. To visualise raw data from the EV-Kit, the stamp board can be interfaced to any personal computer with USB support, and IQS7222C software Graphical User Interface (GUI). The purpose of the IQS7222C EV-Kit is to help application and development engineers in evaluating the IQS7222C slider and wheel capabilities. These capabilities will be shown using 2 button board designs. A picture of the evaluation kit is shown below.



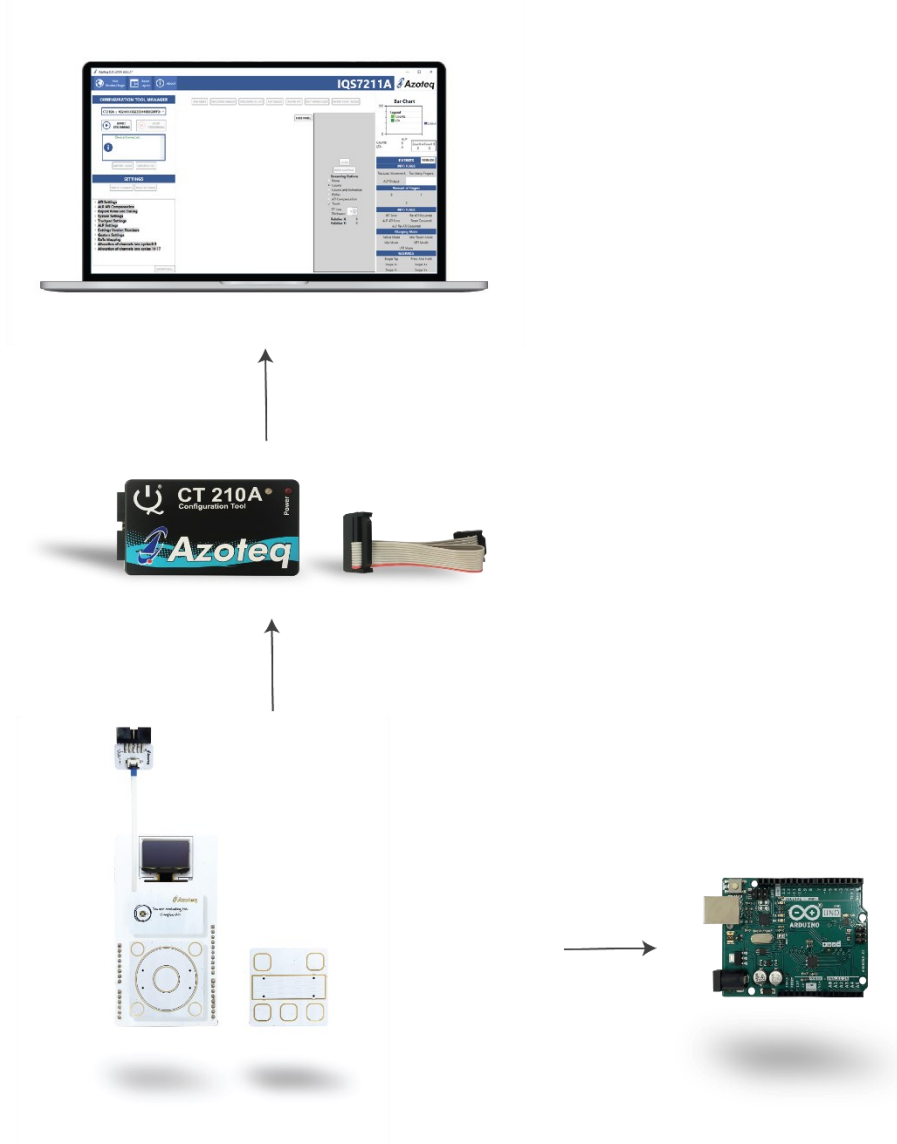
Figure 1-1: Base board (left), stamp (centre top), Buttoned Slider (centre middle), Buttoned Wheel (centre bottom) and connector board (right)



2 Setting up for the IQS7222C EV Kit

To interface the IQS7222C Evaluation Kit to a PC we advise using the CT210A (CT210A is sold with EV04 kit, but sold separately from EV02 kit). This EV Kit can be setup with the following steps:

- > Connect the CT210A to the PC with a USB cable (use USB data cable only)
- > Plug the ribbon cable into the CT210A
- > Connect the connector board to the ribbon cable
- > Connect the 6 way cable into connector board on one end and on the stamp board at the other
- > Plugin stamp board onto base board
- > Plugin Buttoned Slider or Buttoned Wheel board onto base board



Run the IQS7222C GUI (latest version available from the Azoteq.com website)



3 Stamp Board and IQS7222C IC

The IQS7222C IC is located on the stamp board.

Run the IQS7222C GUI.

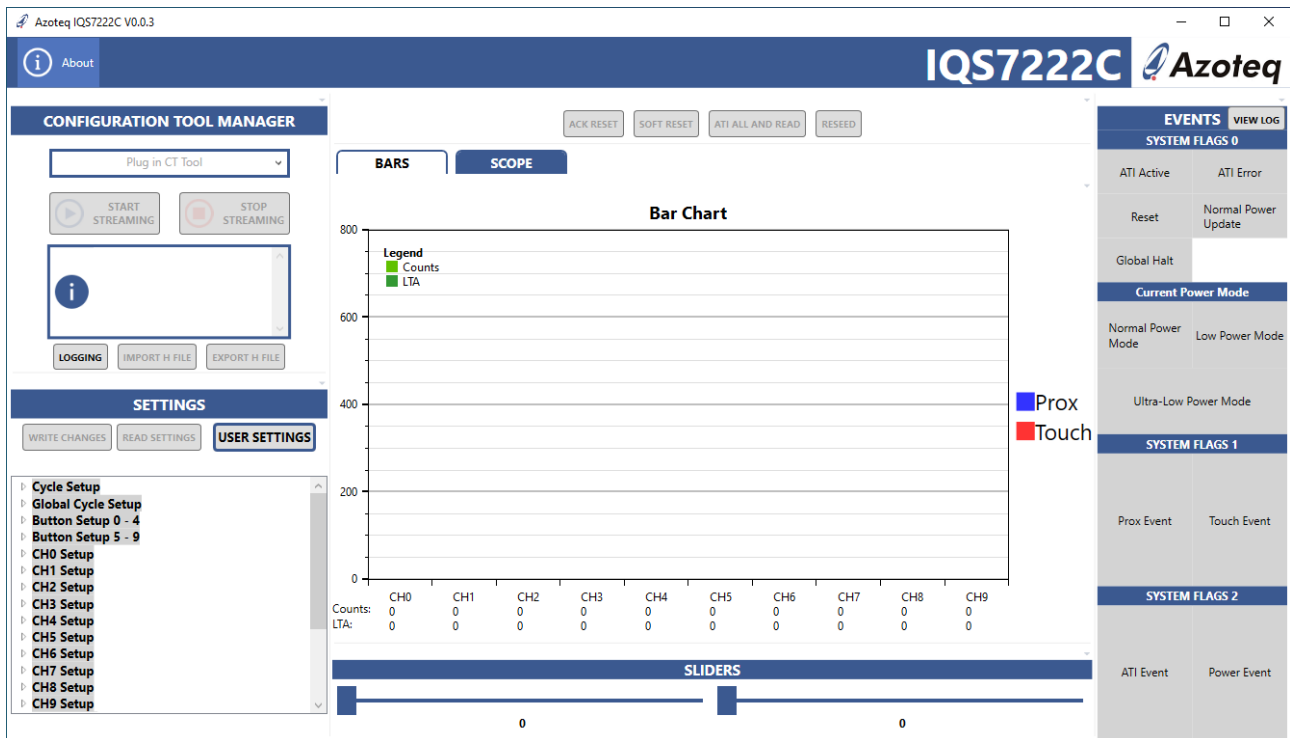


Figure 3-1: IQS7222C GUI at start-up

In order to demonstrate the capabilities of the IQS7222C, we suggest evaluating with the supplied button boards. After this evaluation, the user may want to develop their own button boards.



4 Buttoned Slider Board

Plug this board into the base board at the PLUGIN marked area.



Figure 4-1: Buttoned Slider Board connected to base board



Now perform the following actions in the GUI.

- > Click the “Start Streaming” button
- > Click “Import H file”
- > Browse to “IQS7222C_ButtonSlider.h” and select “Open”
- > Click on the “ACK RESET” button
- > Click on the “ATI ALL AND READ” button

The GUI will load the configuration settings for the Buttoned Slider board. Sample screenshot below.

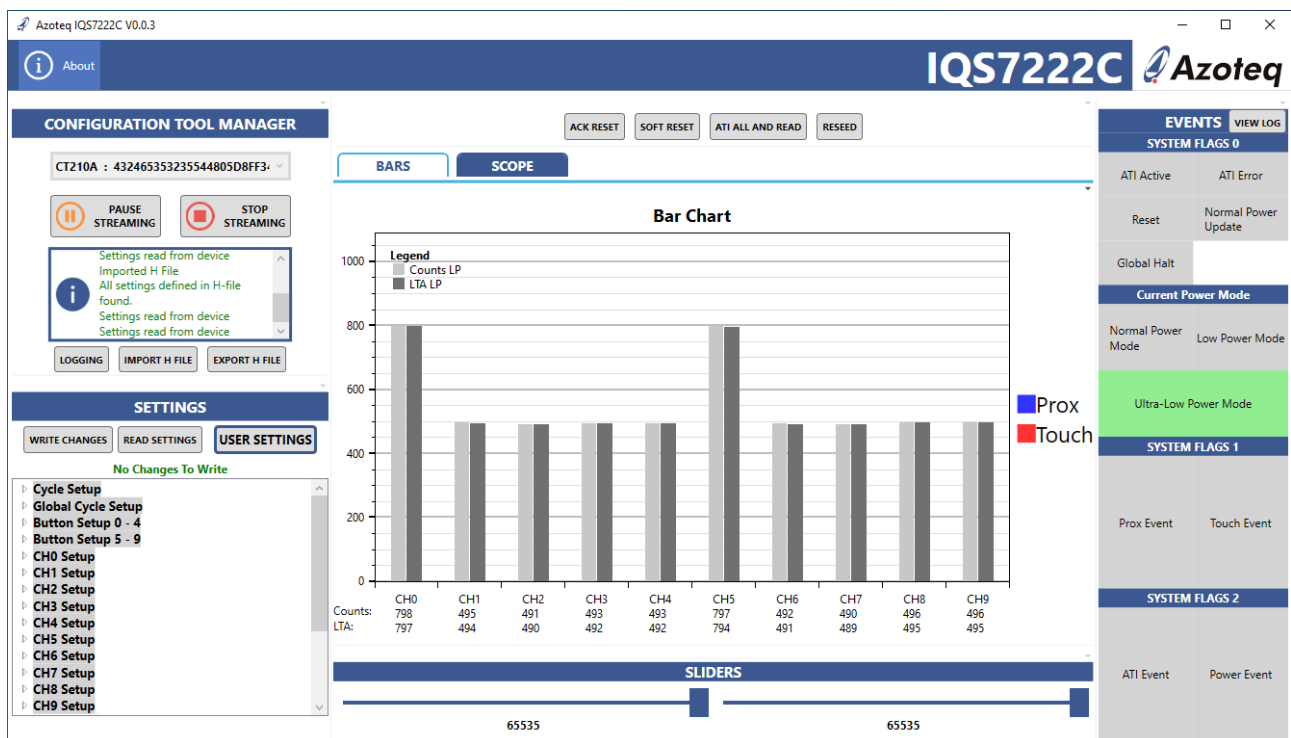


Figure 4-2: IQS7222C GUI loaded with Buttoned Slider settings

The IQS7222C and Buttoned Slider Board can now be evaluated and observing what happens in the GUI.



5 Buttoned Wheel Board

Remove the current plug-in board and plug-in the Buttoned Wheel board.



Figure 5-1: Buttoned Wheel board connected to base board



Now perform the following actions in the GUI.

- > Click the “Start Streaming” button
- > Click “Import H file”
- > Browse to “IQS7222C_Button_Wheel.h” and select “Open”
- > Click on “ACK RESET” button
- > Click on “ATI ALL AND READ” button

The GUI will load the configuration settings for the Buttoned Wheel board. Sample screenshot below.

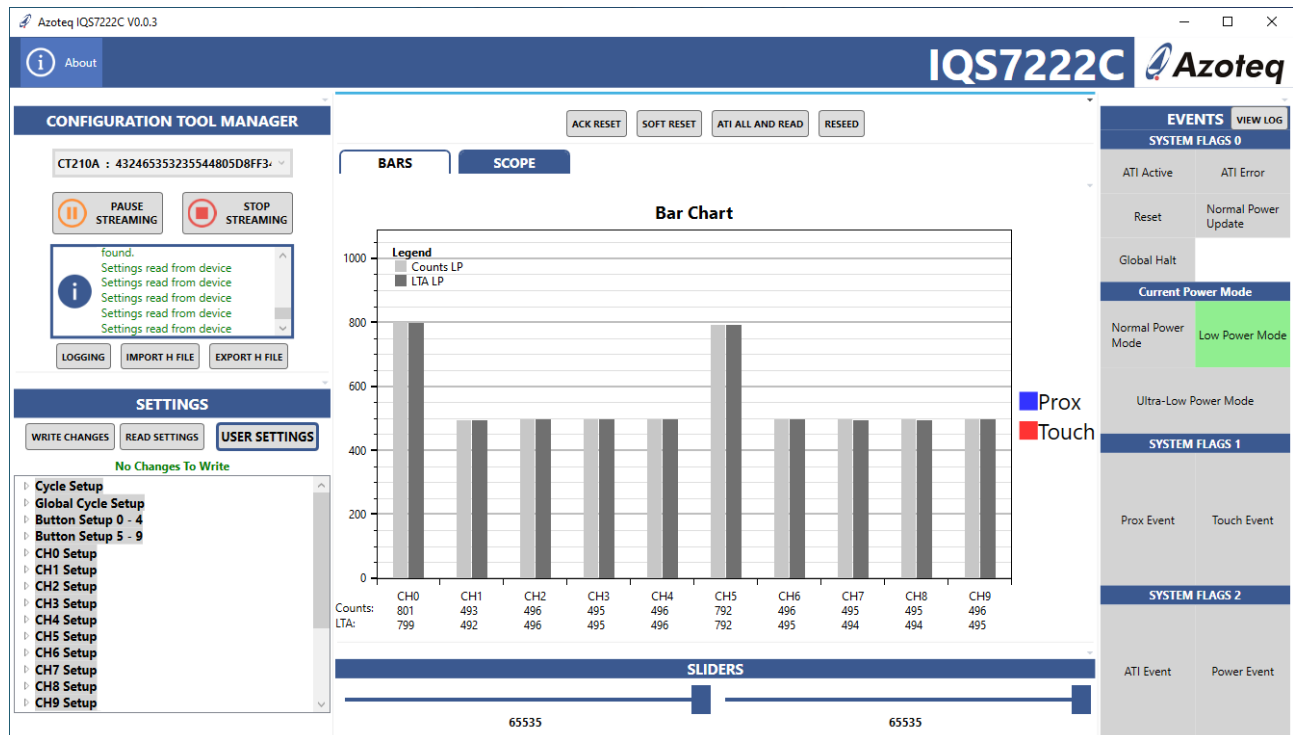


Figure 5-2 IQS7222C GUI loaded with Buttoned Wheel settings

The IQS7222C and Buttoned Wheel board can now be evaluated.



6 Reference Designs

For further technical detail the datasheet should be consulted and can be found at the Azoteq website. Some reference designs for this EV-Kit are shown below.

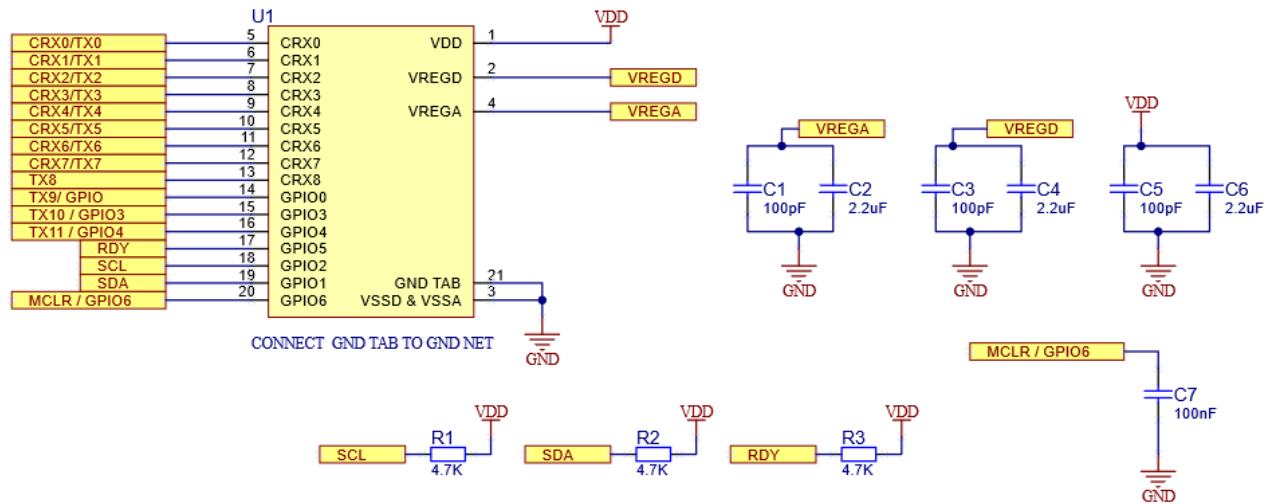



Figure 6-1 IQS7222C Stamp layout



	USA	Asia	South Africa
Physical Address	11940 Jollyville Suite 120-S Austin TX 78750 USA	Room 501A, Block A, T-Share International Centre, Taoyuan Road, Nanshan District, Shenzhen, Guangdong, PRC	1 Bergsig Avenue Paarl 7646 South Africa
Postal Address	11940 Jollyville Suite 120-S Austin TX 78750 USA	Room 501A, Block A, T-Share International Centre, Taoyuan Road, Nanshan District, Shenzhen, Guangdong, PRC	PO Box 3534 Paarl 7620 South Africa
Tel	+1 512 538 1995	+86 755 8303 5294 ext 808	+27 21 863 0033
Email	info@azoteq.com	info@azoteq.com	info@azoteq.com

Visit www.azoteq.com
for a list of distributors and worldwide representation.

Patents as listed on www.azoteq.com/patents-trademarks/ may relate to the device or usage of the device.

Azoteq®, Crystal Driver®, IQ Switch®, ProxSense®, ProxFusion®, LightSense™, SwipeSwitch™, and the  logo are trademarks of Azoteq.

The information in this Datasheet is believed to be accurate at the time of publication. Azoteq uses reasonable effort to maintain the information up-to-date and accurate, but does not warrant the accuracy, completeness or reliability of the information contained herein. All content and information are provided on an "as is" basis only, without any representations or warranties, express or implied, of any kind, including representations about the suitability of these products or information for any purpose. Azoteq disclaims all warranties and conditions with regard to these products and information, including but not limited to all implied warranties and conditions of merchantability, fitness for a particular purpose, title and non-infringement of any third party intellectual property rights. Azoteq assumes no liability for any damages or injury arising from any use of the information or the product or caused by, without limitation, failure of performance, error, omission, interruption, defect, delay in operation or transmission, even if Azoteq has been advised of the possibility of such damages. The applications mentioned herein are used solely for the purpose of illustration and Azoteq makes no warranty or representation that such applications will be suitable without further modification, nor recommends the use of its products for application that may present a risk to human life due to malfunction or otherwise. Azoteq products are not authorized for use as critical components in life support devices or systems. No licenses to patents are granted, implicitly, express or implied, by estoppel or otherwise, under any intellectual property rights. In the event that any of the abovementioned limitations or exclusions does not apply, it is agreed that Azoteq's total liability for all losses, damages and causes of action (in contract, tort (including without limitation, negligence) or otherwise) will not exceed the amount already paid by the customer for the products. Azoteq reserves the right to alter its products, to make corrections, deletions, modifications, enhancements, improvements and other changes to the content and information, its products, programs and services at any time or to move or discontinue any contents, products, programs or services without prior notification. For the most up-to-date information and binding Terms and Conditions please refer to www.azoteq.com.

Mouser Electronics

Authorized Distributor

Click to View Pricing, Inventory, Delivery & Lifecycle Information:

[Azoteq:](#)

[IQS7222CEV02-S](#) [IQS7222CEV04-S](#)