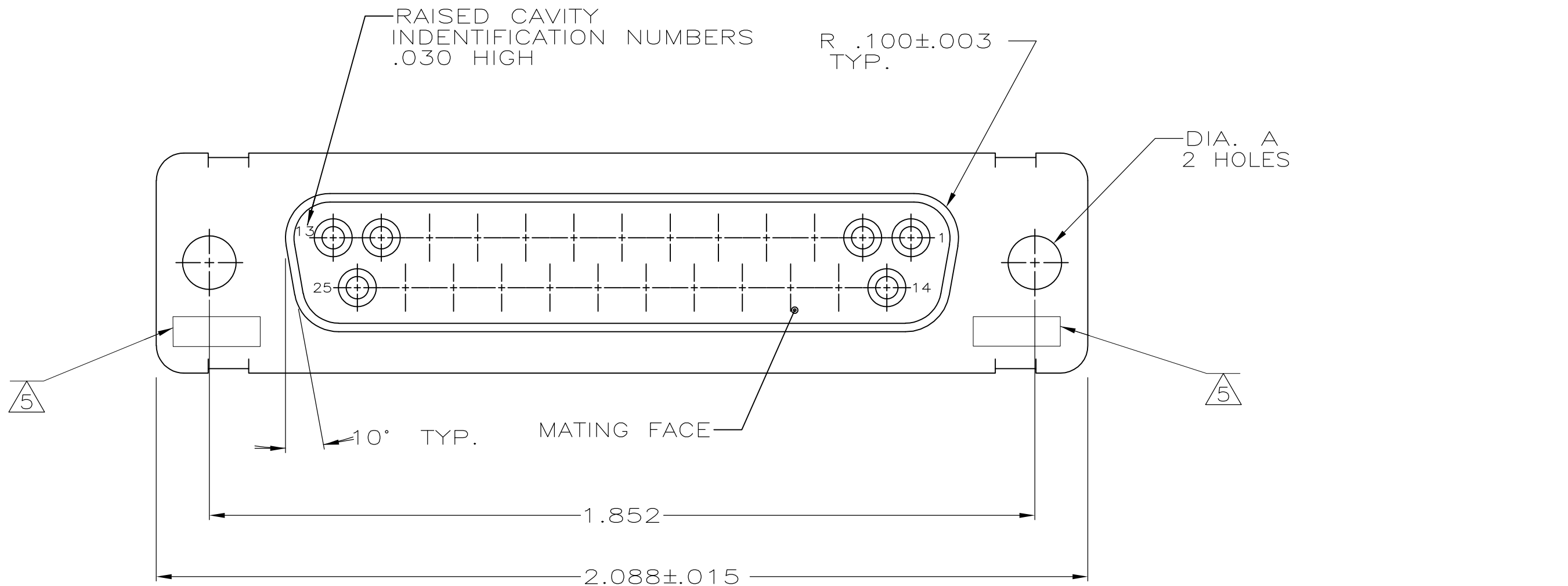
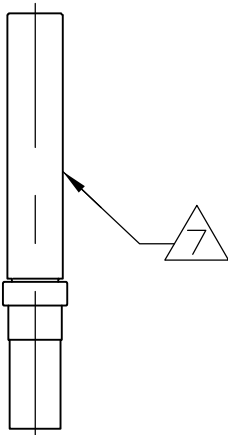
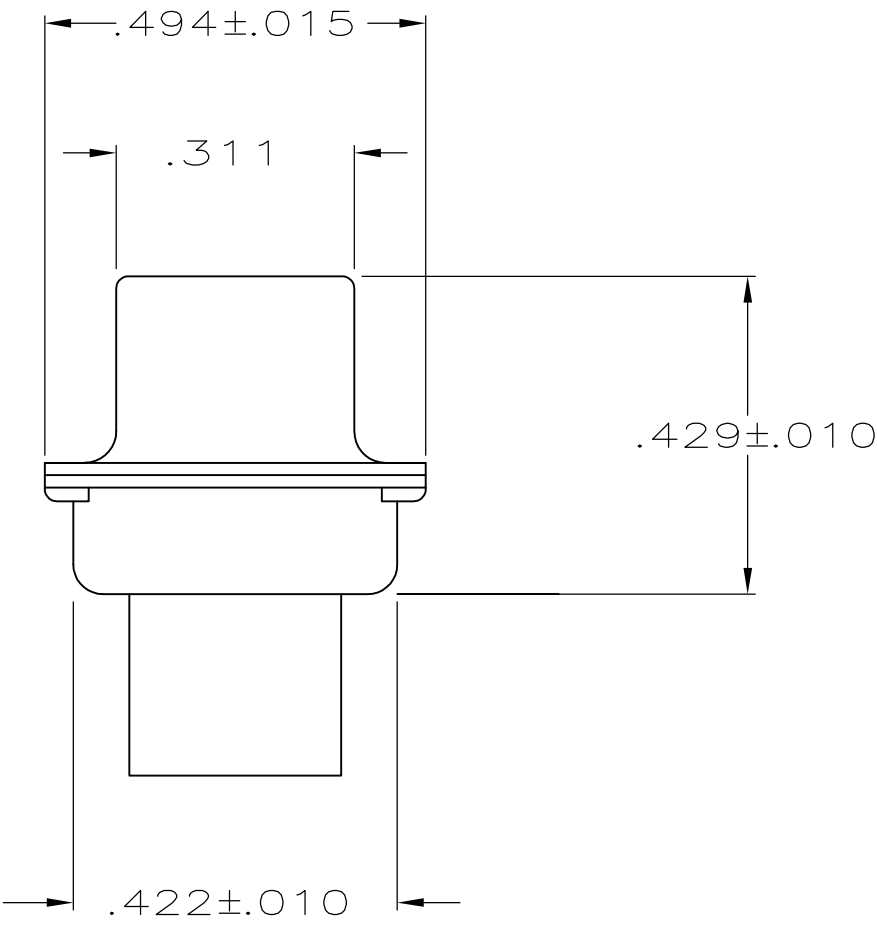
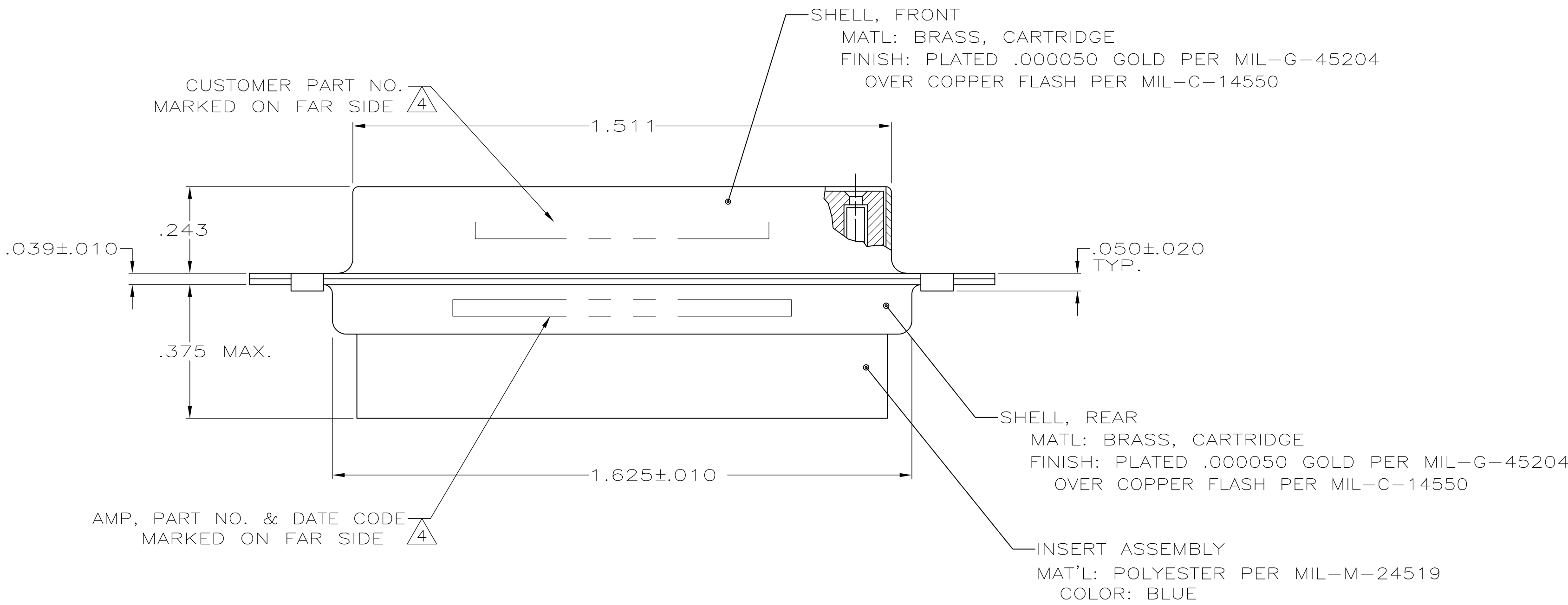


LOC		DIST		REVISIONS					
—		—		P	LTR	DESCRIPTION	DATE	DWN	APVD
					N	REV PER ECO 11-017711	10-18-11	CT	RL



1. THIS RECEPTACLE WILL MATE WITH ANY PLUG CONNECTOR WITH THE SAME INSERT ARRANGEMENT AS DEFINED BY MS18275-1.
2. MAXIMUM WIRE INSULATION USED WITH THIS RCPT. IS .072 DIA. MAX.
3. Be-Cu RETENTION CLIPS ARE INCLUDED IN INSERTS.
- 4 FAR SIDE REFERS TO WIDE SIDE OF KEYSTONE.
- 5 UL/CSA DESIGNATION STAMPED IN THIS AREA,OPTIONAL
- 6 THESE CONNECTORS ARE QUALIFIED TO GODDARD SPACE FLIGHT CENTER SPECIFICATION S-311-P-4.
- 7 CONNECTOR SUPPLIED WITH CONTACTS, AMP PART NUMBER 206793-1; (NOT INSTALLED).



OBSOLETE	4	.120	LMSC 1621480-003	206801-8
		.120	LMSC 1621480-003	206801-7
		.120	2A014-008V-001	206801-4
		.154		206801-3
	6	.120	311P409-3S-B-12	206801-2
	6	.154	311P409-3S-B-15	206801-1
REMARKS		DIA A	MARK CUSTOMER P/N	AMP P/N

THIS DRAWING IS A CONTROLLED DOCUMENT.		DWN M. CLOUSER 1-3-89	TE Connectivity	
DIMENSIONS: INCHES		CHK T. CANTLIN 1-24-89	NAME	
TOLERANCES UNLESS OTHERWISE SPECIFIED:		APVD	PRODUCT SPEC	
0 PLC ± -			APPLICATION SPEC	
1 PLC ± -			SIZE	
2 PLC ± -			CAGE CODE	
3 PLC ± .005			DRAWING NO	
4 PLC ± -			RESTRICTED TO	
ANGLES ± -			A1 00779C=206801	
MATERIAL SEE CALLOUTS		WEIGHT -	CUSTOMER DRAWING	
SEE CALLOUTS			SCALE 4:1 SHEET 1 OF 1 REV N	

# Mouser Electronics

Authorized Distributor

Click to View Pricing, Inventory, Delivery & Lifecycle Information:

[TE Connectivity:](#)

[311P409-3S-B-12](#)