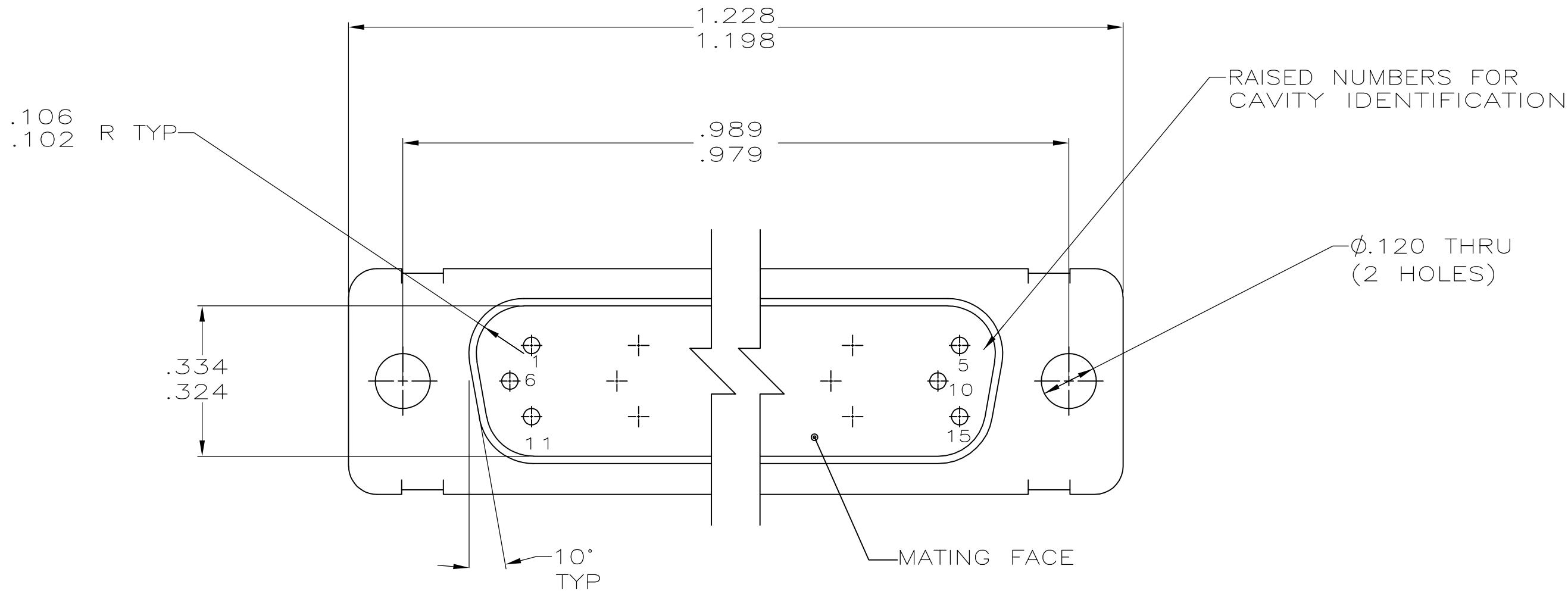
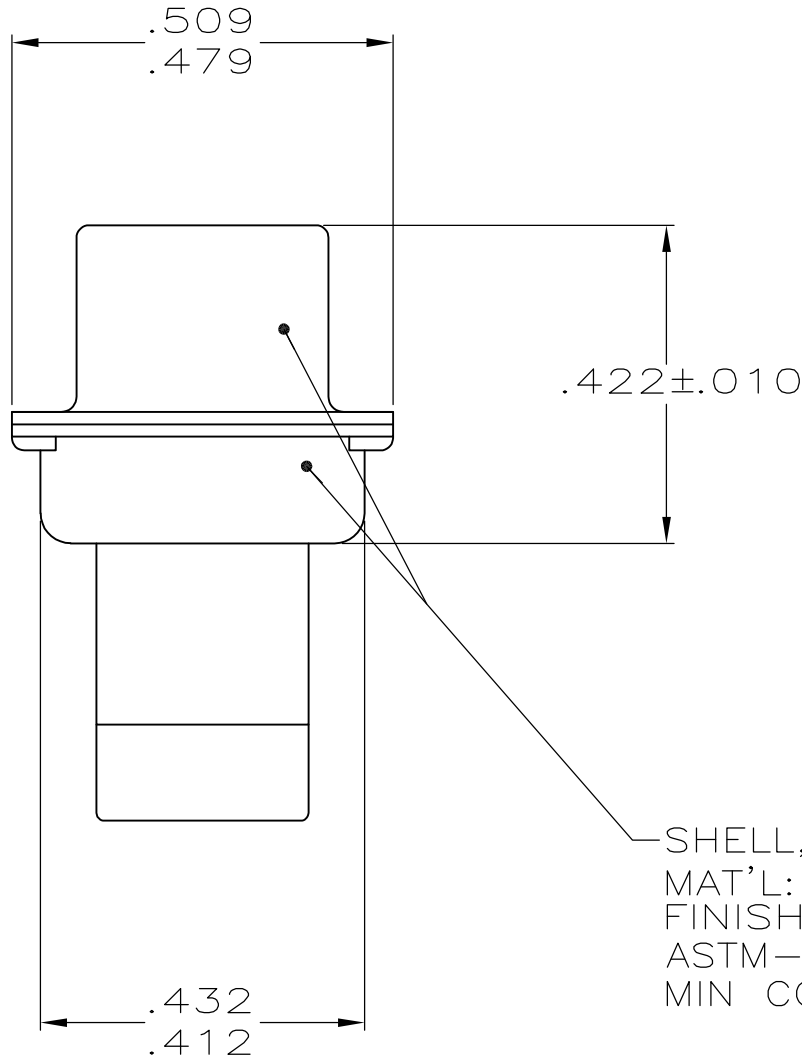
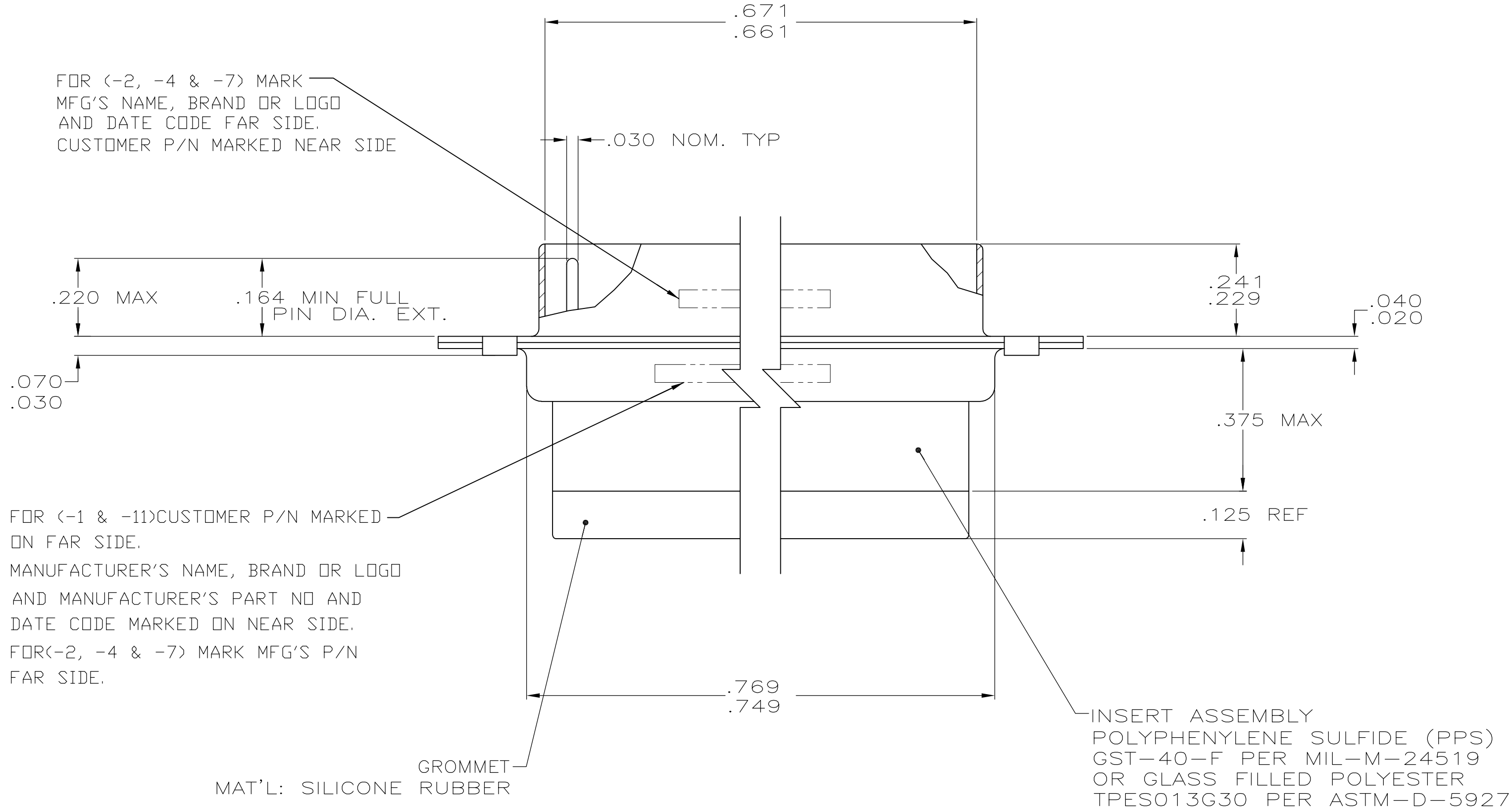


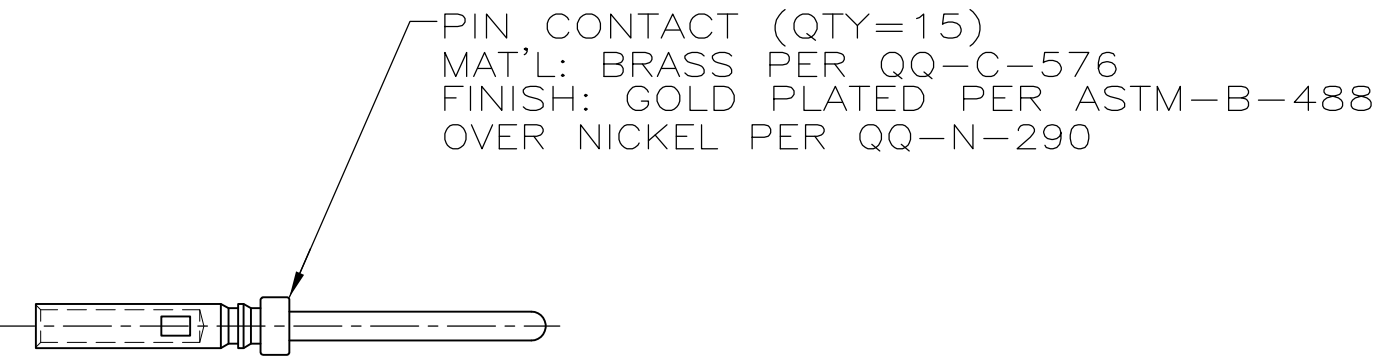
LOC		DIST		REVISIONS			
P	F	L	TR	DESCRIPTION	DATE	DWN	APVD
	R			REV PER ECO-11-001056	17FEB11	PY	RL



1. THIS PLUG WILL MATE WITH ANY SIZE 1, 15 POSN. RCPT. IN AMPLIMITE SERIES.
2. CONNECTOR SUPPLIED WITHOUT CONTACTS; SHOWN FOR ILLUSTRATION ONLY.
3. BE-CU RETENTION CLIPS ARE INCLUDED IN INSERT AND INSTALLED WITH TINES POINTING TOWARDS MATING FACE.
4. OVERALL DIMENSIONS DO NOT INCLUDE RAISED CAVITY IDENTIFICATION.
5. MARKING FAR SIDE REFERS TO WIDE SIDE OF KEYSTONE. NEAR SIDE REFERS TO NARROW SIDE OF KEYSTONE.
6. ONLY PART NO. 211673-7 IS SUPPLIED WITH CONTACTS.
7. 100% INSPECTION REQUIRED PER BOEING 1B01:
A. VISUAL
B. DWV
C. IR
8. CUSTOMER REQUIRES SINGLE LOT DATE CODE.
9. SPECIAL REQUIREMENTS:
A. TEST TWO CONNECTORS PER LOT FOR COMPLIANCE TO GROMMET PEEL STRENGTH REQUIREMENTS.
B. TEST ALL CIRCUIT CAVITIES FOR MISALIGNMENT OR EXCESSIVE ADHESIVE.



SHELL, FRONT & REAR
MAT'L: BRASS PER ASTM B-19
FINISH: GOLD PLATED PER
ASTM-B-488 OVER 0.000100
MIN COPPER PER AMS 2418



7	8	1B01-031PHW	1-211673-1
6		B010648-0001	211673-7
		-	211673-4
9	8	2A065-013V	211673-2
		1B01-031	211673-1
REMARKS		CUSTOMER PART NO.	PART NO.

THIS DRAWING IS A CONTROLLED DOCUMENT.		DWN J. KAISER CHK L. OH	3-11-04 3-25-04	Tyco Electronics Corporation Harrisburg, PA 17105-3608	
DIMENSIONS: INCHES		TOLERANCES UNLESS OTHERWISE SPECIFIED:		NAME	
0 PLC ± -		1 PLC ± -		PRODUCT SPEC	
2 PLC ± -		3 PLC ± .005 [0.13]		APPLICATION SPEC	
4 PLC ± -		ANGLES ± -		SIZE	
MATERIAL SEE CALLOUTS		FINISH SEE CALLOUTS		WEIGHT	
				CUSTOMER DRAWING	
				SCALE 4:1	
				SHEET 1 OF 1	
				REV	

Mouser Electronics

Authorized Distributor

Click to View Pricing, Inventory, Delivery & Lifecycle Information:

[TE Connectivity:](#)

[211673-1](#)