

# PROPERTY OF DEUTSCH E.C.D.

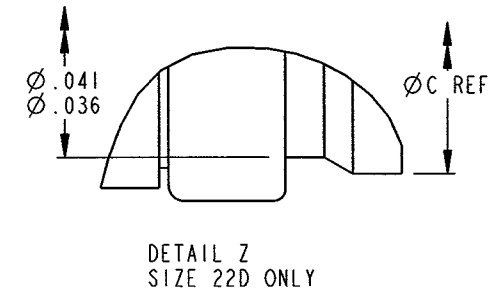
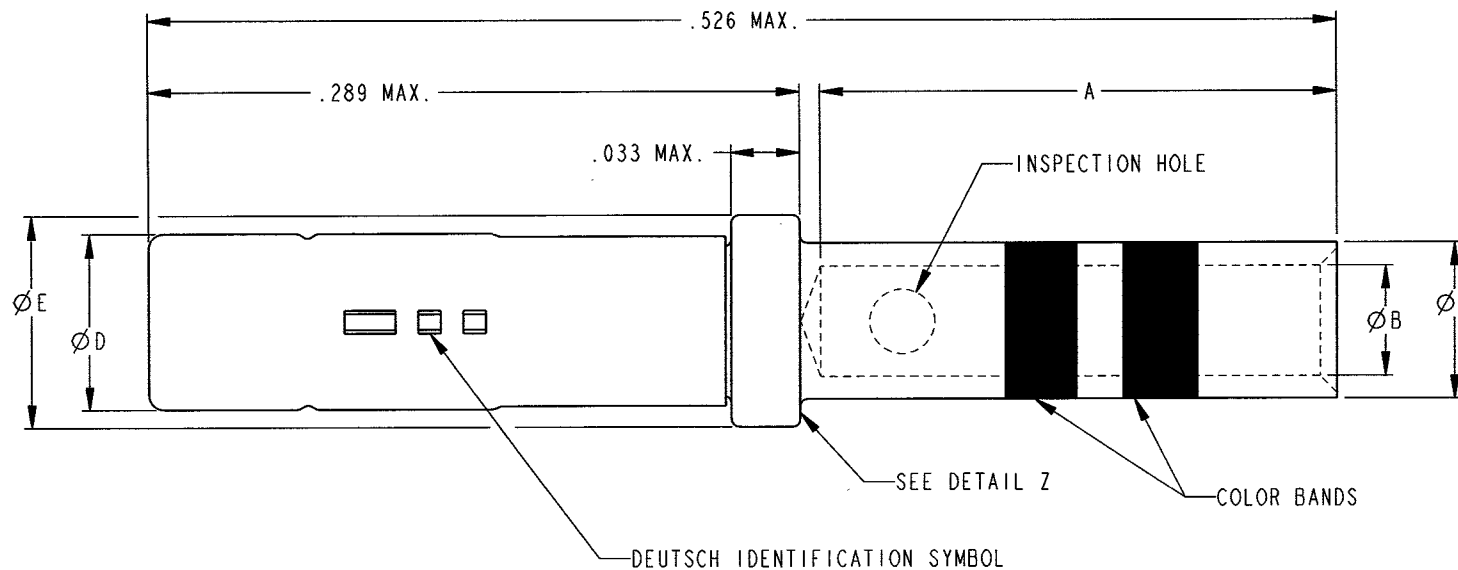
This drawing contains proprietary information that shall not be disclosed, duplicated, nor used in whole or in part for any purpose other than to evaluate this drawing.

B

12336-\*\*

## REVISIONS

REV	DESCRIPTION	DATE	APPROVED
B	REVISED PER E.O. C6444	060222	DM



DEUTSCH PART NUMBER **	SIZE	A MIN.	ØB MIN.	ØC MAX.	ØD MAX.	ØE MAX.	WIRE GAGE RANGE	RECOMMENDED STRIP LENGTH	CRIMP TOOL - MS		COLOR OF BANDS
									TOOL BASIC CRIMPING	POSITIONER	
12336-22	22D	.141	.0335	.048	.062	.062	22, 24, 26, 28	.160 TO .190	M22520/2-01 M22520/7-01	M22520/2-06 M22520/7-06	GREEN
12336-20	20	.209	.046	.070	.078	.094	20, 22, 24	.230 TO .260	M22520/7-01 M22520/2-01 M22520/1-01	M22520/7-08 M22520/2-10 M22520/1-04	RED
12336-16	16	.209	.066	.103	.113	.130	16, 18, 20	.230 TO .260	M22520/1-01 M22520/7-01	M22520/1-04 M22520/7-04	BLUE
12336-12	12	.209	.098	.151	.161	.182	12 AND 14	.230 TO .260	M22520/1-01	M22520/1-04	YELLOW

3. MATERIAL - SOCKET CONTACT BODY: COPPER ALLOY  
SLEEVE: STAINLESS STEEL

2. FINISH - CONTACT BODY: DEUTSCH COAT V  
SLEEVE: PASSIVATED

1. DIMENSIONS ARE IN INCHES UNLESS OTHERWISE SPECIFIED.

NOTES:

SIGNATURE & DATE	
DR	J. FRIEDHOF 2-2-99
CHK	M.K. 2/2/99
PE	J. FRIEDHOF 2-2-99
APPD	<i>[Signature]</i> 060224
SCALE	WT NONE

CONTACTS, SOCKET  
AS39029/57 TYPE  
CRIMP TYPE  
HIGH DURABILITY  
SIZE 22D THRU 12  
ENVELOPE

CP	---	MATL CODE
<b>DEUTSCH</b> ENGINEERED CONNECTING DEVICES 5733 W. Whittier Ave. Hemet, California		
A	12336-**	
DWG SIZE	CODE 11139	SHEET   OF

# Mouser Electronics

Authorized Distributor

Click to View Pricing, Inventory, Delivery & Lifecycle Information:

[TE Connectivity:](#)

[12336-22](#) [12336-12](#) [12336-20](#)