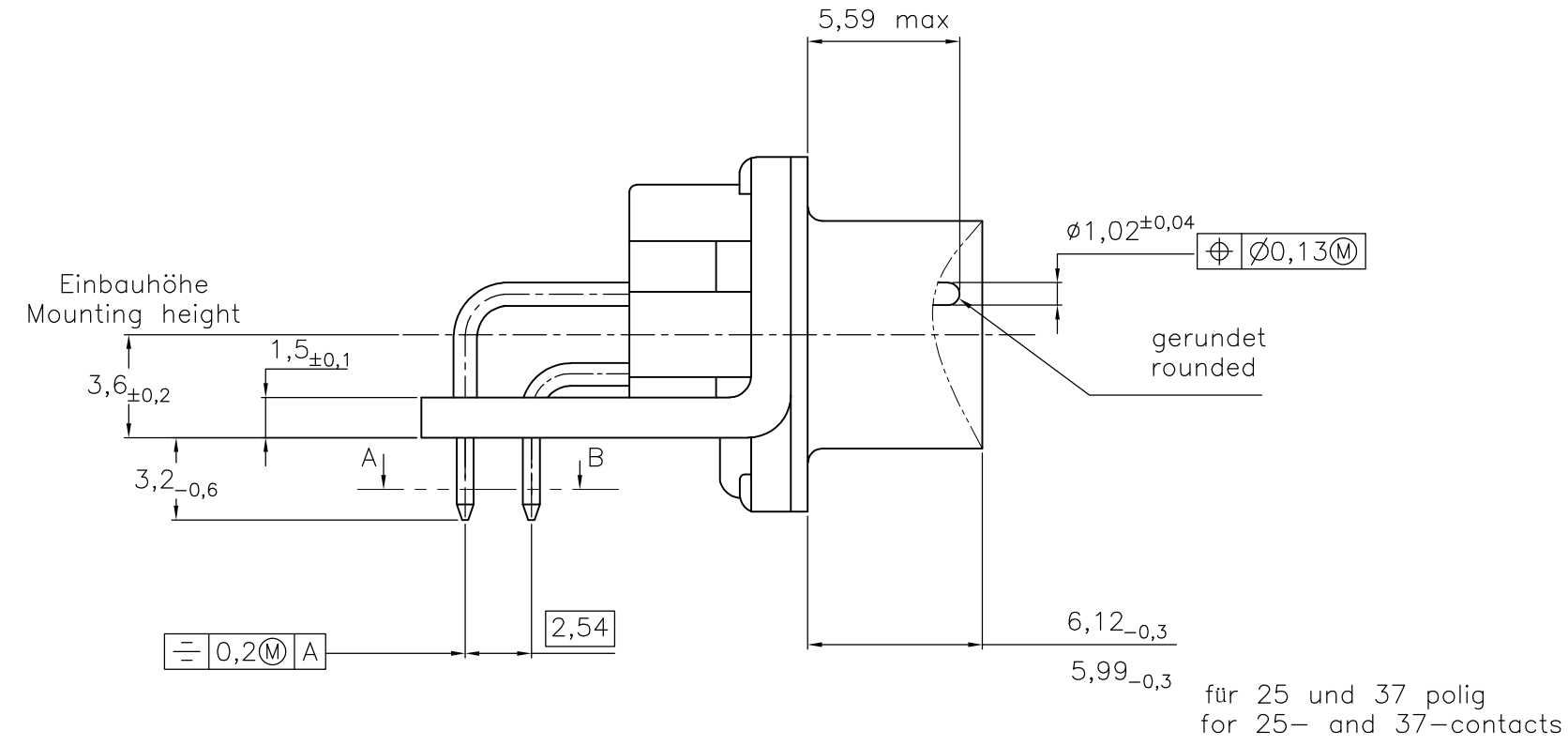
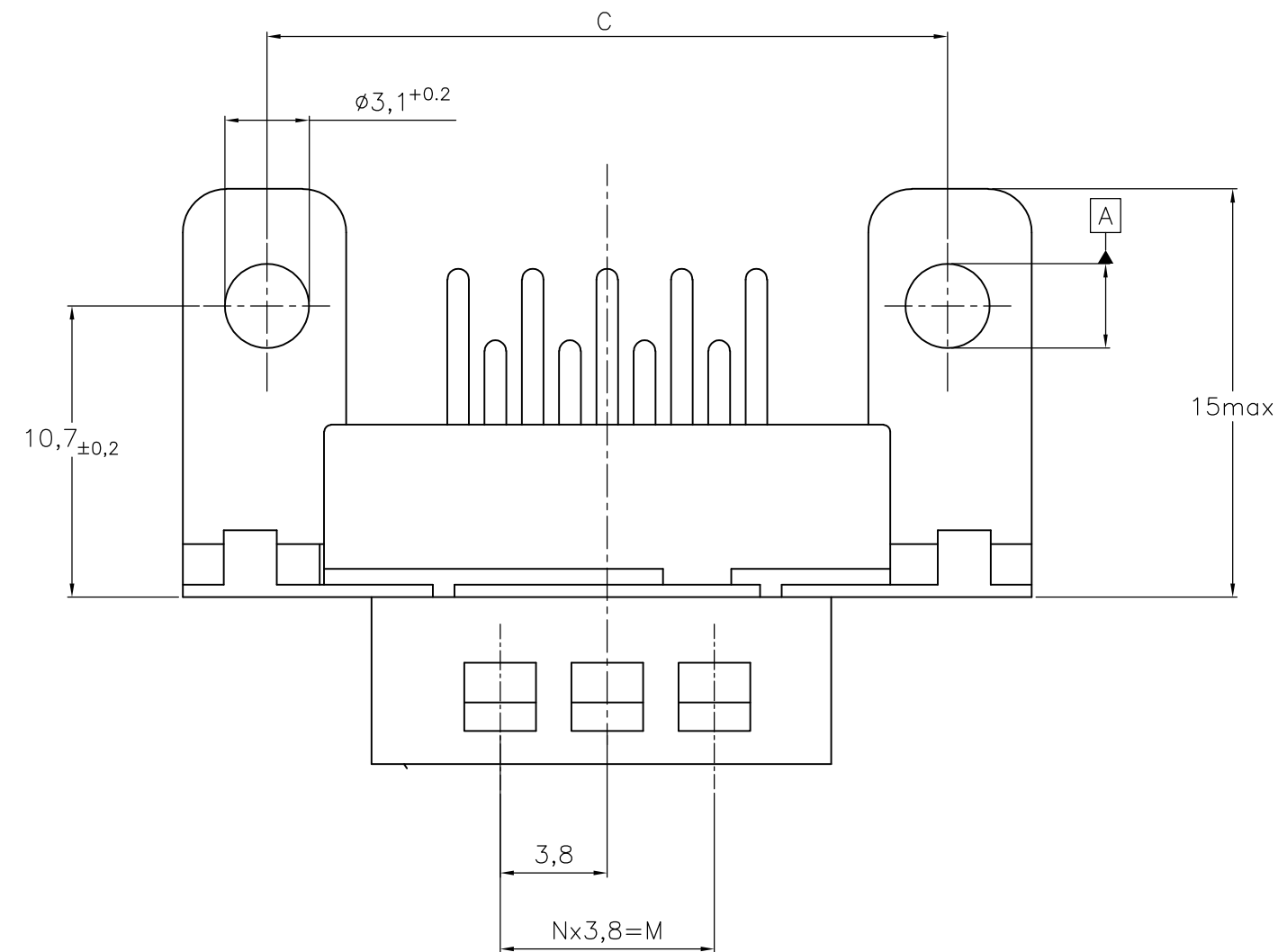
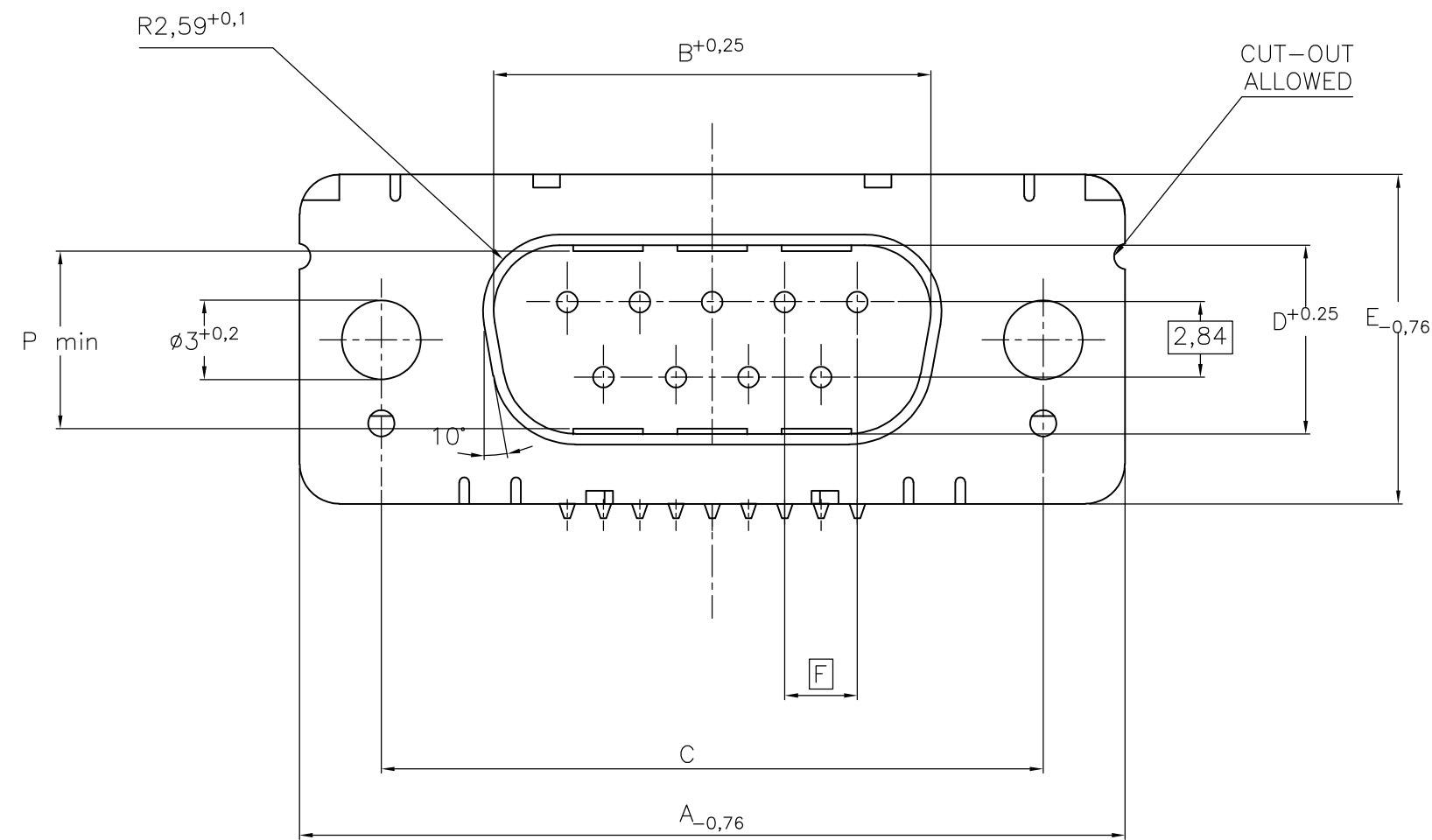
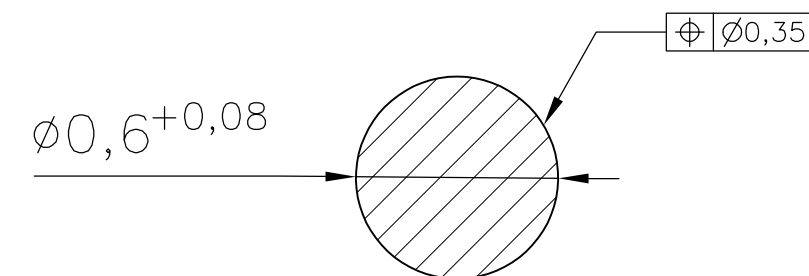


Standardausführung: V23529-Bx121-Cxxx-+  
Standardversion



Schnitt AB des Lötanschlusses  
Cross-section AB of solderpin  
(20:1)


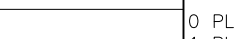


Ordercode Sachnr	Contacts	Mass/Dimension								
	Polzahl	A	B	C	D	E	F	M	N	P
..-Cx09-+	09	31,19	16,79	25,0 <sup>+0,12</sup> <sub>-0,13</sub>	8,23	12,93	2,74	7,6	2	7,72
..-Cx15-+	15	39,52	25,12	33,3 <sup>+0,15</sup> <sub>-0,1</sub>	8,23	12,93	2,74	15,2	4	7,69
..-Cx25-+	25	53,42	38,84	47,04 <sup>+0,13</sup> <sub>-0,13</sub>	8,23	12,93	2,76	26,6	7	7,65
..-Cx37-+	37	69,7	55,30	63,5 <sup>+0,13</sup> <sub>-0,13</sub>	8,23	12,93	2,76	41,8	11	7,65

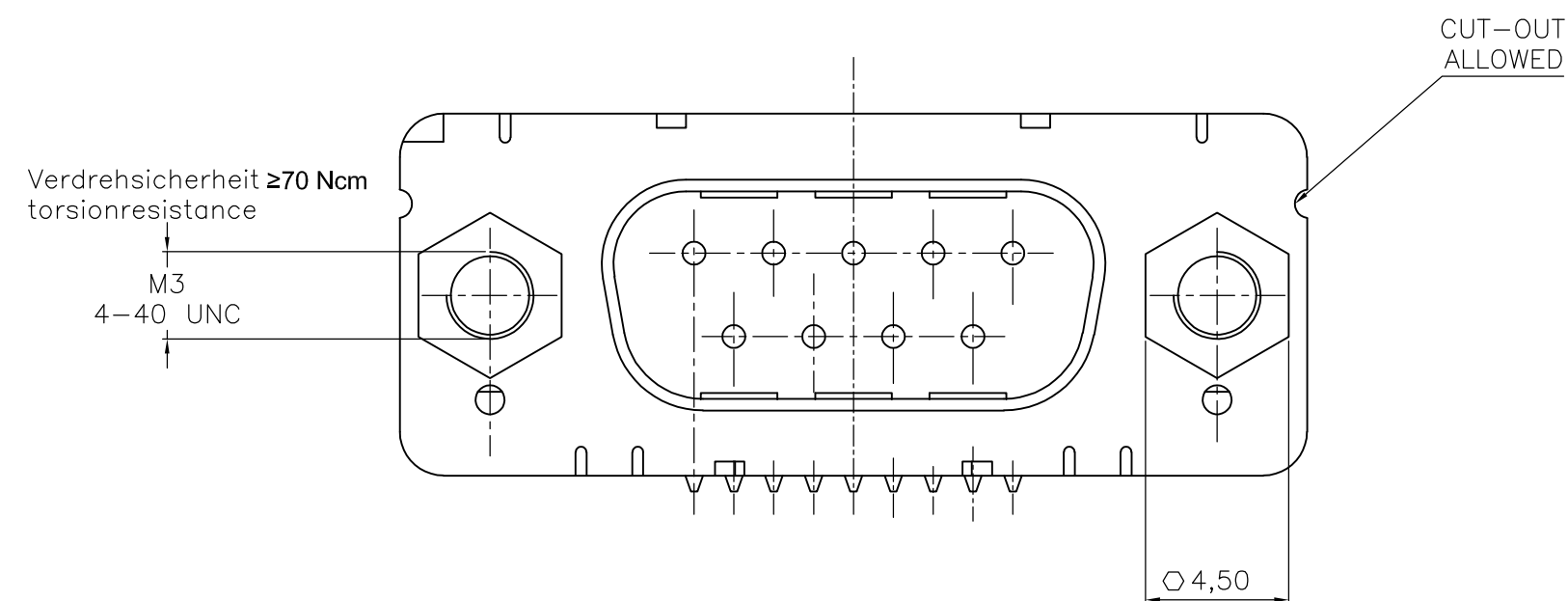
— Anforderungsstufe/Performance level <sup>1)</sup>

OLD PN: V23529-B\*\*\*\*\*C\*\*\*-\* -7427

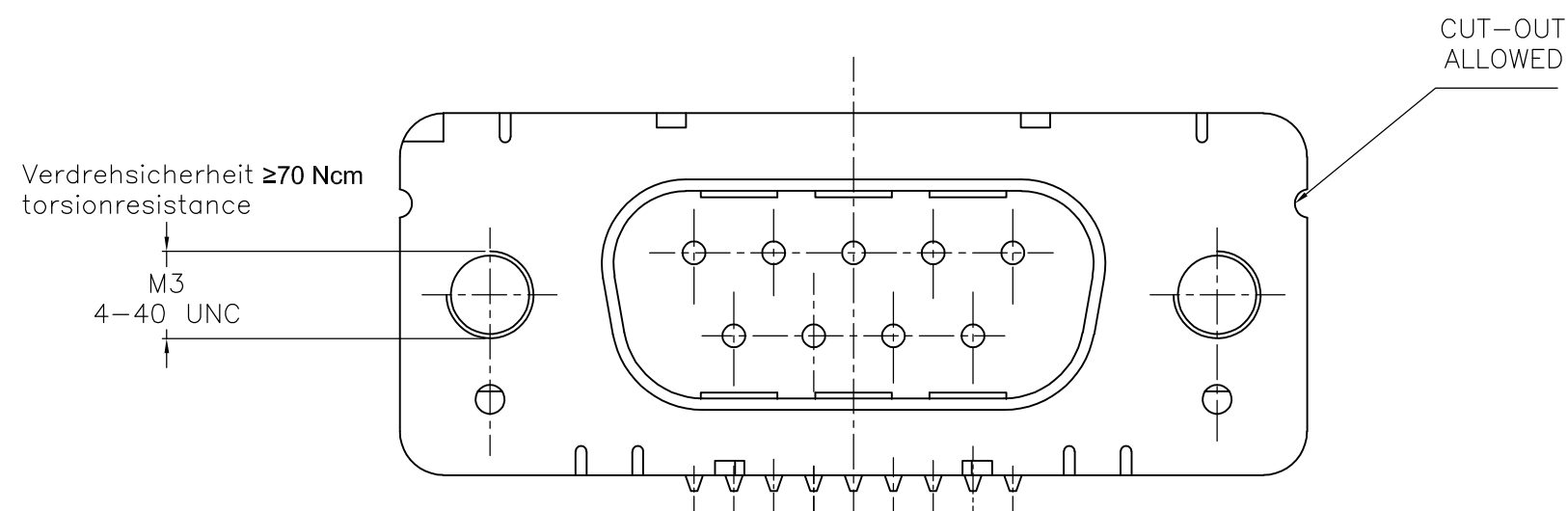
1) nach DIN 41652 T.2 und T.4  
according to DIN 41652 T.2 and T.4

THIS DRAWING IS A CONTROLLED DOCUMENT. DIMENSIONING AND TOLERANCING PER ASME Y14.5M-2009		DWN GNANI JADAV A E 07JAN10		 TE Connectivity							
DIMENSIONS: mm 		TOLERANCES UNLESS OTHERWISE SPECIFIED: 0 PLC ± - 1 PLC ± - 3 PLC ± - 4 PLC ± - ANGLES ± -				NAME Sub-D 90° Lötanschluss Stifteleiste Einbauhöhe 3,6 mm D-Sub 90° solder version Pin connector mounting height 3,6 mm					
MATERIAL -		FINISH -		SIZE A2		CAGE CODE 00779		DRAWING NO C-2-1393480-1		RESTRICTED TO -	
CUSTOMER DRAWING						SCALE 2:1		SHEET 1 OF 6		REV G	

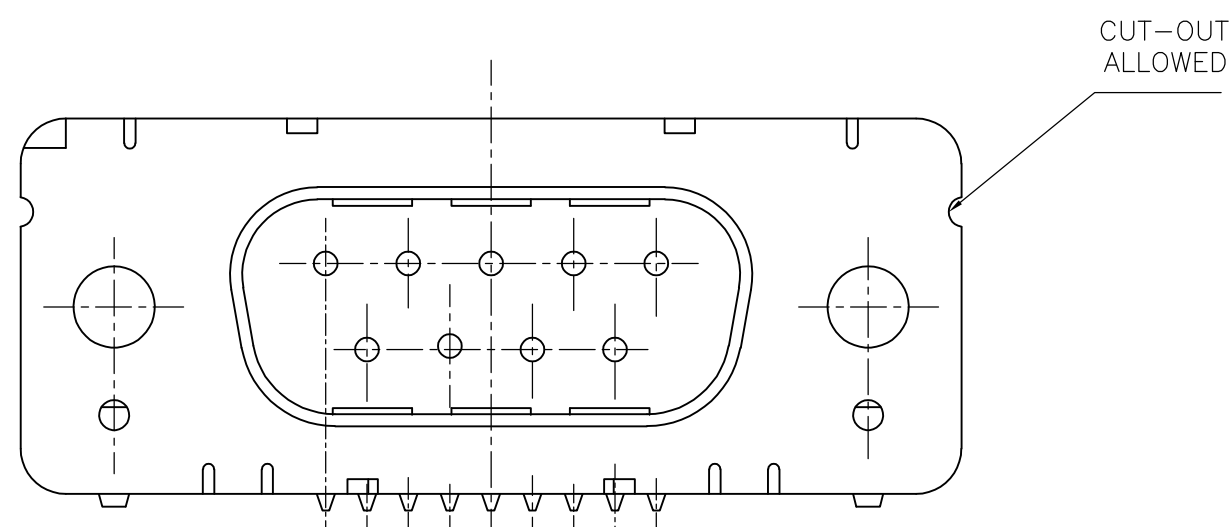
mit Gewindebolzen: M3 V23529-Bxx24-Cxxx-+  
with thread lock 4-40 UNC V23529-Bxx25-Cxxx-+



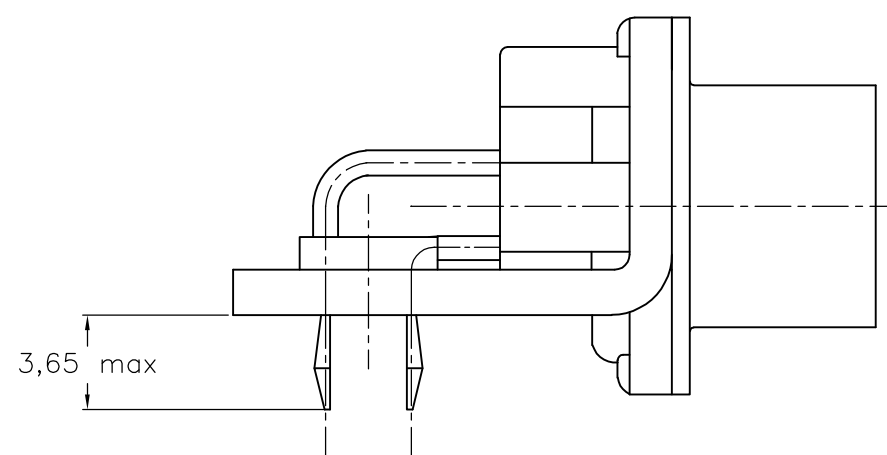
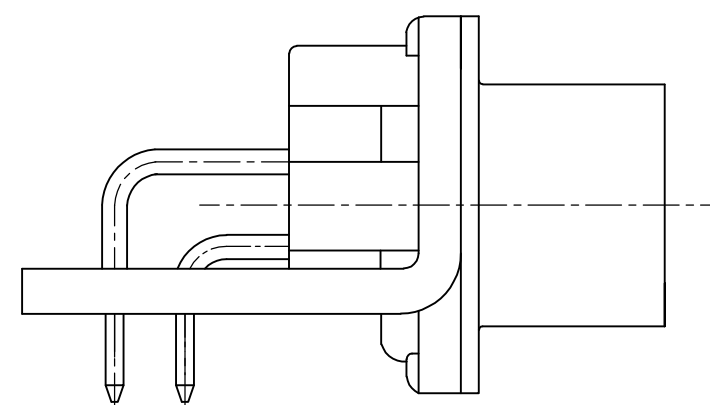
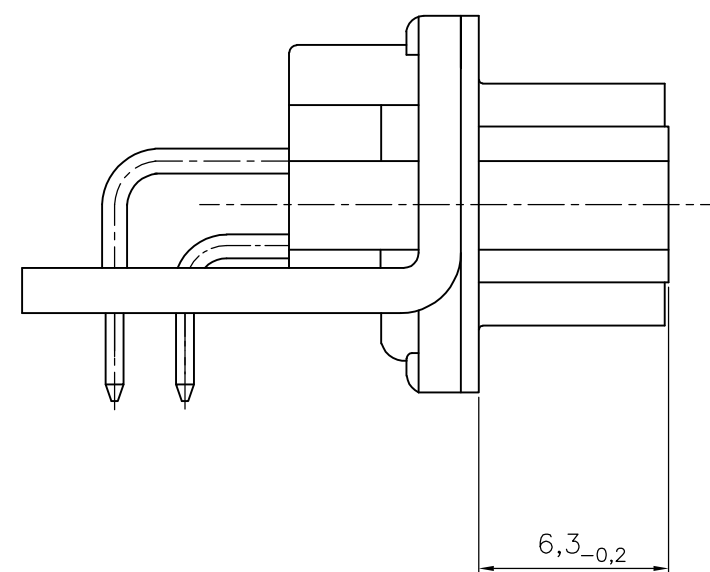
mit Gewinde: M3            V23529-Bxx22-Cxxx-+  
with thread 4-40 UNC    V23529-Bxx23-Cxxx-+



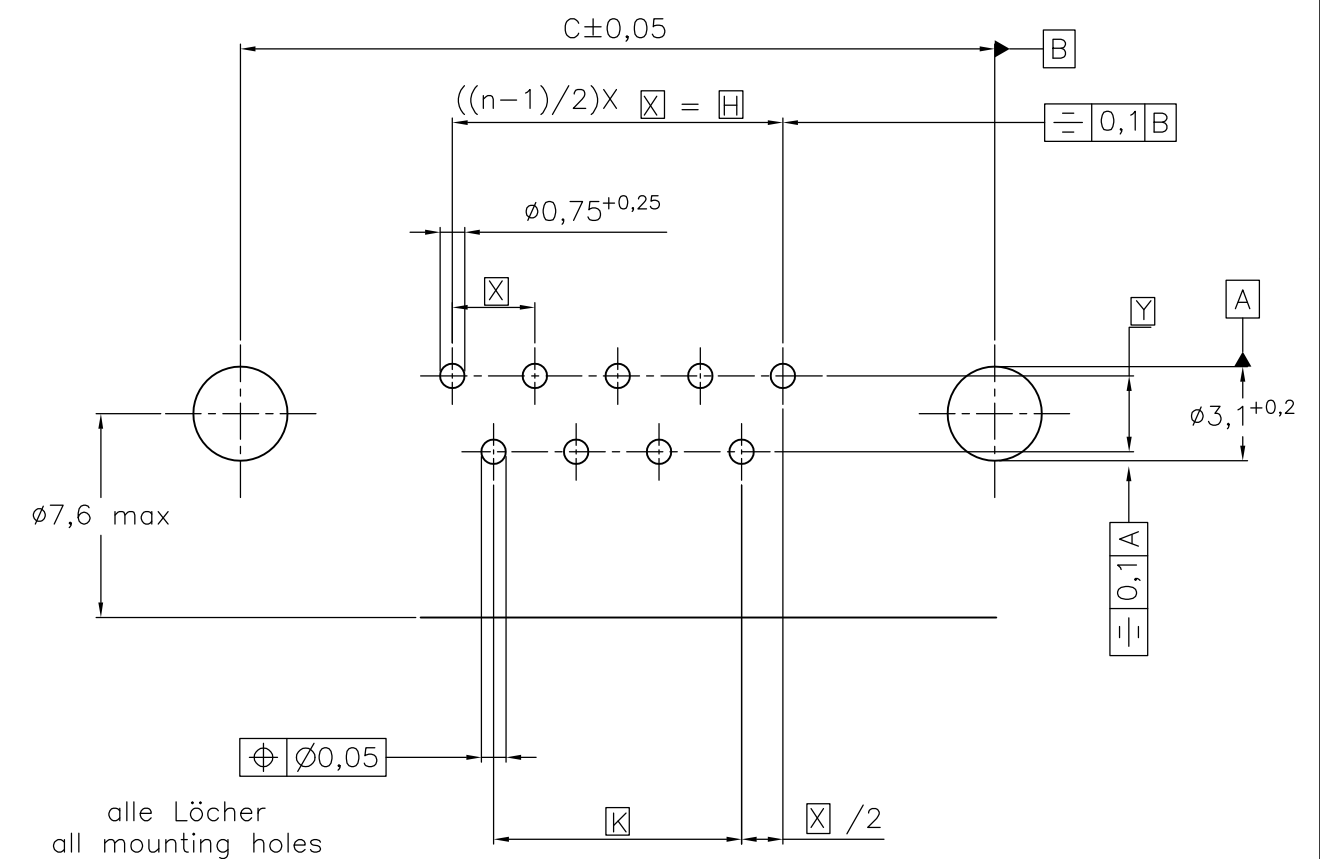
mit Clipbefestigung: V23529-Bx22x-Cxxx-+  
with snap-in



LP-Dicke  $1,6 \pm 0,13 \text{ mm}$ , Loch  $\varnothing 3,1^{+0,2}$   
PC-board-thickness  $1,6 \pm 0,13 \text{ mm}$ , Hole  $\varnothing 3,1^{+0,2}$





Leiterplattenbohrung  
PCB hole pattern



Mass Dimension	Polzahl n			
	Number of contacts n			
	9	15	25	37
C	25	33,3	47,04	63,5
H	10,96	19,18	33,12	49,68
K	8,22	16,44	30,36	46,92
X	2,74	2,74	2,76	2,76
Y	2,54			

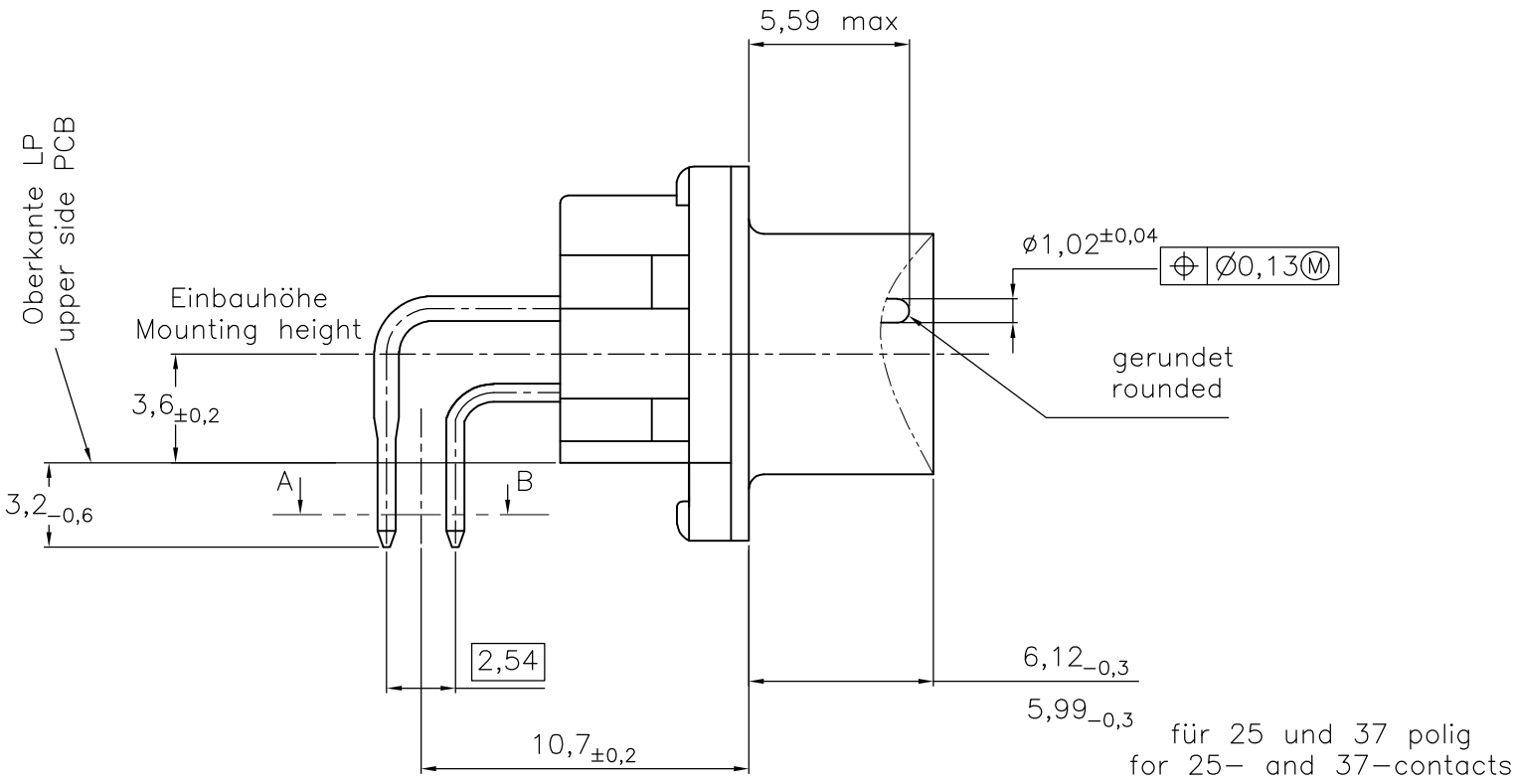
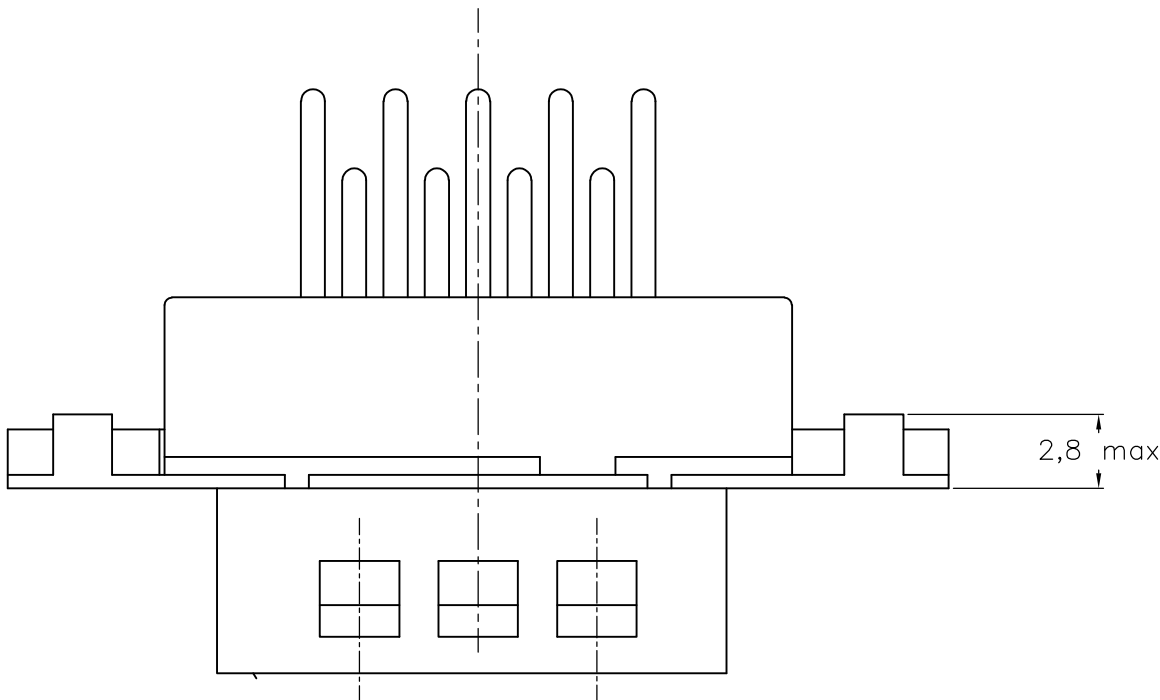
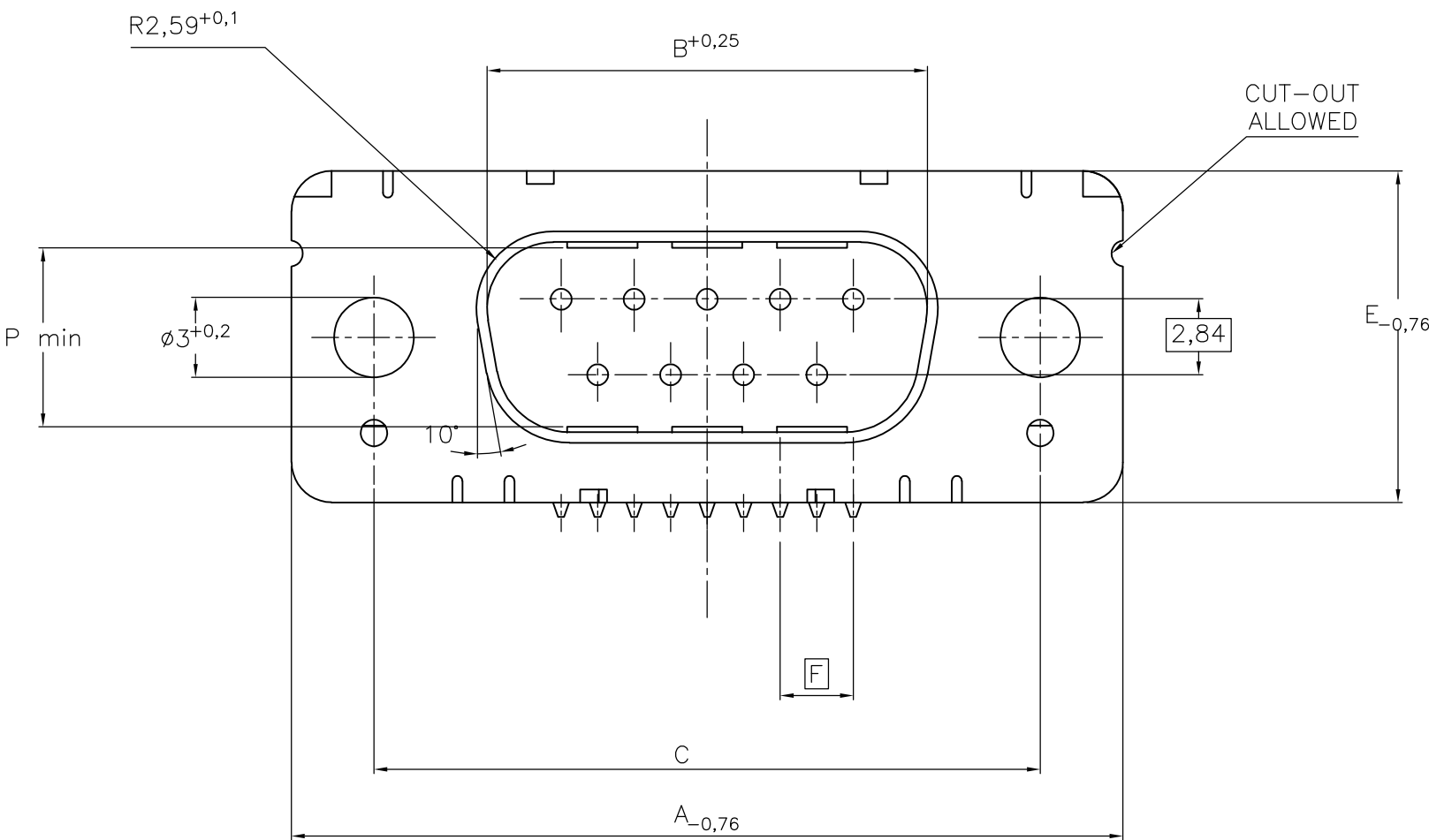
1) nach DIN 41652 T,2 UND T,4  
according to DIN 41652 p,2 AND p,4

OLD PN: V23529-B\*\*\*\*-C\*\*\*-\* -7427

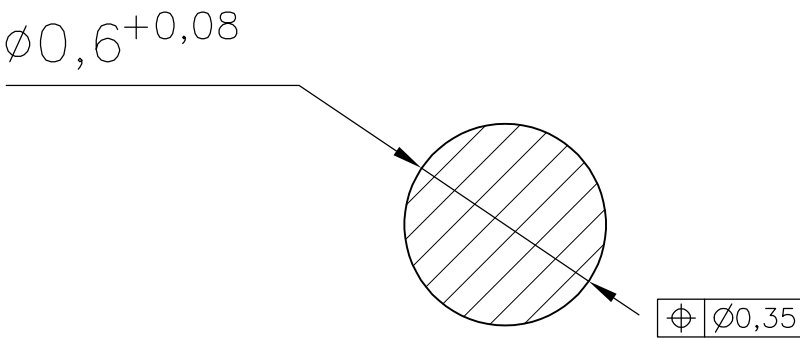
THIS DRAWING IS A CONTROLLED DOCUMENT. DIMENSIONING AND TOLERANCING PER ASME Y14.5M-2009		DWN 07JAN10 GNANI JADAV A E CHK -		 TE Connectivity	
DIMENSIONS: mm		TOLERANCES UNLESS OTHERWISE SPECIFIED: 0 PLC ± - 1 PLC ± - 2 PLC ± - 3 PLC ± - 4 PLC ± - ANGLES ± -		NAME Sub-D 90° Lötanschluss Stifteleiste Einbauhöhe 3,6 mm D-Sub 90° solder version Pin connector mounting height 3,6 mm	
		PRODUCT SPEC - APPLICATION SPEC -		SIZE A2	
MATERIAL -		WEIGHT -		CAGE CODE 00779	
FINISH -		CUSTOMER DRAWING		DRAWING NO C=2-1393480-1	
				RESTRICTED TO -	
				SCALE 2:1 SHEET 2 of 6 REV G	

REVISIONS					
P	LTR	DESCRIPTION	DATE	DWN	APVD
	—	SEE SHEET 1	—	—	—

Standardausführung ohne Winkel: V23529-B50x1-Cxxx-+  
Standardversion without bracket



Schnitt AB des Lötanschlusses  
Cross-section AB of solderpin  
(20:1)



Ordercode Sachnr	Contacts Polzahl	Mass/Dimension								
		A	B	C	D	E	F	M	N	P
..-Cx09-+	09	31,19	16,79	25,0 <sup>+0,12</sup> <sub>-0,13</sub>	8,23	12,93	2,74	7,6	2	7,72
..-Cx15-+	15	39,52	25,12	33,3 <sup>+0,15</sup> <sub>-0,13</sub>	8,23	12,93	2,74	15,2	4	7,69
..-Cx25-+	25	53,42	38,84	47,04 <sup>+0,13</sup> <sub>-0,13</sub>	8,23	12,93	2,76	26,6	7	7,65
..-Cx37-+	37	69,7	55,30	63,5 <sup>+0,13</sup> <sub>-0,13</sub>	8,23	12,93	2,76	41,8	11	7,65

Anforderungsstufe/Performance level 1)  
OLD PN: V23529-B\*\*\*\*-C\*\*\*-\*—7427

1) nach DIN 41652 T.2 und T.4  
according to DIN 41652 T.2 and T.4

THIS DRAWING IS A CONTROLLED DOCUMENT.  
DIMENSIONING AND TOLERANCING PER ASME Y14.5M-2009

DIMENSIONS:  
mm

MATERIAL  
—

TOLERANCES UNLESS OTHERWISE SPECIFIED:

0 PLC ± —  
1 PLC ± —  
2 PLC ± —  
3 PLC ± —  
4 PLC ± —  
ANGLES ± —  
FINISH —

DWN  
GNANI JADAV A E  
CHK  
K.MALCZYK  
APVD  
K.MALCZYK  
PRODUCT SPEC  
—  
APPLICATION SPEC  
—  
WEIGHT  
—

07JAN10  
—  
—  
—  
—  
—  
—

CUSTOMER DRAWING

TE Connectivity

Sub-D 90° Lötanschluss Stifteleiste  
Einbauhöhe 3,6 mm  
D-Sub 90°solder version Pin connector  
mounting height 3,6 mm

SIZE  
A2

CAGE CODE  
00779



DRAWING NO  
C=2-1393480-1

RESTRICTED TO  
—

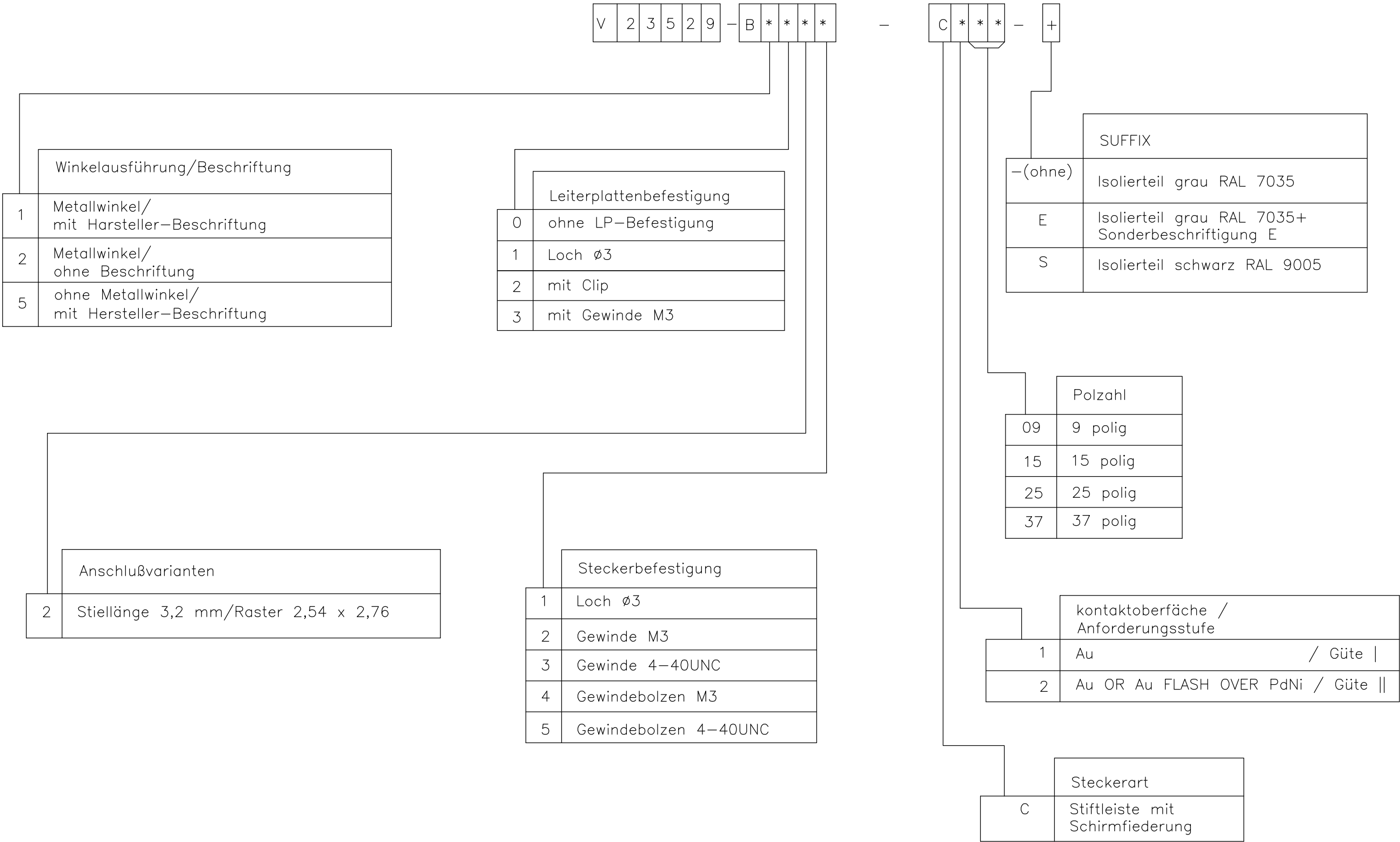
SCALE  
2:1

SHEET  
3 of 6

REV  
G

THIS DRAWING IS A CONTROLLED DOCUMENT. DIMENSIONING AND TOLERANCING PER ASME Y14.5M-2009		DWN GNANI JADAV A E CHK K.MALCZYK		07JAN10 —		 TE Connectivity	
DIMENSIONS: mm		TOLERANCES UNLESS OTHERWISE SPECIFIED:		NAME		Sub-D 90° Lötanschluss Stifteleiste	
		APVD K.MALCZYK		—		Einbauhöhe 3,6 mm	
		PRODUCT SPEC —		—		D-Sub 90° solder version Pinconnector	
		APPLICATION SPEC —		—		mounting height 3,6 mm	
MATERIAL —		FINISH —		SIZE A2		CAGE CODE 00779	DRAWING NO C-2-1393480-1
				RESTRICTED TO —			
CUSTOMER DRAWING				SCALE 2:1		SHEET 4 of 6	
				REV G			

REVISIONS					
P	LTR	DESCRIPTION	DATE	DWN	APVD
	—	SEE SHEET 1	—	—	—



1) nach DIN 41652 T.2 und T.4  
according to DIN 41652 p.2 and p.4

OLD PN: V23529-B\*\*\*\*-C\*\*\*-\*-7427

THIS DRAWING IS A CONTROLLED DOCUMENT. DIMENSIONING AND TOLERANCING PER ASME Y14.5M-2009		DWN GNANI JADAV A E 07JAN10	<div><div>TE</div>TE Connectivity</div>			
DIMENSIONS: mm		CHK K.MALCZYK	NAME Sub-D 90° Löt Ausführung Stiftleiste Einbauhöhe 3,6 mm D-Sub 90° solder version Pin connector mounting height 3,6 mm			
<div><div><div></div></div></div>		APVD K.MALCZYK				
TOLERANCES UNLESS OTHERWISE SPECIFIED: 0 PLC ± - 1 PLC ± - 2 PLC ± - 3 PLC ± - 4 PLC ± - ANGLES ± -		PRODUCT SPEC —	SIZE A2			
MATERIAL —		APPLICATION SPEC —	CAGE CODE 00779			
FINISH —		WEIGHT —	DRAWING NO C=2-1393480-1			
CUSTOMER DRAWING			SCALE 2:1	SHEET 5 of 6	REV G	RESTRICTED TO —

REVISIONS					
P	LTR	DESCRIPTION	DATE	DWN	APVD
	-	SEE SHEET 1	-	-	-

D

D

C

C

B

B

A

A

Active part numbers. Contact TE CONNECTIVITY for other configuration availability

Old Part Number	TE CONNECTIVITY Part Number
V23529-B1121-C209	2-1393480-1
V23529-B1121-C215	2-1393480-2
V23529-B1121-C225	2-1393480-3
V23529-B1121-C237	2-1393480-4
V23529-B1122-C209	3-1393480-2
V23529-B1122-C215	3-1393480-3
V23529-B1122-C225	2-1392010-8
V23529-B1122-C237	3-1392010-6
V23529-B1123-C209	4-1393480-0
V23529-B1123-C215	4-1393480-1
V23529-B1123-C225	4-1393480-2
V23529-B1123-C237	4-1393480-3
V23529-B1125-C125	5-1393480-1
V23529-B1125-C209	5-1393480-2
V23529-B1125-C215	5-1393480-3
V23529-B1125-C225	5-1393480-4
V23529-B1125-C237	3-1392010-5
V23529-B1221-C109	5-1393480-8
V23529-B1221-C209	5-1393480-9

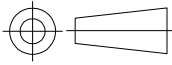
Old Part Number	TE CONNECTIVITY Part Number
V23529-B1221-C215	6-1393480-0
V23529-B1222-C209	7-1393480-4
V23529-B1222-C215	7-1393480-5
V23529-B1222-C225	7-1393480-6
V23529-B1222-C237	7-1393480-7
V23529-B1223-C209	8-1393480-5
V23529-B1223-C215	8-1393480-6
V23529-B1223-C225	8-1393480-7
V23529-B1223-C237	8-1393480-8
V23529-B1224-C209	9-1393480-4
V23529-B1224-C215	9-1393480-5
V23529-B1224-C225	9-1393480-6
V23529-B1225-C109	1393481-4
V23529-B1225-C209	1393481-5
V23529-B1225-C215	3-1392010-3
V23529-B1225-C225	1393481-6
V23529-B1225-C237	3-1392010-4
V23529-B2121-C209	1-1393481-0
V23529-B2221-C209	1-1393481-2

OBSOLETE  
OBSOLETE  
OBSOLETE  
OBSOLETE

2173194-1 OBSOLETE

1) nach DIN 41652 T.2 und T.4  
according to DIN 41652 p.2 and p.4

OLD PN: V23529-B\*\*\*\*-C\*\*\*\*-\*-7427

THIS DRAWING IS A CONTROLLED DOCUMENT. DIMENSIONING AND TOLERANCING PER ASME Y14.5M-2009		DWN 07JAN10 GNANI JADAV A E		TE Connectivity			
DIMENSIONS: mm		CHK K.MALCZYK		NAME			
		APVD K.MALCZYK		Sub-D 90° Lötanschluss Stifteleiste Einbauhöhe 3,6 mm D-Sub 90° solder version Pin connector mounting height 3,6 mm			
		PRODUCT SPEC					
		APPLICATION SPEC					
		WEIGHT -					
MATERIAL -	TOLERANCES UNLESS OTHERWISE SPECIFIED: 0 PLC ± - 1 PLC ± - 2 PLC ± - 3 PLC ± - 4 PLC ± - ANGLES ± - FINISH -	CUSTOMER DRAWING		SIZE A2	CAGE CODE 00779	DRAWING NO. C=2-1393480-1	RESTRICTED TO -
				SCALE 2:1	SHEET 6 of 6	REV G	

2-1393480-1

# Mouser Electronics

Authorized Distributor

Click to View Pricing, Inventory, Delivery & Lifecycle Information:

[TE Connectivity:](#)

[1-1393481-2](#)