

## M5100 Heavy Industrial Pressure Transducer



- CE Compliance
- Wide Temperature Range
- Compact
- Variety of Pressure Ports and Electrical Configurations

### DESCRIPTION

The M5100 series pressure transducers from the Microfused™ line of MEAS, set a new price performance standard for demanding commercial and heavy industrial applications. This series is suitable for measurement of liquid or gas pressure, even for difficult media such as contaminated water, steam, and mildly corrosive fluids.

The transducer pressure cavity is machined from a solid piece of 17-4 PH stainless steel. The standard version includes a 1/4 NPT pipe thread allowing a leak-proof, all metal sealed system. There are no O-rings, welds or organics exposed to the pressure media. The durability is excellent. The M5100 exceeds the latest heavy industrial CE requirements including surge protection, and is over voltage protected to 16Vdc in both positive and reverse polarity.

This product is geared to the OEM customer who uses medium to high volumes. The standard version is suitable for many applications, but the dedicated design team at our Transducer Engineering Center stands ready to provide a semi-custom design where the volume and application warrants.

### FEATURES

- Heavy Industrial CE Approval
- 100 V/m EMI Protection
- Reverse Polarity Protection
- Extended Temperature Range
- 1% Total Error Band
- Compact Outline
- -40°C to +125°C Operating Temperature Range

### APPLICATIONS

- Advanced HVAC Systems
- Refrigeration Systems
- Automotive Test Stands
- Industrial Process Control
- Pumps and Compressors
- Hydraulic/Pneumatic Systems
- Agriculture Equipment
- Energy Generation and Management

# M5100 Heavy Industrial Pressure Transducer

## STANDARD RANGES

Range	psig	Range	Barg
0 to 50	•	0 to 3.5	•
0 to 100	•	0 to 7	•
0 to 200	•	0 to 14	•
0 to 300	•	0 to 20	•
0 to 500	•	0 to 35	•
0 to 1k	•	0 to 70	•
0 to 3k	•	0 to 200	•
0 to 5k	•	0 to 350	•
0 to 10k	•	0 to 700	•

DIN Range	Barg
0 to 4	•
0 to 6	•
0 to 10	•
0 to 16	•
0 to 25	•
0 to 40	•
0 to 60	•
0 to 100	•
0 to 160	•
0 to 250	•
0 to 400	•
0 to 600	•
0 to 1000	•

\*Intermediate ranges available upon request.

CONNECTION/ PRESSURE RANGE/ PRESSURE REF				
			PRESSURE RANGE	
			PG/BG PRESS REF	
			<500 PSI	>500 PSI
CODE	CONNECTION		<040BAR	> 040BAR
1	CABLE 2 FEET ALPHA#3243,18AWG	DIM A	1.71 [ 43.5 ]	1.92 [ 48.6 ]
		DIM B	2.17 [ 55.2 ]	2.38 [ 60.5 ]
4	PACKARD CONNECTOR SUPPLY ON PIN A	DIM A	1.71 [ 43.4 ]	1.92 [ 48.6 ]
		DIM B	2.53 [ 64.3 ]	2.72 [ 69.1 ]
5	BENDIX PTIH-10-6P CONNECTOR	DIM A	1.74 [ 44.2 ]	1.93 [ 49.0 ]
		DIM B	2.17 [ 55.0 ]	2.36 [ 59.8 ]
6	HIRSCHMANN CONNECTOR DIN 43650 FORM C	DIM A	1.67 [ 42.3 ]	1.86 [ 47.1 ]
		DIM B	2.12 [ 53.8 ]	2.31 [ 58.6 ]
7	HIRSCHMANN CONNECTOR DIN 43650 FORM A	DIM A	2.12 [ 53.8 ]	2.12 [ 53.8 ]
		DIM B	2.64 [ 67.1 ]	2.64 [ 67.1 ]
9	PACKARD CONNECTOR SUPPLY ON PIN B	DIM A	1.71 [ 43.5 ]	1.92 [ 48.8 ]
		DIM B	2.53 [ 64.3 ]	2.72 [ 69.1 ]
D	M12 CONNECTOR	DIM A	1.69 [ 42.9 ]	1.90 [ 48.3 ]
		DIM B	2.21 [ 56.1 ]	2.41 [ 61.2 ]
M	CABLE 1 METER MANHATTAN#M39114,22AWG	DIM A	1.71 [ 43.5 ]	1.92 [ 48.6 ]
		DIM B	2.17 [ 55.2 ]	2.38 [ 60.5 ]
P	CABLE 5 METER MANHATTAN#M39114,22AWG	DIM A	1.71 [ 43.5 ]	1.92 [ 48.6 ]
		DIM B	2.17 [ 55.2 ]	2.38 [ 60.5 ]
R	CABLE 10 METER MANHATTAN#M39114,22AWG	DIM A	1.71 [ 43.5 ]	1.92 [ 48.6 ]
		DIM B	2.17 [ 55.2 ]	2.38 [ 60.5 ]

PRESSURE PORT		
CODE	PORT	DIM C
2	1/4-19 BSPP	0.47 [11.94]
4	7/16-20UNF MALE SAE J514 STRAIGHT THREAD BOSSE O-RING BUNA-N 70SH -904 ID8.92mm X W1.83mm	0.45 MAX [11.43]
5	1/4-18 NPT	0.65 MAX [16.51]
F	1/4-19 BSPP FEMALE	0.70 [17.78]
P	7/16-20UNF FEMALE SAE J514 STRAIGHT THREAD BOSS WITH INTEGRAL VALVE DEPRESSOR	0.43 [10.92]
Q	M10 X 1.0 mm	0.42 [10.67]
S	M12 X 1.5 mm	0.53 [13.46]
U	G1/4 DIN 3852 FORM E GASKET DIN3869-14 NBR	0.47 [12.00]

# M5100 Heavy Industrial Pressure Transducer

## PERFORMANCE SPECIFICATIONS

Ambient Temperature: 25°C (unless otherwise specified)

PARAMETERS	MIN	TYP	MAX	UNITS	NOTES
Accuracy (combined non linearity, hysteresis, and repeatability)	-0.25		0.25	%F.S.	1
Isolation, Body to any Lead	1			MΩ @ 25Vdc	
Pressure Cycles (Zero to Full Scale)	1.00E+7			FS Cycles	
Proof Pressure	2X			Rated	
Burst Pressure	5X			Rated	
Long Term Stability (1 year)	-0.25		0.25	%Span	
Total Error Band	-1.0		1.0	%F.S.	2
Compensated Temperature	-20		+85	°C	
Operating Temperature	-40		+125	°C	3
Storage Temperature	-40		+125	°C	3
Load Resistance (R <sub>L</sub> )	R <sub>L</sub> > 100k				4
Bandwidth	DC to 1KHz (Typical)				
Shock	50g, 11msec Half Sine Shock per MIL-STD-202G, Method 213B, Condition A				
Vibration	±20g, MIL-STD-810C, Procedure 514.2, Fig 514.2-2, Curve L				

For custom configurations, consult factory.

### Notes

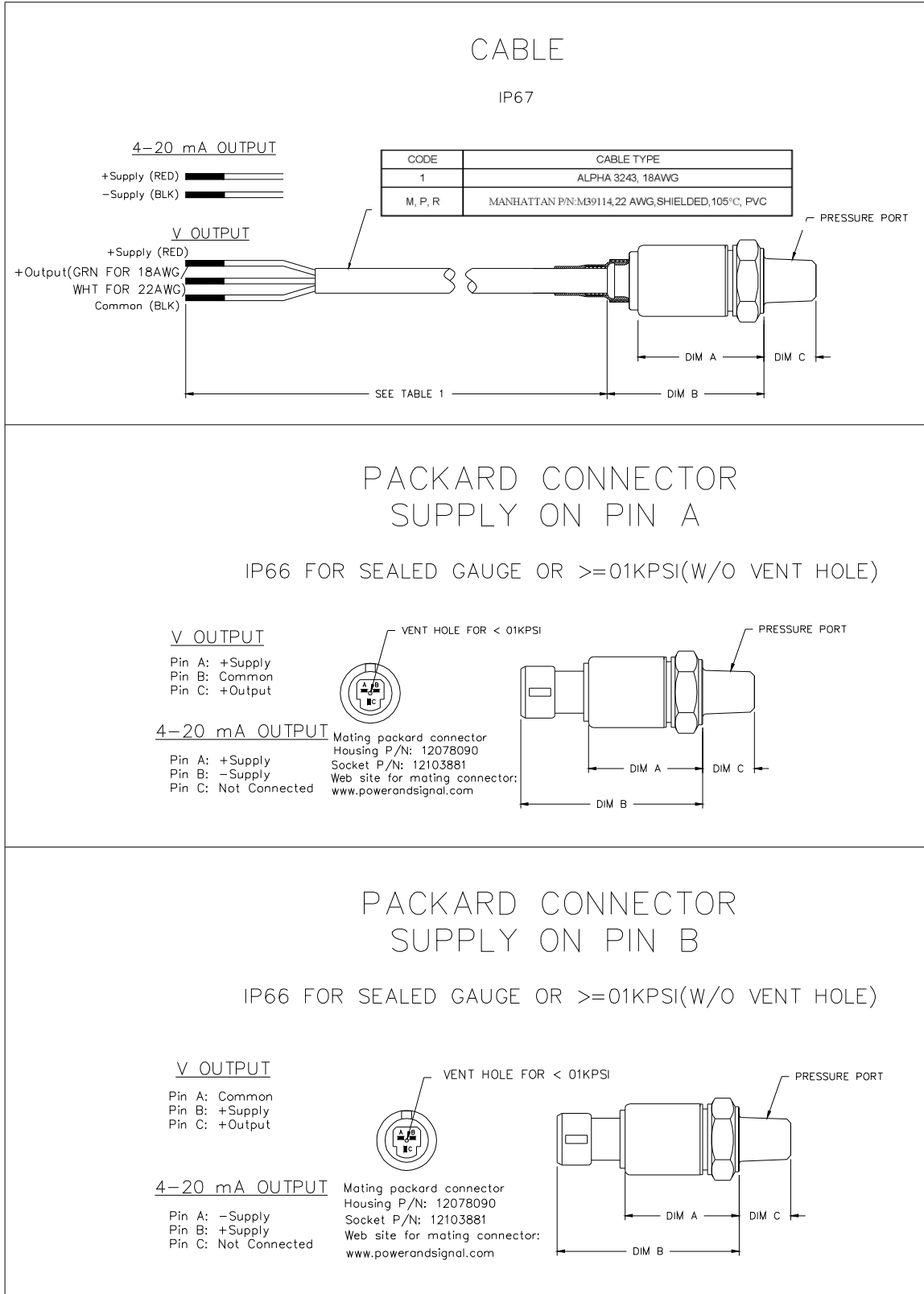
1. Best fit straight line at 25°C.
2. TEB includes all accuracy errors, thermal errors, span and zero tolerances.
3. Cable 105°C max.
4. Voltage output.

### CE Compliance

IEC 55022 Emissions Class A & B  
 IEC 61000-4-2 Electrostatic Discharge Immunity (6kV contact/8kV air)  
 IEC 61000-4-3 Electromagnetic Field Immunity (30V/m)  
 IEC 61000-4-4 Electrical Fast Transient Immunity (1kV)  
 IEC 61000-4-5 Surge Immunity (1kV)  
 IEC 61000-4-6 Conducted RF Immunity (10V)  
 IEC 61000-4-9 Magnetic Field Immunity (100A/m)

# M5100 Heavy Industrial Pressure Transducer

## DIMENSIONS



# M5100 Heavy Industrial Pressure Transducer

## BENDIX PTIH-10-6P CONNECTOR

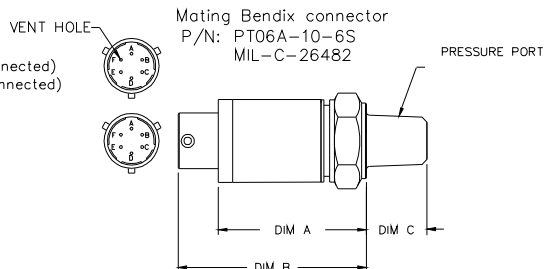
IP66 FOR SEALED GAUGE OR  $\geq 01\text{KPSI}$ (W/O VENT HOLE)

### 4-20 mA OUTPUT

Positive supply Pin A and B (internally connected)  
Negative supply Pin C and D (internally connected)  
Pin E: Not Connected  
Pin F: Vent (Pulled out for  $< 01\text{KPSI}$ )

### V OUTPUT

Pin A: +Supply  
Pin B: +Output  
Pin C: Common  
Pin D: Common  
Pin E: Not Connected  
Pin F: Vent (Pulled out for  $< 01\text{KPSI}$ )



## HIRSCHMANN CONNECTOR DIN 43650 FORM C

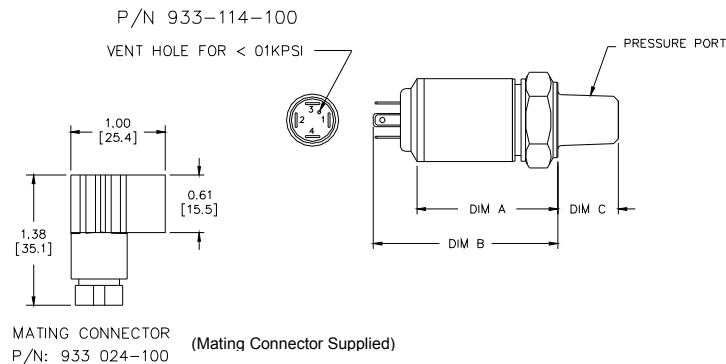
IP65 FOR SEALED GAUGE OR  $\geq 01\text{KPSI}$ (W/O VENT HOLE)

### V OUTPUT

Pin 1: +Supply  
Pin 2: +Output  
Pin 3: Common  
Pin 4: Case Ground

### 4-20 mA OUTPUT

Pin 1: +Supply  
Pin 2: -Supply  
Pin 3: Not Connected  
Pin 4: Case Ground



GASKET SUPPLIED WITH TRANSDUCER

HIRSCHMANN MATING  
CONNECTOR DIN 43650 FORM C

## HIRSCHMANN CONNECTOR DIN 43650 FORM A

P/N: 933 376-100

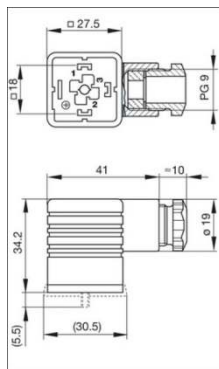
IP65 FOR SEALED GAUGE OR  $\geq 01\text{KPSI}$ (W/O VENT HOLE)

### V OUTPUT

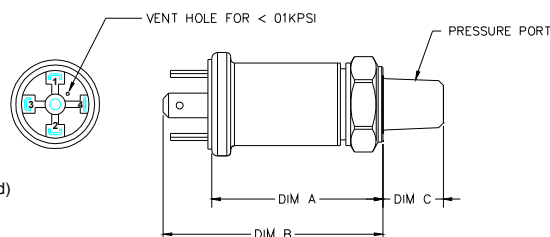
Pin 1: +Supply  
Pin 2: Common  
Pin 3: +Output  
Pin 4: Case Ground

### 4-20 mA OUTPUT

Pin 1: +Supply  
Pin 2: -Supply  
Pin 3: Not Connected  
Pin 4: Case Ground



MATING CONNECTOR  
Dim Unit: MM  
P/N: 931 969-100  
Gasket(NBR) P/N: 730 801-002  
Knurled Screw P/N: 732 574-001  
HIRSCHMANN MATING  
CONNECTOR DIN 43650 FORM A



# M5100 Heavy Industrial Pressure Transducer

## M12 CONNECTOR

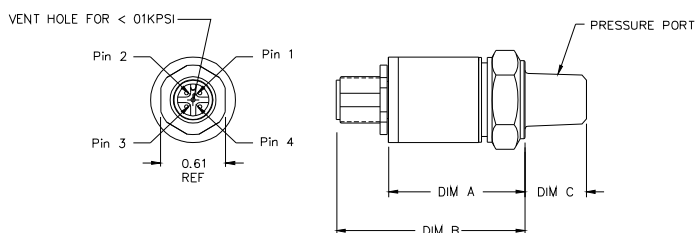
IP67 FOR SEALED GAUGE OR  $\geq 01\text{KPSI}$  (W/O VENT HOLE)

### V OUTPUT

Pin 1: +Supply  
Pin 2: +Output  
Pin 3: Common  
Pin 4: Not Connected

### 4-20 mA OUTPUT

Pin 1: +Supply  
Pin 2: Not Connected  
Pin 3: -Supply  
Pin 4: Not Connected



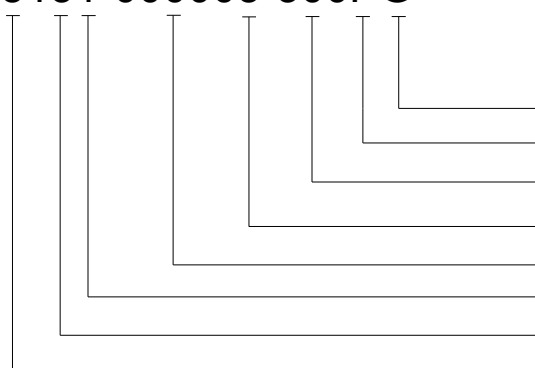
## M5100 Heavy Industrial Pressure Transducer

### OUTPUT OPTIONS

Code	Output	Supply (V)
3	0.5 – 4.5V (ratiometric)	5 ± 0.25 Ratiometric
4	1 – 5V	8 – 30
5	4 – 20mA	9 – 30
6	0 – 5V	8 – 30
7	0 – 10V	15 – 30
8	1 – 6V	8 – 30

### ORDERING INFORMATION

M5131-000005-300PG



Type (G = Gage)  
Units (P = psi, B = Bar)  
Pressure Range (See Pressure Range Table)  
Pressure Port (See Pressure Port Options Table)  
Specials (nnnnn = Custom Drawing)  
Connection (See Electrical Connections Table)  
Output (See Output Options Table)  
Model

#### NORTH AMERICA

Measurement Specialties  
45738 Northport Loop West  
Fremont, CA 94538  
Tel: 1-800-767-1888  
Fax: 1-510-498-1578  
Sales: [pfg.cs.amer@meas-spec.com](mailto:pfg.cs.amer@meas-spec.com)

#### EUROPE

Measurement Specialties  
(Europe), Ltd.  
26 Rue des Dames  
78340 Les Clayes-sous-Bois, France  
Tel: +33 (0) 130 79 33 00  
Fax: +33 (0) 134 81 03 59  
Sales: [pfg.cs.emea@meas-spec.com](mailto:pfg.cs.emea@meas-spec.com)

#### ASIA

Measurement Specialties  
(China), Ltd.  
No. 26 Langshan Road  
Shenzhen High-Tech Park (North)  
Nanshan District, Shenzhen 518057  
China  
Tel: +86 755 3330 5088  
Fax: +86 755 3330 5099  
Sales: [pfg.cs.asia@meas-spec.com](mailto:pfg.cs.asia@meas-spec.com)

The information in this sheet has been carefully reviewed and is believed to be accurate; however, no responsibility is assumed for inaccuracies. Furthermore, this information does not convey to the purchaser of such devices any license under the patent rights to the manufacturer. Measurement Specialties, Inc. reserves the right to make changes without further notice to any product herein. Measurement Specialties, Inc. makes no warranty, representation or guarantee regarding the suitability of its product for any particular purpose, nor does Measurement Specialties, Inc. assume any liability arising out of the application or use of any product or circuit and specifically disclaims any and all liability, including without limitation consequential or incidental damages. Typical parameters can and do vary in different applications. All operating parameters must be validated for each customer application by customer's technical experts. Measurement Specialties, Inc. does not convey any license under its patent rights nor the rights of others.

# Mouser Electronics

Authorized Distributor

Click to View Pricing, Inventory, Delivery & Lifecycle Information:

[TE Connectivity:](#)

[M5141-000005-01KPG](#)