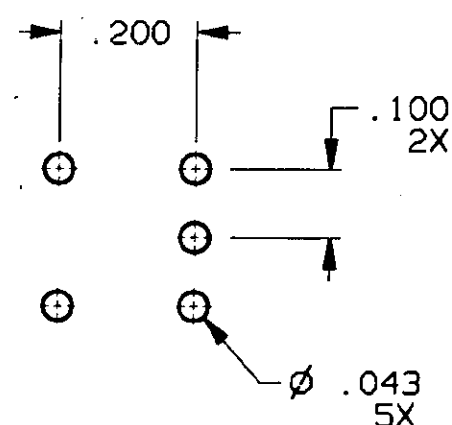
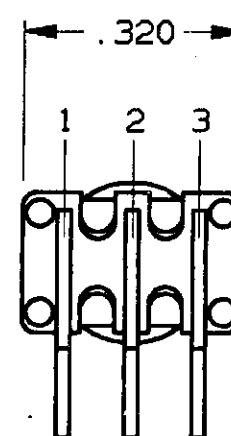
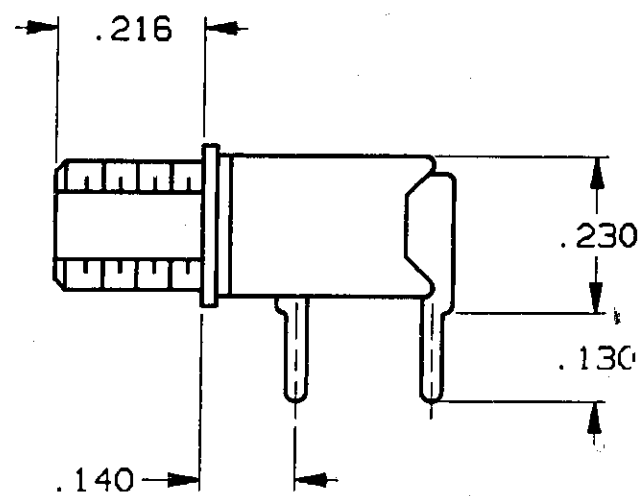
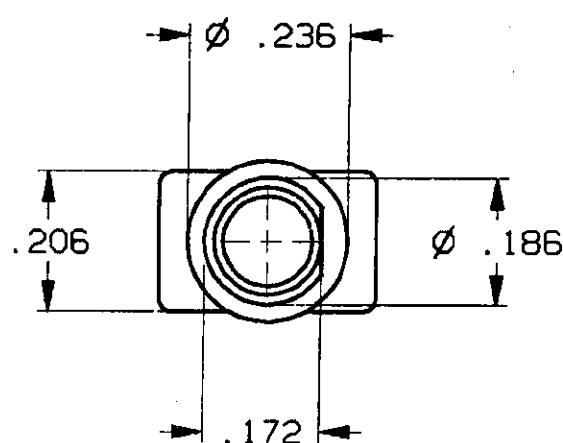
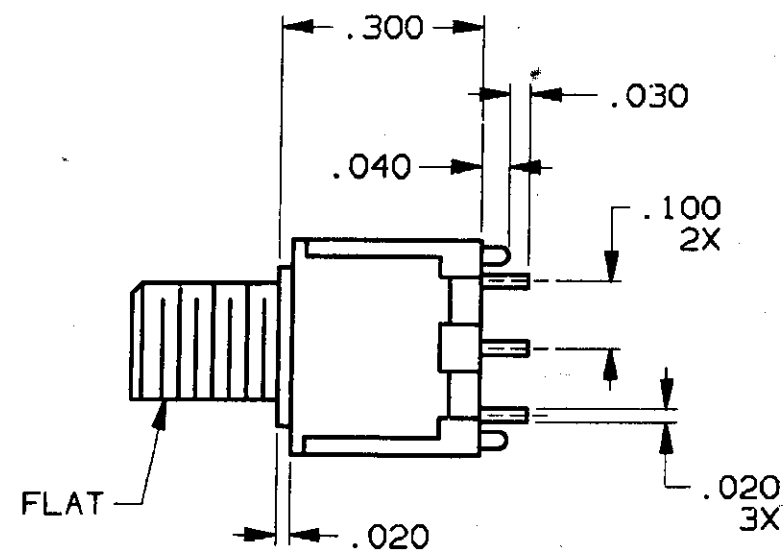


CONVERSION CHART	
INCH	MM
.002	0.05
.010	0.25
.020	0.51
.030	0.76
.040	1.02
.043	1.09
.100	2.54
.130	3.30
.140	3.56
.172	4.37
.186	4.72
.206	5.23
.216	5.49
.230	5.84
.236	5.99
.300	7.62
.320	8.13



RECOMMENDED HOLE LAYOUT

TOLERANCE $\pm .002$ UNLESS OTHERWISE NOTED

(*)	ACTUATOR BUTTON COLORS
(0)	BLACK
(2)	RED
(6)	BLUE

SPECIFICATIONS:

MATERIALS:

CASE: HIGH TEMPERATURE POLYESTER.
ACTUATOR BUTTON: POLYAMIDE, COLOR: SEE CHART BELOW.
MOVING CONTACT: COPPER ALLOY, GOLD OVER NICKEL PLATE.
FIXED CONTACT/TERMINAL: COPPER ALLOY, TIN/LEAD PLATE.
TERMINAL SEAL: EPOXY.

ELECTRICAL:

CONTACT RATING: 0.4 VA MAX. • 20 VDC OR PEAK AC.
INITIAL CONTACT RESISTANCE: 20 MILLIOHMS MAX.
INSULATION RESISTANCE: 1,000 MEGOHMS 500 VDC MIN.
DIELECTRIC STRENGTH: 1,000 VOLTS RMS • SEA LEVEL.
LIFE EXPECTANCY: 100,000 CYCLES.

MECHANICAL:

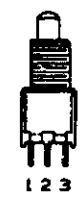

ACTUATION FORCE: 50 TO 400 GRAMS.
ACTUATION TRAVEL: .030".

ENVIRONMENTAL:

OPERATING TEMPERATURE: -22°F TO +149°F (-30°C TO +65°C).
STORAGE TEMPERATURE: -22°F TO +149°F (-30°C TO +65°C).

NOTES:

1. INTERPRET DRAWING PER ANSI Y14.5M-1982.


TERMINALS CONNECTED WHEN TOGGLE IN POSITIONS SHOWN.		
MODEL NO.		
TPBF11FG-RA-(*)	2 TO 1 (MOM)	2 TO 3
NOTE: DESIGNATION NUMBERS ARE FOR REFERENCE ONLY AND DO NOT APPEAR ON THE SWITCHES.		

CUSTOMER DRAWING SPECIFICATIONS ARE SUBJECT TO CHANGES WITHOUT NOTICE

AUGAT D/N 40312

THIS IS A C.A.D. GENERATED DRAWING. DO NOT MAKE MANUAL REVISIONS TO MASTER.



 THIRD ANGLE PROJECTION		UNLESS OTHERWISE SPECIFIED DIMENSIONS ARE IN INCHES DO NOT SCALE PRINT		ORIGINAL DATE OF DRAWING: 10-3-96	
TOLERANCES (EXCEPT AS NOTED) ANGULAR = ± DECIMAL .XX = ± DECIMAL .XXX = ±.010 DECIMAL .XXXX = ± AUGAT CONFIDENTIAL This document contains information which is the exclusive property of Augat Inc. Distribution, reproduction or use by others is not permitted without the		PROJECT:		DRAWN: S.KIRCORIAN	DATE: 10-3-96
		MATERIAL:		CHECKED:	DATE:
		SEE SPECIFICATIONS		APPROVED:	DATE:
		FINISH:		CODE IDENT. NO. 91506	DWG. SIZE C
		SEE SPECIFICATIONS		TYCO ELECTRONICS	
				TITLE: CUSTOMER DRAWING SUBMINIATURE PUSHBUTTON SWITCH (TPBF SERIES)	
				DWG. NO. 9-1437571-9	
				REV. A	

REV	A
REVISIONS	0G3C-0173-02

Mouser Electronics

Authorized Distributor

Click to View Pricing, Inventory, Delivery & Lifecycle Information:

[TE Connectivity:](#)

[TPBF11FGRA0](#) [9-1437571-9](#)